

IAIMS Annual Report

July 1995-June 1996

Overall resource usage

Type of application	# of connections		% change from	
	95-96	94-95	93-94	last year
CINAHL	3,318	-	-	-
Current Contents	5,684	6,927	10,718	-18%
Electronic mail (# messages sent)*	3,000,528	-	-	-
Health Planning & Administration	2,528	-	-	-
Medline	142,494	101,154	83,354	41%
Medical Center World Wide Web	-	-	-	-
Medical Center home page	75,491	-	-	-
Hospital home page	10,367	-	-	-
School of Medicine home page	42,306	-	-	-
Medical Library home page	47,310	-	-	-
MedInfo gopher	50,842	51,630	26,569	-2%

*Electronic mail total is an estimate based on 11 months of data.

Background information

	Hospital		Schools of Medicine & Nursing	
	1995-96	1994-95	1995-96	1994-95
Personal computers	2,200	2,200	7,500	5,673
Electronic mail users	1,000	450	4,089	1,479
Networked computers	1,575	1,100	2,500	1,000
Full-time faculty	-	-	1,270	-
Medical & graduate students	-	-	907	-
Residents & postdocs	388	-	916	-
Full-time staff	4,600	-	2,392	-
Nursing staff	1,250	-	-	-
Number of beds	900	-	-	-

NetMenu workstation usage

Type of application	Medical Library NetMenu				Hospital NetMenu				Nursing NetMenu			
	# of connections		% change from		# of connections		% change from		# of connections		% change from	
	1995-96	1994-95	1993-94	last year	1995-96	1994-95	1993-94	last year	1995-96	1994-95	1993-94	last year
Medical Education	14,131	11,135	11,022	27%	-	-	-	-	-	-	-	-
Bibliographic databases & search tools	95,027	94,268	109,342	1%	17,333	9,285	4,825	87%	3,173	2,753	1,863	15%
Full text & factual databases	5,515	5,682	5,319	-3%	19,151	7,079	1,958	171%	133	59	62	125%
Grant & research information	1,036	1,455	1,684	-29%	-	-	-	-	23	6	5	283%
Clinical assistance	713	870	901	-18%	441	426	171	4%	27	7	3	286%
Email/news/networks	164,434	91,656	65,388	79%	50,963	2,409	-	-	4,289	1,293	292	232%
Word processing & utilities	3,349	3,211	2,395	4%	10,932	295	-	-	-	-	-	-
Hospital information systems	-	-	-	-	164,049	38,474	10,909	326%	-	-	-	-
Procedure recorders	-	-	-	-	3,748	1,530	249	145%	-	-	-	-
Total	284,205	208,277	196,051	36%	266,617	59,498	18,112	348%	7,645	4,118	2,225	86%
connections per workstation	13,534	9,918	9,336	36%	4,677	1,750	1,647	167%	7,645	4,118	2,225	-

Inventory of NetMenu workstations

Location	Number of workstations		
	1995-96	1994-95	1993-94
Libraries	21	21	23
Hospital	72	41	11
Individuals	40	40	39
Total	133	102	73

Applications added to NetMenu this year

Medical Library	47 applications added, 1 removed
Hospital	11 applications added

Details for NetMenu Hospital usage

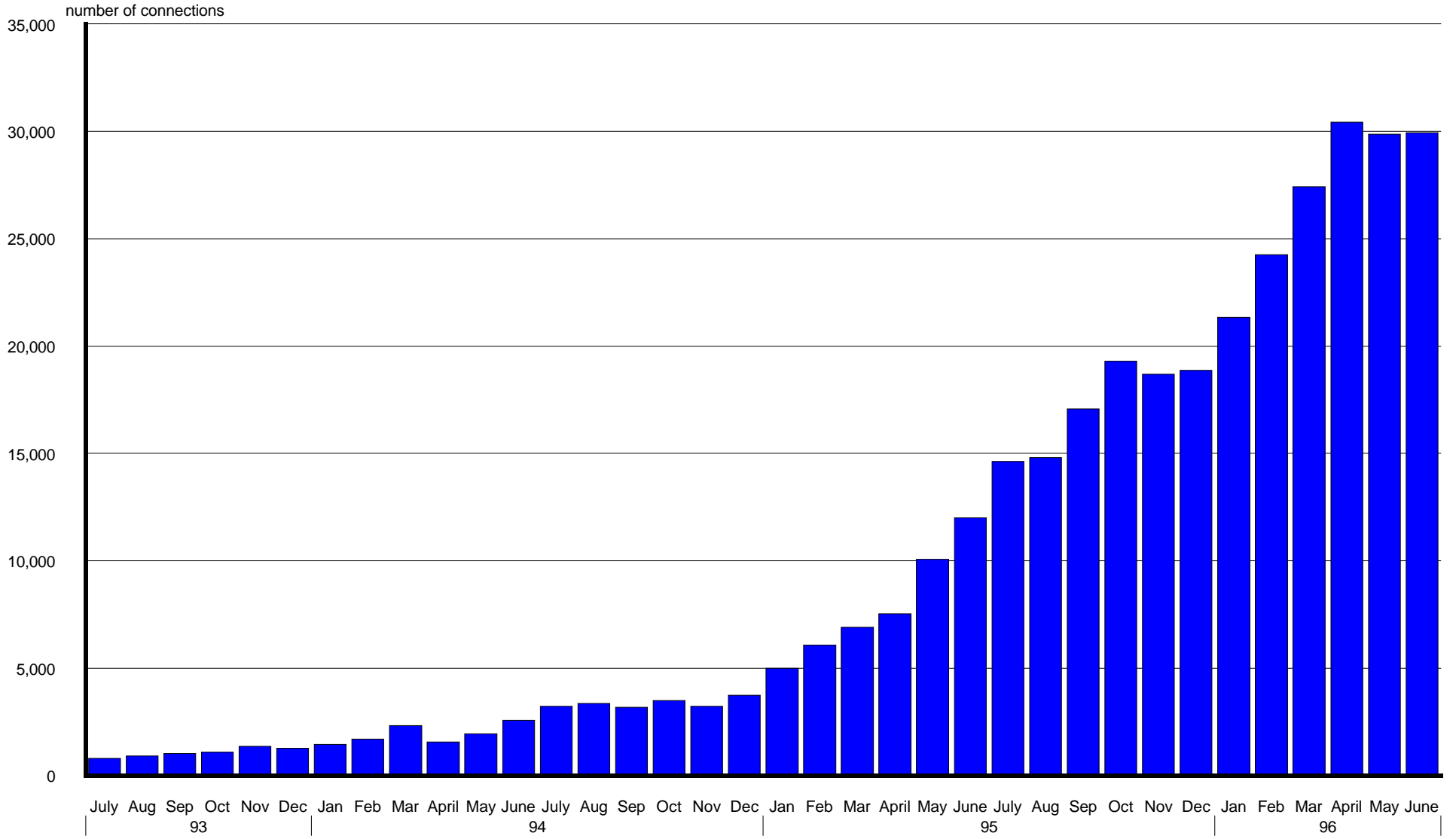
Application	total # of connections % change			
	1995-96	1994-95	1993-94	from last year
Hospital information systems	164,049	38,474	10,909	326%
CCSS	83,855	19,226	6,277	336%
ChartView (7/95)*	1,566	-	-	-
Clinical laboratory	74,613	17,866	4,372	318%
Diagnostic Imaging	1,597	202	-	691%
EPIC	1,206	3	-	40100%
Surgical Pathology	1,212	1,177	260	3%
Bibliographic databases and search tools	17,333	9,285	4,825	87%
CINAHL	1,305	593	-	120%
Health Planning and Administration	540	4	-	13400%
MEDLINE	14,299	7,991	3,670	79%
Yale Library Catalog (OPAC)	1,189	681	305	75%
Procedure recorders	3,748	1,530	249	145%
Medicine	883	792	-	11%
OB/GYN (7/95)*	1,764	-	-	-
Surgery	1,101	738	-	49%
Clinical assistance	441	426	171	4%
Coag Advisor	441	265	124	66%

* Application was added in the month shown

Application	total # of connections % change			
	1995-96	1994-95	1993-94	from last year
Full text and factual databases	19,151	7,079	1,958	171%
Comprehensive Accreditation Manual (6/96)*	21	-	-	-
Delineation of Clinical Privileges (6/96)*	30	-	-	-
Harrison's (12/95)*	2,369	-	-	-
Little Brown Handbooks	2,654	1,623	398	64%
Merck Manual	1,534	1,229	21	25%
Micromedex	7,683	4,176	1,539	84%
New England Journal of Medicine	2,071	-	-	-
Red Book on Pediatric Infections	367	51	-	620%
Rosen's Emergency Medicine (12/95)*	439	-	-	-
STAT!-Reference (12/95)*	907	-	-	-
YNHH Physician Phone Book (12/95)*	1,076	-	-	-
Email/news/networks	50,963	2,409	-	2016%
Biomed Email	7,610	1,394	-	446%
GroupWise Email (12/95)*	3,992	-	-	-
Internet access	39,361	1,015	-	3778%
Word processing & utilities	10,932	295	-	3606%
Clinical Workstation locations (12/95)*	555	-	-	-
Format disk	283	4	-	6975%
Virus scan	357	4	-	8825%
Wordperfect	9,737	287	-	3293%

NetMenu in the Hospital

Total connections



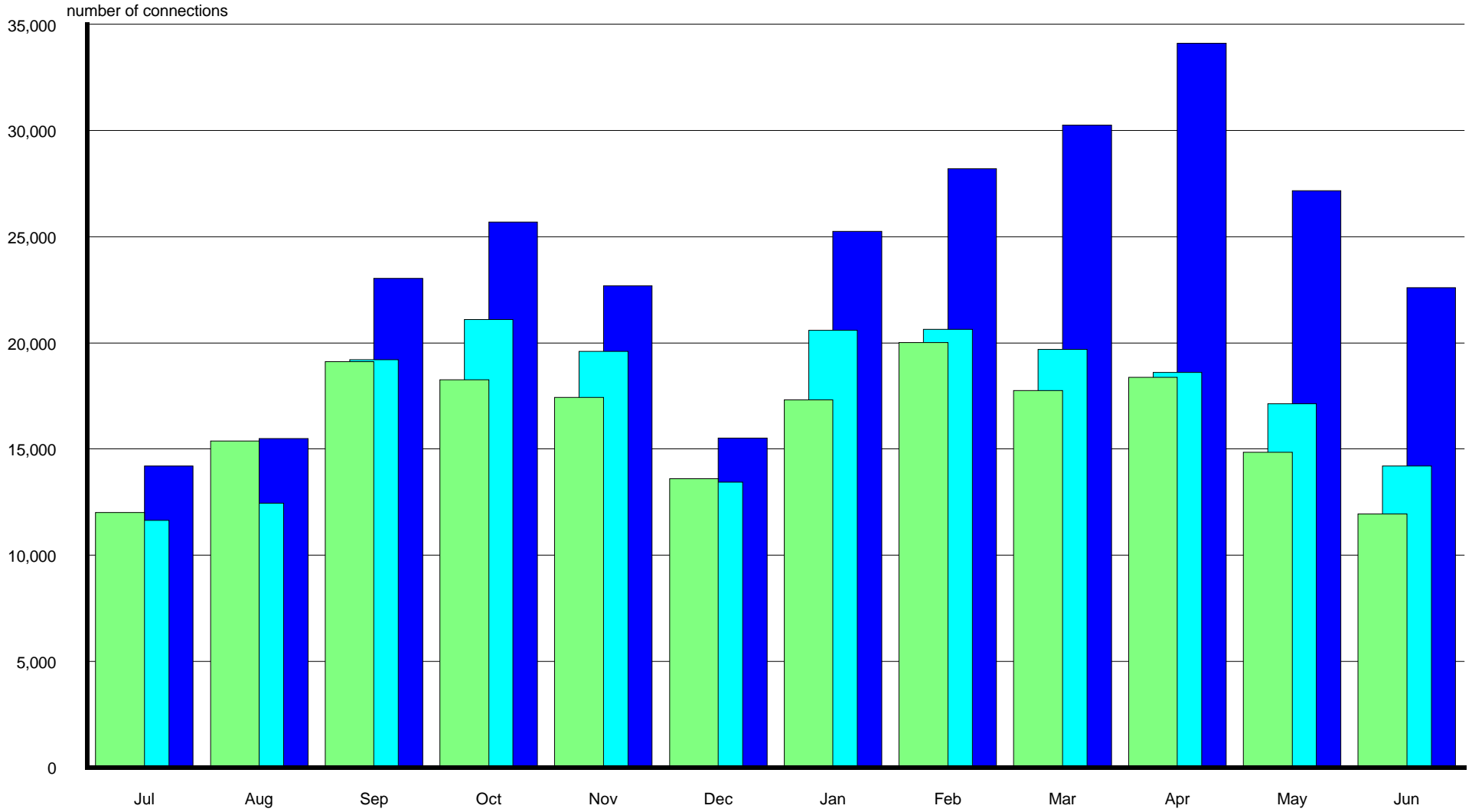
Details for NetMenu Medical Library usage

Application	total # of connections			Application	total # of connections			Application	total # of connections		
	1995-96	1994-95	% change		1995-96	1994-95	% change		1995-96	1994-95	% change
Bibliographic databases				Full text and factual databases	5,515	5,682	-3%	Medical Education	14,131	11,135	27%
and search tools	95,027	94,268	1%	AIDSTrials/AIDSdrugs/DIRLINE	103	197	-48%	Abdomen Quiz (12/95)*	497	-	-
AIDSLINE	607	1,011	-40%	American Journal of Medicine (3/96)*	46	-	-	Anatomic Explorer	769	1,099	-30%
Biosis	1,766	2,850	-38%	American Journal of Surgery (3/96)*	26	-	-	Anatomic Explorer CT	451	931	-52%
Books in Print (4/96)*	48	-	-	Annals of Internal Medicine (3/96)*	19	-	-	Animated Embryo	653	569	15%
CINAHL	715	1,026	-30%	Archives of General Psychiatry (3/96)*	21	-	-	Brainstem	334	228	46%
Current Contents	1,965	3,951	-50%	BMJ (3/96)*	28	-	-	Brainstorm	655	581	13%
ERIC (4/96)*	8	-	-	Canadian Medical Association Journal (3/96)*	4	-	-	Breath sounds	179	304	-41%
Eureka (3/96)*	33	-	-	Circulation (3/96)*	21	-	-	Cardiac Angio	107	90	19%
Expanded Academic Index	725	1,490	-51%	Encyclopaedia Britannica (4/96)*	6	-	-	Cardiac Auscultation	380	562	-32%
Health Planning and Administration	416	23	1709%	Faculty Research Interests database (6/96)*	8	-	-	Cardiac Echo	162	192	-16%
MEDLINE	56,187	53,810	4%	FREIDA	974	844	15%	Cardiac MRI	143	257	-44%
NLM Locator (3/96)*	11	-	-	GenBank	211	320	-34%	Cardiac Perfusion Imaging: SP	37	44	-16%
PsycINFO	2,332	3,216	-27%	History of Science & Technology (4/96)*	18	-	-	Cardiac Perfusion Imaging: PI	80	55	45%
Science Citation Index	2,168	2,070	5%	Journal of Biological Chemistry (1/96)*	59	-	-	Cardiothoracic Image Quiz	357	152	135%
Search term lookup	254	708	-64%	Journal of Bone & Joint Surgery (3/96)*	4	-	-	Cardiothoracic Imaging	364	558	-35%
Yale Information Sources Directory	1,871	1,282	46%	Journal of Clinical Investigation (3/96)*	13	-	-	Cardiovascular System Module (1/96)*	1	-	-
Yale Library Catalog (OPAC)	25,921	22,831	14%	JAMA (3/96)*	35	-	-	Concise Atlas - Cardiothoracic (2/96)*	22	-	-
				Lancet (3/96)*	22	-	-	Concise Atlas - Chest (2/96)*	20	-	-
Email/news/networks	164,434	91,656	79%	Legislate	171	191	-10%	Embryo images	1,051	318	231%
Biomed Email	103,964	69,532	50%	Micromedex	137	26	427%	EPS Review	117	109	7%
Bulldog Access (1/96)*	375	-	-	MMWR	281	375	-25%	Extremities Quiz (10/95)*	344	-	-
MEDINFO (Yale-New Haven gopher)	3,969	8,441	-53%	Network Entrez	70	1	6900%	Forebrain (Syracuse)	78	62	26%
NIH gopher	748	1,710	-56%	New England Journal of Medicine (8/95)*	402	-	-	Functional Anatomy of the Heart (1/96)*	65	-	-
Pantheon/Minerva (3/96)*	1,043	-	-	NEXIS	2,058	2,681	-23%	Gross Anatomy Review	1,133	1493	-24%
World Wide Web	45,151	623	7147%	OMIM/GDB	293	364	-20%	HARP (Histological Anatomy Review)	225	298	-24%
YaleInfo	9,184	11,350	-19%	OncoDisc	63	112	-44%	Head Quiz (2/96)*	309	-	-
				Pediatrics (3/96)*	36	-	-	Histology Quizbank (10/95)*	120	-	-
word processing & utilities (CRL)	3349	3,211	4%	Phone Books (4/96)*	126	-	-	Histology Video Review	201	330	-39%
Epi Info	114	216	-47%	Science (3/96)*	58	-	-	HyperBRAIN (11/95)*	14	-	-
Excel for Windows (2/96)*	124	-	-	Scientific American Medicine Consult	184	571	-68%	HyperCELL	124	158	-22%
Format disk	117	151	-23%	Yellow Pages (4/96)*	18	-	-	Hyperheart	221	159	39%
FTP for Windows (2/96)*	6	-	-					Interactive Brain Atlas (11/95)*	184	-	-
Health Risk Appraisal	25	45	-44%	Grant and research information	1,036	1,455	-29%	Interactive Respiratory Physiology	20	-	-
Reconnect Printer (2/96)*	144	-	-	Annual grant deadlines	220	344	-36%	KINEMAGE	109	98	11%
Virus Scanner (F-PROT) (2/96)*	67	-	-	CT CRISP	457	570	-20%	Lazy Eye	139	181	-23%
Wordperfect for Windows	2752	2,799	-2%	IRIS (1/96)*	67	-	-	MacBaby	785	532	48%
				NIH Guide to Grants & Contracts	292	541	-46%	Microbiology Quizbank	297	-	-
								Microbiology VideoIndex (10/95)*	30	-	-
				Clinical assistance	713	870	-18%	Neuroanatomy Review	193	189	2%
				Coag Advisor	215	232	-7%	Neuroatlas (Miles)	56	140	-60%
				DXplain (1/96)*	105	-	-	Neuron Model: Tutorial	60	45	33%
				NIH Consensus Development Statements	119	152	-22%	Neuron Model: Current Clamp	54	48	13%
				Physician Data Query (PDQ)	274	349	-21%	Neuron Model: Voltage Clamp	50	40	25%
								Pathology Quizbank	1,681	656	156%
								Perineum Quiz (2/96)*	224	-	-
								PreTest (11 different fields) (5/96)*	107	-	-
								Superhead	280	276	1%
								Thorax Quiz (12/95)*	313	-	-
								Tutorial for Hypercell	21	47	-55%
								USMLE Step 1 (4/96)*	88	-	-
								USMLE Step 2 (4/96)*	42	-	-
								Virtual Heart	185	334	-45%

* Application was added in the month shown

NetMenu in the Medical Library

Total connections



- 1993-94
- 1994-95
- 1995-96

Overall usage for selected databases

	<u>Feb-95</u>	<u>Mar-95</u>	<u>Apr-95</u>	<u>May-95</u>	<u>Jun-95</u>	<u>Jul-95</u>	<u>Aug-95</u>	<u>Sep-95</u>	<u>Oct-95</u>	<u>Nov-95</u>	<u>Dec-95</u>	<u>Jan-96</u>	<u>Feb-96</u>	<u>Mar-96</u>	<u>Apr-96</u>	<u>May-96</u>	<u>Jun-96</u>	<u>Jul-96</u>
Summary																		
Current Contents	576	613	520	543	399	381	483	458	483	391	398	552	522	514	554	494	454	491
MEDLINE	9,313	10,244	8,757	8,536	8,712	8,468	9,533	11,063	13,985	13,411	9,821	14,533	15,599	11,338	10,935	11,259	12,549	14,114
Medical Center Web server	-	-	-	-	116,454	138,064	134,026	123,985	161,237	156,114	148,897	176,546	180,348	195,382	200,197	200,197	213,995	243,844
Electronic mail messages sent	-	-	-	-	-	-	170,427	196,926	259,024	235,727	195,707	242,233	271,489	303,190	337,167	302,991	315,220	309,517
Yale biomedical gopher	4,646	5,516	4,699	4,795	4,658	4,570	4,697	4,403	8,379	3,966	2,594	3,860	3,762	3,979	3,778	4,013	2,841	2,855

Details: Medline

1966-75 search sets	4,300	5,363	4,074	5,015	4,512	4,032	4,889	3,157	3,910	3,363	3,067	4,390	4,485	3,398	4,280	4,264	4,314	4,447
1976-85 search sets	8,584	10,291	8,403	9,906	9,739	7,302	10,415	6,267	7,341	7,423	6,212	9,334	7,796	12,270	14,996	16,766	16,462	20,241
1986-89 search sets	19,562	25,238	19,190	20,311	18,258	18,266	21,079	15,755	21,090	17,676	15,262	20,327	20,509	17,497	21,324	24,559	23,762	30,139
1990-present search sets	62,281	67,323	55,147	55,722	54,344	58,897	64,629	55,592	62,468	65,720	52,271	71,578	72,196	56,808	67,533	72,710	78,495	90,799
Core Biomedical Collection search sets	-	-	-	-	-	-	460	1,192	1,180	1,424	842	1,396	1,244	893	789	945	1,922	3,725
nursing search sets	2,623	2,522	2,396	1,247	939	1,078	558	1,200	2,205	2,244	1,144	2,433	3,135	1,779	2,366	2,078	1,612	1,541
health planning search sets	-	-	-	-	1,125	1,014	593	1,509	1,540	2,079	1,329	1,855	2,176	1,283	2,066	966	815	946

Details: Current Contents

Current Contents total	576	613	520	543	399	381	483	458	483	391	398	552	522	514	554	494	454	491
Biomed database	482	539	434	470	336	336	410	399	437	329	335	474	460	457	473	429	395	434
Scitec database	94	74	86	73	63	45	73	59	46	62	63	78	62	57	81	65	59	57

Medical Center Web usage report

Top 10 pages accessed by Yale users

this month	last month
Medical Library	Medical Library
Medical Center page	Medical Center page
Server search	Server search
School of Medicine page	School of Medicine page
Medical Library's Internet search page	Medical Library's Internet search page
MedMenu	MedMenu
Medical Library's other Yale sites page	Medical Library's other Yale sites page
Health sciences Internet resources page	Medical Administrative Systems
Academic departments page	Academic departments page
Index of all pages	Health sciences Internet resources page

Top 10 pages accessed by external users

this month	last month
C/AIM style manual	School of Medicine page
Medical Center page	Medical Center page
School of Medicine page	School of Medicine's admissions viewbook
Server search	Server search
School of Medicine's admissions viewbook	Medical Library
Medical Library	Child Study Center's Autism/PDD Clinic
Yale Journal of Biology and Medicine	Academic departments page
Child Study Center's Autism/PDD Clinic	Cancer Center's Referring Physician's Guide
Academic departments page	Epidemiology & Public Health
Epidemiology & Public Health	MedMenu

	Jun-95	Jul-95	Aug-95	Sep-95	Oct-95	Nov-95	Dec-95	Jan-96	Feb-96	Mar-96	Apr-96	May-96	Jun-96	Jul-96
Server total	116,454	138,064	134,026	123,985	161,237	156,114	148,897	176,546	180,348	195,382	200,197	200,197	213,995	213,995

Details

Medical Center	4,436	3,622	3,827	4,097	5,176	6,449	5,762	6,749	7,716	8,081	8,906	8,403	6,703	6,437
Yale-New Haven Hospital	329	512	896	1,085	1,032	1,084	577	773	819	892	880	1,142	675	811
School of Medicine	1,563	2,819	5,315	3,555	3,724	3,725	2,733	2,848	2,622	2,917	3,227	3,760	3,442	3,502
School of Nursing	-	-	-	-	-	-	-	-	-	-	-	213	332	284
Academic Departments*														
Anesthesiology	-	-	-	-	-	-	122	231	252	213	234	206	181	203
Boyer Center for Molecular Medicine	162	302	341	160	143	150	147	166	214	173	186	195	231	224
Cancer Center	-	-	-	-	-	-	-	16	59	166	263	491	257	303
Cell Biology	-	-	348	525	551	587	495	560	458	396	311	291	247	268
Cellular & Molecular Physiology	-	25	105	35	143	169	146	121	140	119	126	310	119	164
Child Study Center	-	-	-	-	-	-	-	-	-	-	-	-	-	-
Comparative Medicine	-	-	-	-	-	-	-	-	-	-	24	42	27	35
Dermatology	-	-	-	-	-	-	-	-	113	208	240	396	326	315
Diagnostic Radiology	-	-	-	-	-	140	246	215	165	178	162	233	204	273
Epidemiology & Public Health	-	-	-	-	-	-	498	756	799	910	982	962	789	970
Genetics	19	190	191	157	148	232	415	315	512	448	383	268	192	217
History of Medicine	-	-	-	-	-	-	-	-	-	-	48	78	73	66
Immunobiology	-	-	-	-	-	-	-	-	-	-	-	-	-	-
Internal Medicine	-	-	-	-	-	-	-	46	156	233	236	172	163	205
Laboratory Medicine	-	-	-	-	-	-	-	-	-	-	95	56	43	51
Neurobiology	-	-	-	-	-	147	137	164	175	274	291	399	298	361
Neurology	159	151	290	210	241	238	188	215	226	191	175	176	151	165
Neuroscience Program	-	-	-	-	-	-	-	-	-	-	-	-	62	64
Obstetrics & Gynecology	-	-	-	-	57	62	64	76	73	108	151	139	134	295
Ophthalmology	186	281	523	336	354	394	396	369	494	411	380	359	346	325
Orthopaedics & Rehabilitation	-	-	-	-	-	-	-	-	-	-	-	47	46	56
Pathology	-	-	-	-	-	-	-	-	63	237	398	380	303	358
Pediatrics	-	-	-	-	-	-	-	-	-	-	-	-	-	-
Pharmacology	57	112	191	163	145	144	98	156	142	120	119	176	117	130
Psychiatry	290	640	457	605	596	689	585	716	715	656	605	598	458	571
Surgery	-	-	-	-	-	130	116	143	184	137	166	167	130	166
Therapeutic Radiology	-	-	-	-	-	-	-	-	-	-	-	-	-	-

*Molecular Biochemistry & Biophysics and the Center for Medical Informatics are not listed because they reside on other servers.

	Jun-95	Jul-95	Aug-95	Sep-95	Oct-95	Nov-95	Dec-95	Jan-96	Feb-96	Mar-96	Apr-96	May-96	Jun-96	Jul-96
Major resources														
School's organizational chart	-	-	-	-	-	-	-	-	-	-	-	109	102	113
Computing page	-	-	-	-	-	-	23	74	161	198	153	191	202	200
Core research facilities page	-	-	-	-	-	-	-	44	72	113	151	132	120	153
Education page	-	-	-	-	-	-	-	100	174	173	255	284	311	321
Emerging Infections Information Network	-	-	-	-	-	-	-	-	931	889	1,295	1,094	843	774
Faculty Research Interests database	-	-	-	-	-	-	-	-	177	185	520	532	467	544
Medical Library	866	1,143	1,748	2,495	3,049	3,809	3,286	4,799	2,493	6,034	6,382	6,155	5,917	7,069
MedMenu	-	-	-	-	-	-	-	-	750	1,106	1,190	1,029	862	1,093

Research Affairs	-	-	-	-	-	-	-	200	334	403	338	257	278	306
School of Medicine application	432	500	399	607	491	186	131	169	183	165	252	448	968	830
Service departments														
Biomedical Computing Unit	184	128	129	200	173	217	193	196	184	218	218	315	182	220
Biomedical Communications	243	359	286	237	284	305	283	282	238	348	326	505	386	374
C/AIM	2,835	4,884	4,587	3,854	7,522	5,409	5,033	5,232	4,600	4,274	3,824	3,945	3,672	4,321
Center for Cell Imaging	-	-	-	222	231	249	166	217	184	160	172	174	170	145
Medical Administrative Systems	298	287	290	323	338	338	256	336	394	368	339	237	346	324
Who connected														
Yale	-	6,628	8,684	12,474	15,217	19,324	16,176	23,709	24,089	29,723	33,575	39,920	31,991	31,991
other US educational institutions	-	32,876	26,683	26,616	31,984	32,697	24,983	31,536	33,167	32,973	34,193	36,967	37,703	40,093
US government & military	-	4,293	3,333	3,258	4,119	3,231	2,664	4,636	2,734	2,738	3,068	2,215	3,605	3,597
US commercial institutions	-	31,186	28,106	30,845	42,438	34,069	36,343	38,325	40,016	41,853	42,013	42,608	44,875	54,667
US non-profit organizations	-	1,974	2,352	1,390	1,987	1,762	1,698	2,039	2,064	2,265	2,616	1,971	2,064	2,318
Major online service providers	-	10,292	10,302	9,561	12,625	10,807	12,304	16,078	16,675	19,446	17,368	17,124	19,705	22,145
International	-	18,327	21,496	22,947	22,955	23,847	27,164	27,164	27,164	29,394	28,062	32,944	32,841	35,865
# of unique hosts connecting	-	16,080	15,823	18,813	23,278	23,608	22,838	26,887	27,295	28,973	29,708	32,140	31,955	35,609