

# IAIMS Monthly Report

October 1996

## Overall resource usage

<u>Type of application</u>	<u>this month</u>	<u>Oct-95</u>	<u>% change</u>
CINAHL	491	349	41%
Core Biomedical Collection	477	294	62%
Current Contents	2331*	483	218%
Electronic mail (# messages sent)	456,571	259,024	76%
messages per user per day	2.9	-	-
HealthSTAR	539	231	133%
Medline	17,947	13,411	34%
searches per active user per month	8.0	-	-
Medical Center World Wide Web			
Medical Center home page	8,602	5,176	66%
Hospital home page	844	1,032	-18%
School of Medicine home page	3,906	3,724	5%
Medical Library home page	3,845	3,049	26%

\*As of 8/96, Current Contents usage includes automatic searches

## Background information

	<u>Hospital</u>	<u>Schools of Medicine &amp; Nursing</u>
Personal computers as of 10/95	2,200	7,500
Electronic mail users as of 6/96	1,000	4,089
Networked computers as of 6/96	1,575	2,500
Full-time faculty, 1995-96	-	1,270
Medical & graduate students, 1995-	-	907
Residents & postdocs, 1995-96	388	916
Full-time staff, 1995-96	4,600	2,392
Nursing staff, 1995-96	1,250	-
Number of beds, 1995-96	900	-

## Usage of NetMenu workstations

<u>Type of application</u>	<u>Library NetMenu</u>			<u>Hospital NetMenu</u>			<u>Nursing NetMenu</u>		
	<u># of connections</u>			<u># of connections</u>			<u># of connections</u>		
	<u>this month</u>	<u>Oct-95</u>	<u>% change</u>	<u>this month</u>	<u>Oct-95</u>	<u>% change</u>	<u>this month</u>	<u>Oct-95</u>	<u>% change</u>
Medical Education	1,225	1,397	-12%	-	-	-	-	-	-
Bibliographic databases & search tools	9,312	9,296	0%	2,047	1747	17%	456	216	111%
Full text & factual databases	568	619	-8%	2,388	1343	78%	26	6	-
Grant & research information	37	96	-61%	-	-	-	4	1	-
Clinical assistance	8	73	-89%	53	36	47%	4	8	-
Email/news/networks	23,159	14,017	65%	8,706	3245	168%	945	280	238%
Word processing & utilities	453	186	144%	1,433	765	87%	-	-	-
Hospital information systems	-	-	-	22,881	11843	93%	-	-	-
Procedure recorders	-	-	-	430	317	36%	-	-	-
<b>Total</b>	<b>34,762</b>	<b>25,684</b>	<b>35%</b>	<b>37,938</b>	<b>19,296</b>	<b>97%</b>	<b>1,435</b>	<b>511</b>	<b>181%</b>
connections per workstation	1,337	1,223	9%	457	378	21%	718	256	

## Inventory of NetMenu workstations

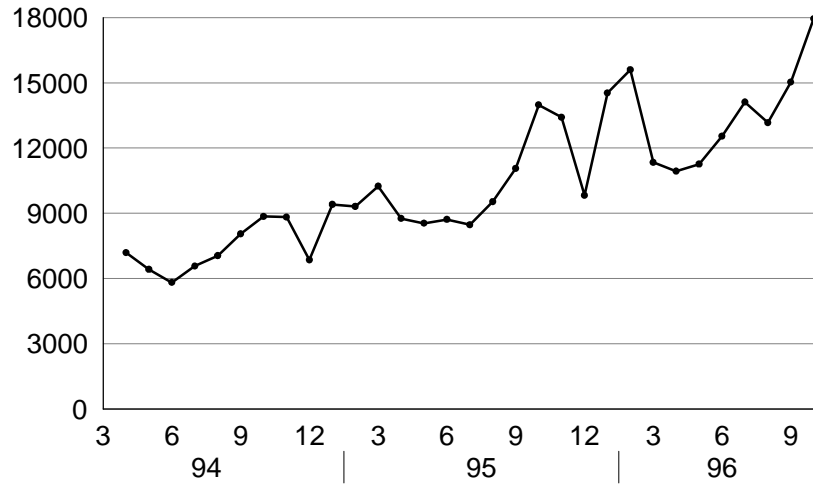
<u>Location</u>	<u># of workstations</u>	
	<u>this month</u>	<u>Oct-95</u>
Libraries	28	25
Hospital	83	51
<b>Total</b>	<b>111</b>	<b>76</b>

## Applications added to NetMenu this month

# Institutional Resource Usage

## MEDLINE

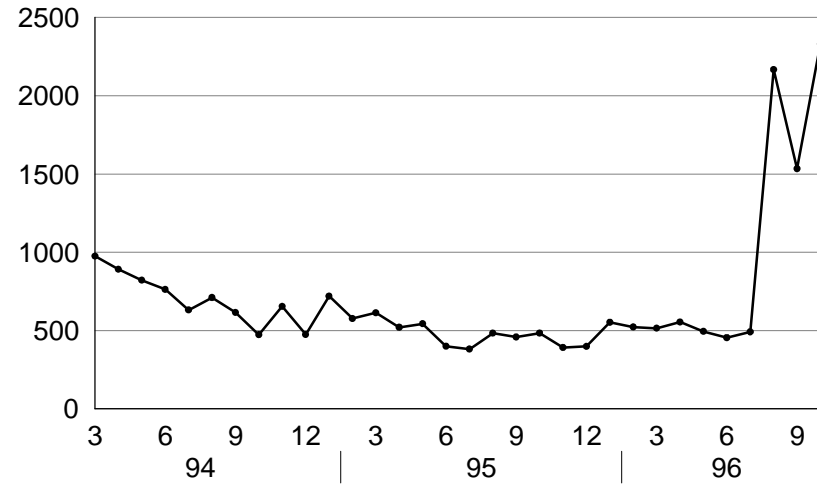
number of sessions per month



source: MEDLINE usage data

## Current Contents

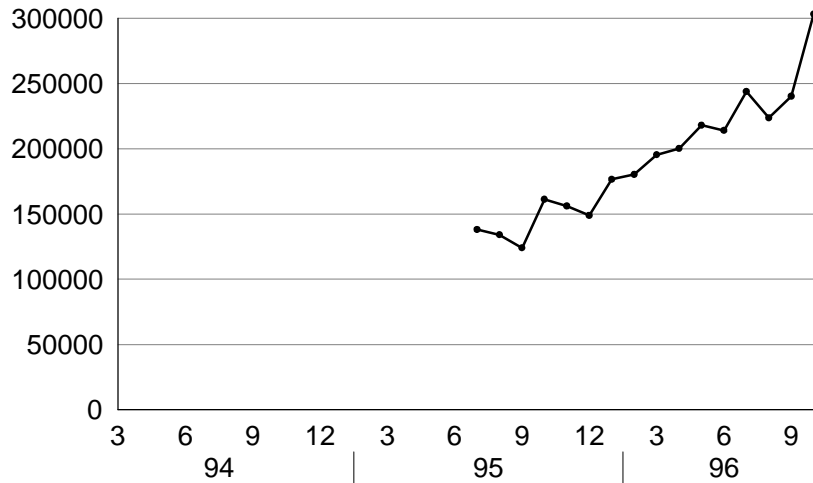
number of connections per month



source: Current Contents usage data

## Medical Center Web server

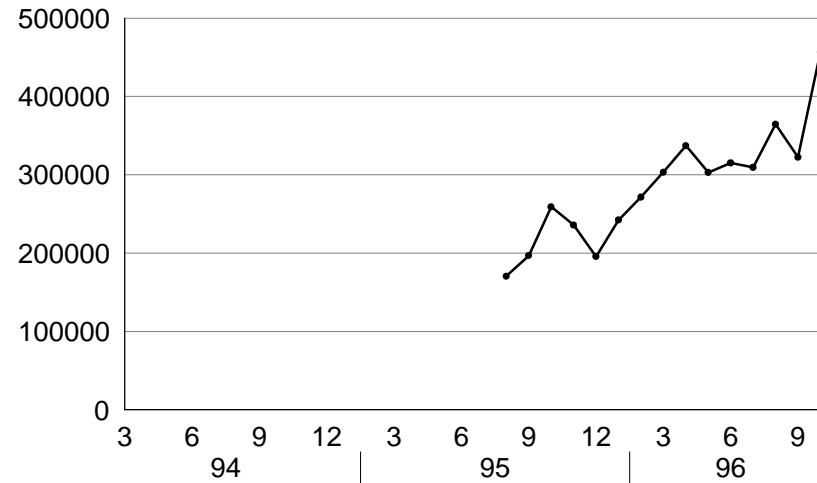
number of pages per month



source: WEB usage data

## Electronic mail

number of messages per month

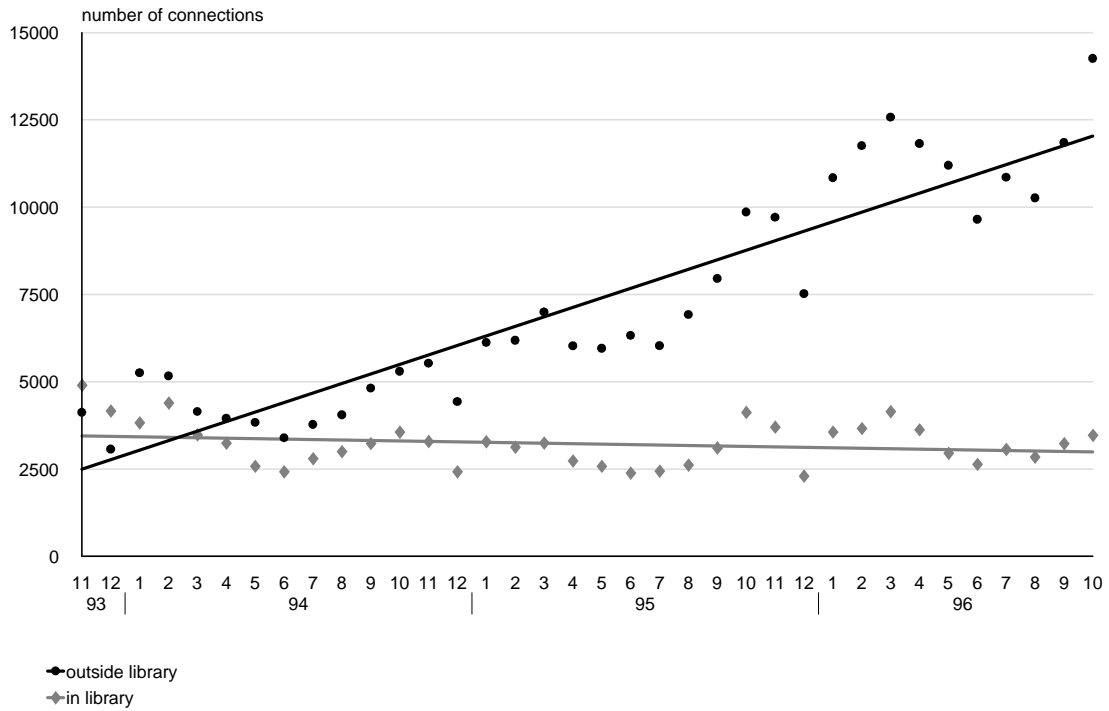


source: PMDF usage data

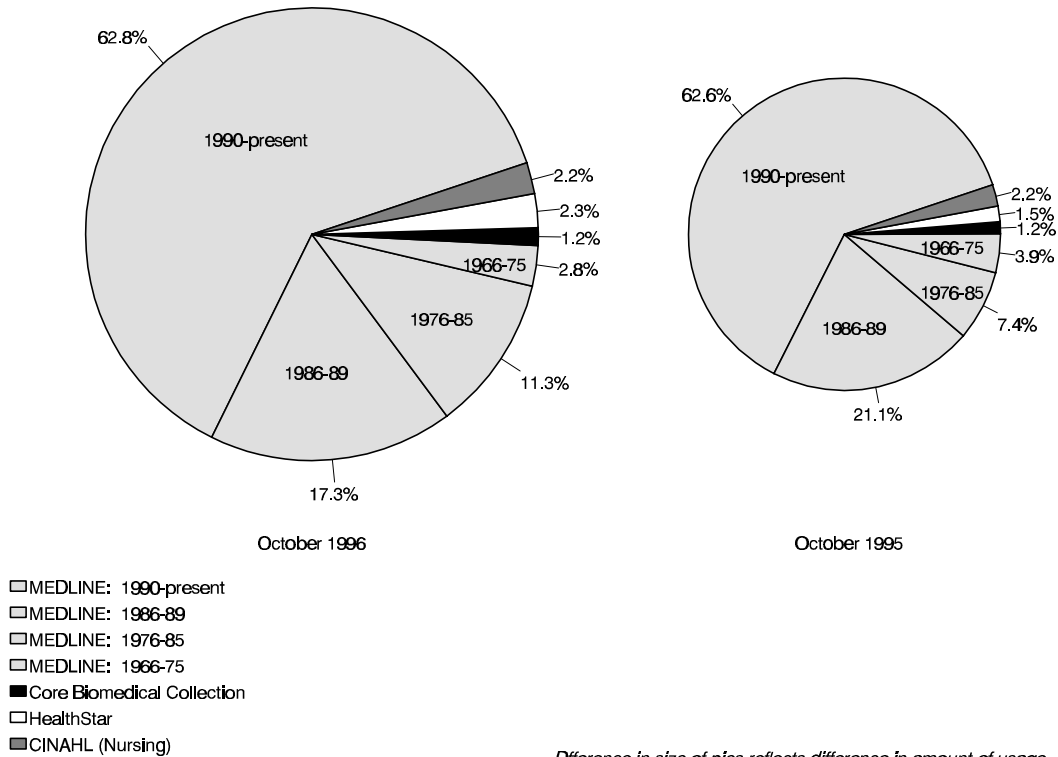
# OVID Usage

## OVID usage over time

includes MEDLINE, CINAHL, HealthStar, and Core Biomedical Collection



## OVID usage Breakdown of databases



## Details for NetMenu Hospital usage

<u>Application</u>	<u>total # of connections</u>		
	<u>Oct-96</u>	<u>Oct-95</u>	<u>% change</u>
<b>Hospital information systems</b>	<b>22881</b>	<b>11843</b>	<b>93%</b>
CCSS	12220	6148	99%
ChartView	306	96	219%
Clinical laboratory	9717	5383	81%
Diagnostic Imaging	192	113	70%
EPIC	219	13	1585%
Surgical Pathology	227	90	152%
<b>Bibliographic databases and search tools</b>	<b>2047</b>	<b>1747</b>	<b>17%</b>
CINAHL	192	131	47%
Health Planning and Administration	57	45	27%
MEDLINE	1698	1382	23%
Yale Library Catalog (OPAC)	100	189	-47%
<b>Word processing &amp; utilities</b>	<b>1433</b>	<b>765</b>	<b>87%</b>
Clinical Workstation locations	82	-	-
Format disk	50	20	150%
Virus scan	52	28	86%
Wordperfect	1249	717	74%
<b>Clinical assistance</b>	<b>53</b>	<b>36</b>	<b>47%</b>
Coag Advisor	53	36	47%

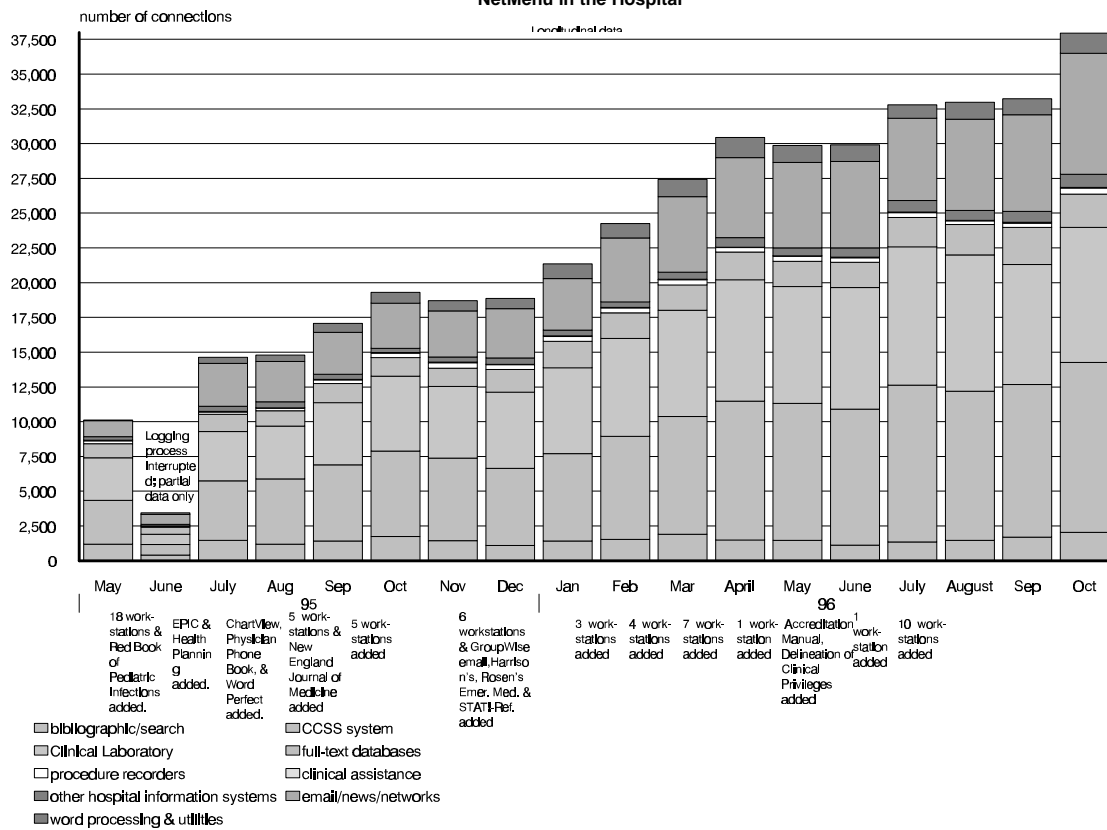
<u>Application</u>	<u>total # of connections</u>		
	<u>Oct-96</u>	<u>Oct-95</u>	<u>% change</u>
<b>Full text and factual databases</b>	<b>2388</b>	<b>1343</b>	<b>78%</b>
Delineation of Clinical Privileges	73	-	-
Harrison's	342	-	-
JCAHO Accreditation Manual	23	-	-
Little Brown Handbooks	199	184	8%
Merck Manual	90	142	-37%
Micromedex	1180	658	79%
New England Journal of Medicine	230	214	7%
Red Book on Pediatric Infections	22	28	-21%
Rosen's Emergency Medicine	62	-	-
STAT!-Reference	100	-	-
YNHH Physician Phone Book	67	117	-43%
<b>Email/news/networks</b>	<b>8706</b>	<b>3245</b>	<b>168%</b>
Biomed Email	942	532	77%
GroupWise Email	1708	-	-
Internet access	6056	2713	123%
<b>Procedure recorders</b>	<b>430</b>	<b>317</b>	<b>36%</b>
Medicine	180	95	89%
Ob/Gyn	173	94	84%
Surgery	77	128	-40%

## Details for NetMenu Medical Library usage

Application	total # of connections			Application	total # of connections			Application	total # of connections		
	Oct-96	Oct-95	% change		Oct-96	Oct-95	% change		Oct-96	Oct-95	% change
<b>Bibliographic databases and search tools</b>	<b>9312</b>	<b>9296</b>	<b>0%</b>	<b>Full text and factual databases</b>	<b>568</b>	<b>619</b>	<b>-8%</b>	<b>Medical Education</b>	<b>1225</b>	<b>1397</b>	<b>-12%</b>
AIDSLINE	32	74	-57%	AIDSTrials/AIDSDrugs/DIRLINE	1	12	-92%	Abdomen Quiz	39	-	-
Biosis	61	277	-78%	American Journal of Medicine	17	-	-	Anatomic Explorer	77	132	-42%
Books in Print	23	-	-	American Journal of Surgery	3	-	-	Anatomic Explorer CT	39	67	-42%
CINAHL	39	186	-79%	Annals of Internal Medicine	6	-	-	Animated Embryo	23	85	-73%
Current Contents	88	238	-63%	Archives of General Psychiatry	17	-	-	Brainstem	20	10	100%
ERIC	15	-	-	BMJ	4	-	-	Brainstorm	15	17	-12%
Eureka	5	-	-	Britannica Online	12	-	-	Breath sounds	8	21	-62%
Expanded Academic Index	44	107	-59%	Canadian Medical Association Journal	3	-	-	Cardiac Angio	12	0	-
Health Planning and Administration	47	56	-16%	Circulation	5	-	-	Cardiac Auscultation	21	81	-74%
InfoFinder	200	110	82%	Faculty Research Interests database	17	-	-	Cardiac Echo	5	27	-81%
MEDLINE	5533	5544	0%	FREIDA	138	114	21%	Cardiac MRI	6	10	-40%
PsycINFO	119	311	-62%	GenBank	22	29	-24%	Cardiac Perfusion Imaging: SP	9	1	800%
Science Citation Index	151	215	-30%	History of Science & Technology	9	-	-	Cardiac Perfusion Imaging: Pl	6	1	500%
Search term lookup	11	31	-65%	Journal of Biological Chemistry	8	-	-	Cardiothoracic Image Quiz	20	24	-17%
Yale Library Catalog (OPAC)	2944	2147	37%	Journal of Bone & Joint Surgery	0	-	-	Cardiothoracic Imaging	15	44	-66%
				Journal of Clinical Investigation	2	-	-	Concise Atlas - Cardiothoracic	8	-	-
				Journal of Molecular Biology	1	-	-	Concise Atlas - Chest	6	-	-
<b>Email/news/networks</b>	<b>23159</b>	<b>14017</b>	<b>65%</b>	JAMA	16	-	-	Embryo images	16	172	-91%
Biomed Email	14781	10321	43%	Lancet	6	-	-	EPS Review	15	15	0%
Bulldog Access	20	-	-	Legislate	5	11	-55%	Extremities Quiz	99	-	-
MEDINFO (Yale-New Haven gopher)	-	706	-	Micromedex	6	25	-76%	Forebrain (Syracuse)	5	1	400%
NIH gopher	-	97	-	MMWR	13	54	-76%	Gross Anatomy Review	247	177	40%
Pantheon/Minerva	843	-	-	Network Entrez	5	1	400%	HARP (Histological Anatomy Review)	77	64	20%
World Wide Web	7515	1590	373%	New England Journal of Medicine	17	84	-80%	Head Quiz	14	-	-
YaleInfo	-	1303	-	NEXIS	128	221	-42%	Histology Quizbank	61	-	-
				Nucleic Acids Research	3	-	-	Histology Video Review	38	47	-19%
<b>word processing &amp; utilities (CRL)</b>	<b>453</b>	<b>186</b>	<b>144%</b>	OMIM/GDB	29	37	-22%	HyperCELL	10	32	-69%
Epi Info	27	5	440%	OncoDisc	0	9	-100%	Hyperheart	11	62	-82%
Excel for Windows	30	-	-	Pediatrics	15	-	-	Interactive Brain Atlas	8	-	-
Format disk	5	10	-50%	Phone Books	37	-	-	Interactive Histology	0	-	-
FTP for Windows	0	-	-	Science	20	-	-	Interactive Respiratory Physiology	3	-	-
Health Risk Appraisal	2	3	-33%	Scientific American Medicine Consult	3	22	-86%	KINEMAGE	8	17	-53%
Reconnect Printer	0	-	-	Yellow Pages	0	-	-	Lazy Eye	3	7	-57%
Virus Scanner (F-PROT)	20	-	-					MacBaby	15	117	-87%
Wordperfect for Windows	369	168	120%	<b>Grant and research information</b>	<b>37</b>	<b>96</b>	<b>-61%</b>	Microbiology Quizbank	48	-	-
				Annual grant deadlines	6	19	-68%	Neuroanatomy Review	12	6	100%
				CT CRISP	21	44	-52%	Neuron Model: Tutorial	7	3	133%
				IRIS	9	-	-	Neuron Model: Current Clamp	10	3	233%
				NIH Guide to Grants & Contracts	1	33	-97%	Neuron Model: Voltage Clamp	4	0	-
								Pathology Quizbank	77	88	-13%
				<b>Clinical assistance</b>	<b>8</b>	<b>73</b>	<b>-89%</b>	Perineum Quiz	13	-	-
				Coag Advisor	0	23	-100%	PreTest (11 different fields)	23	-	-
				DXplain	2	-	-	Superhead	6	15	-60%
				NIH Consensus Development Statements	0	15	-100%	Thorax Quiz	18	-	-
				Physician Data Query (PDQ)	6	35	-83%	USMLE Step 1	19	-	-
								USMLE Step 2	12	-	-
								Wheater's Interactive Histology	17	-	-

# NetMenu workstation usage

## NetMenu in the Hospital



## NetMenu in the Medical Library

