

IAIMS Monthly Report

November 1996

Overall resource usage

<u>Type of application</u>	<u>this month</u>	<u>Nov-95</u>	<u>% change</u>
CINAHL	473	351	35%
Core Biomedical Collection	597	305	96%
Current Contents	1798*	391	360%
Electronic mail (# messages sent)	492,880	235,727	109%
messages per user per day	3.1	-	-
HealthSTAR	459	302	52%
Medline	16,825	13,411	25%
searches per active user per month	7.5	-	-
Medical Center World Wide Web			
Medical Center home page	29,781	6,449	362%
Hospital home page	1,180	1,084	9%
School of Medicine home page	5,814	3,725	56%
Medical Library home page	12,118	3,809	218%

*As of 8/96, Current Contents usage includes automatic searches

Background information

	<u>Hospital</u>	<u>Schools of Medicine & Nursing</u>
Personal computers as of 10/95	2,200	7,500
Electronic mail users as of 6/96	1,000	4,089
Networked computers as of 6/96	1,575	2,500
Full-time faculty, 1995-96	-	1,270
Medical & graduate students, 1995-96	-	907
Residents & postdocs, 1995-96	388	916
Full-time staff, 1995-96	4,600	2,392
Nursing staff, 1995-96	1,250	-
Number of beds, 1995-96	900	-

Usage of NetMenu workstations

<u>Type of application</u>	<u>Library NetMenu</u>			<u>Hospital NetMenu</u>			<u>Nursing NetMenu</u>		
	<u># of connections</u>	<u>Nov-95</u>	<u>% change</u>	<u>this month</u>	<u>Nov-95</u>	<u>% change</u>	<u>this month</u>	<u>Nov-95</u>	<u>% change</u>
Medical Education	2,029	1,174	73%	-	-	-	-	-	-
Bibliographic databases & search tools	9,101	8,010	14%	1,774	1439	23%	468	338	38%
Full text & factual databases	611	565	8%	2,117	1307	62%	28	12	-
Grant & research information	26	92	-72%	-	-	-	2	1	-
Clinical assistance	10	68	-85%	49	45	9%	9	4	-
Email/news/networks	20,698	12,532	65%	9,684	3318	192%	701	561	25%
Word processing & utilities	317	257	23%	1,464	718	104%	-	-	-
Hospital information systems	-	-	-	23,785	11488	107%	-	-	-
Procedure recorders	-	-	-	361	381	-5%	-	-	-
Total	32,792	22,698	44%	39,234	18,696	110%	1,208	916	32%
connections per workstation	1,261	1,081	17%	451	367	23%	604	458	

Inventory of NetMenu workstations

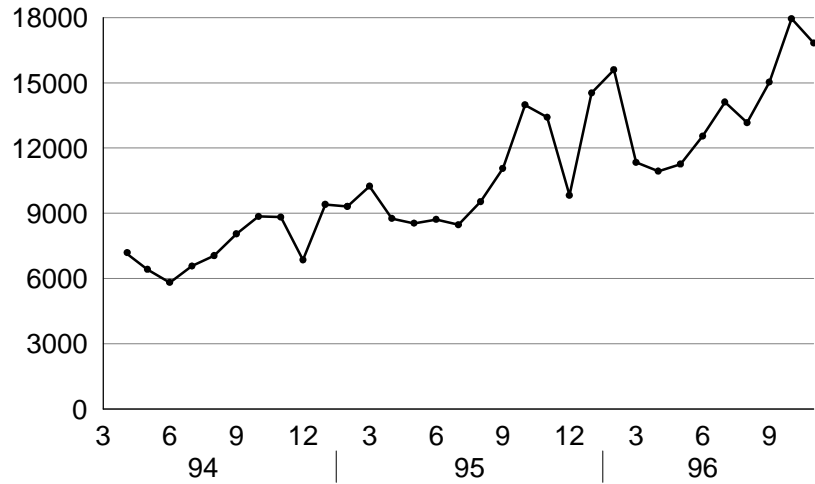
<u>Location</u>	<u># of workstations</u>	
	<u>this month</u>	<u>Nov-95</u>
Libraries	28	25
Hospital	87	51
Total	115	76

Applications added to NetMenu this month

Institutional Resource Usage

MEDLINE

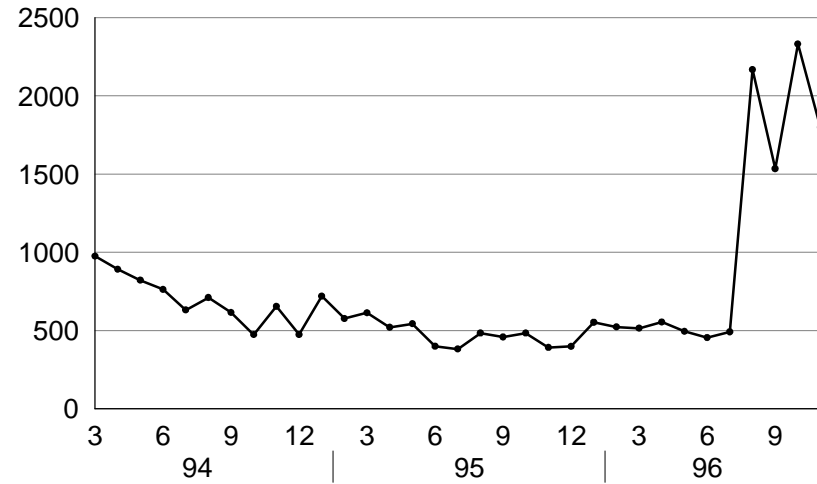
number of sessions per month



source: MEDLINE usage data

Current Contents

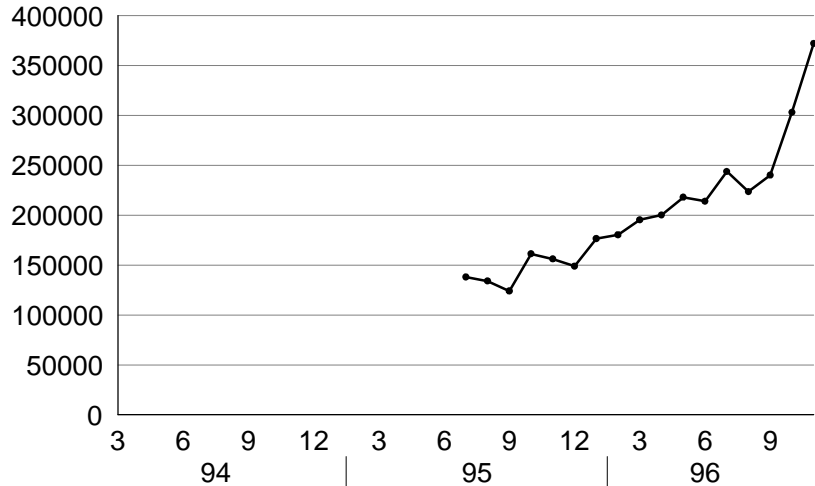
number of connections per month



source: Current Contents usage data

Medical Center Web server

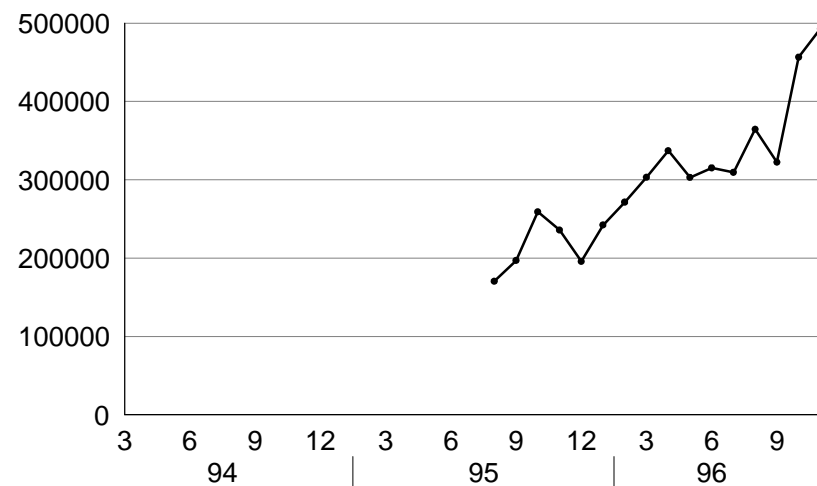
number of pages per month



source: WEB usage data

Electronic mail

number of messages per month

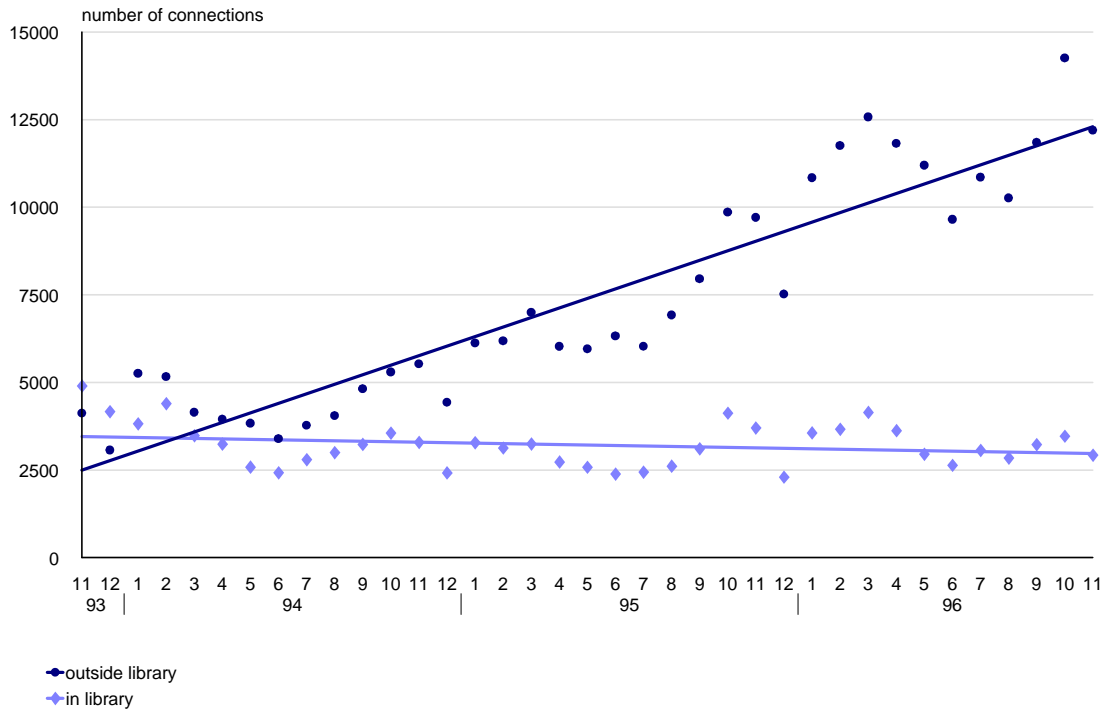


source: PMDF usage data

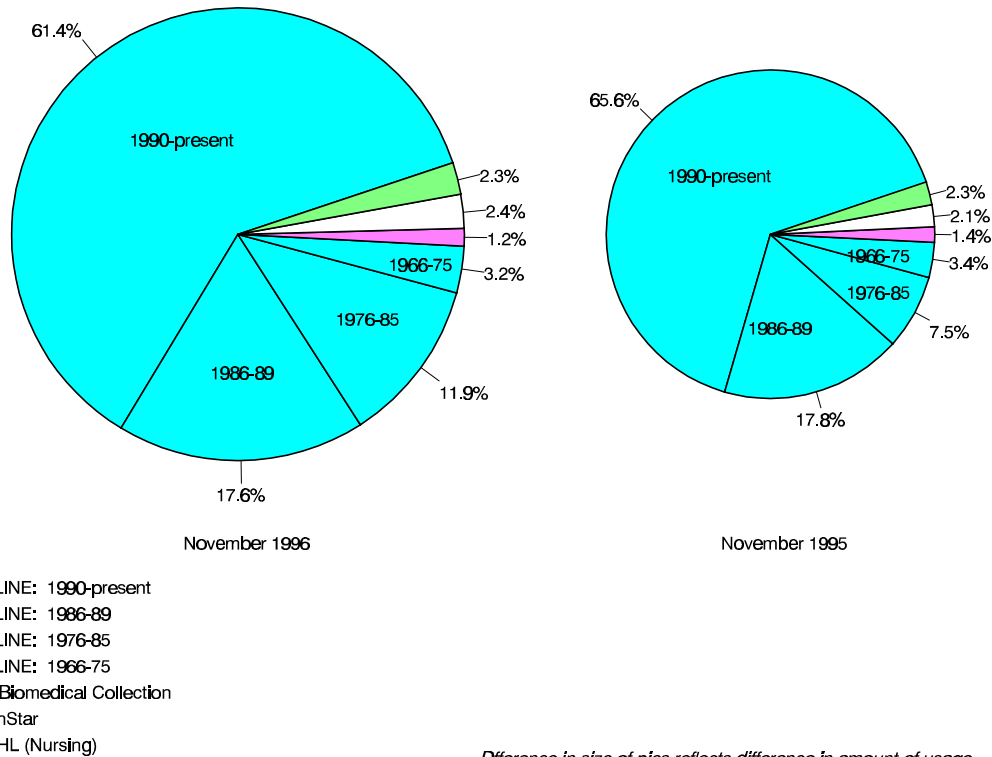
OVID Usage

OVID usage over time

includes MEDLINE, CINAHL, HealthStar, and Core Biomedical Collection



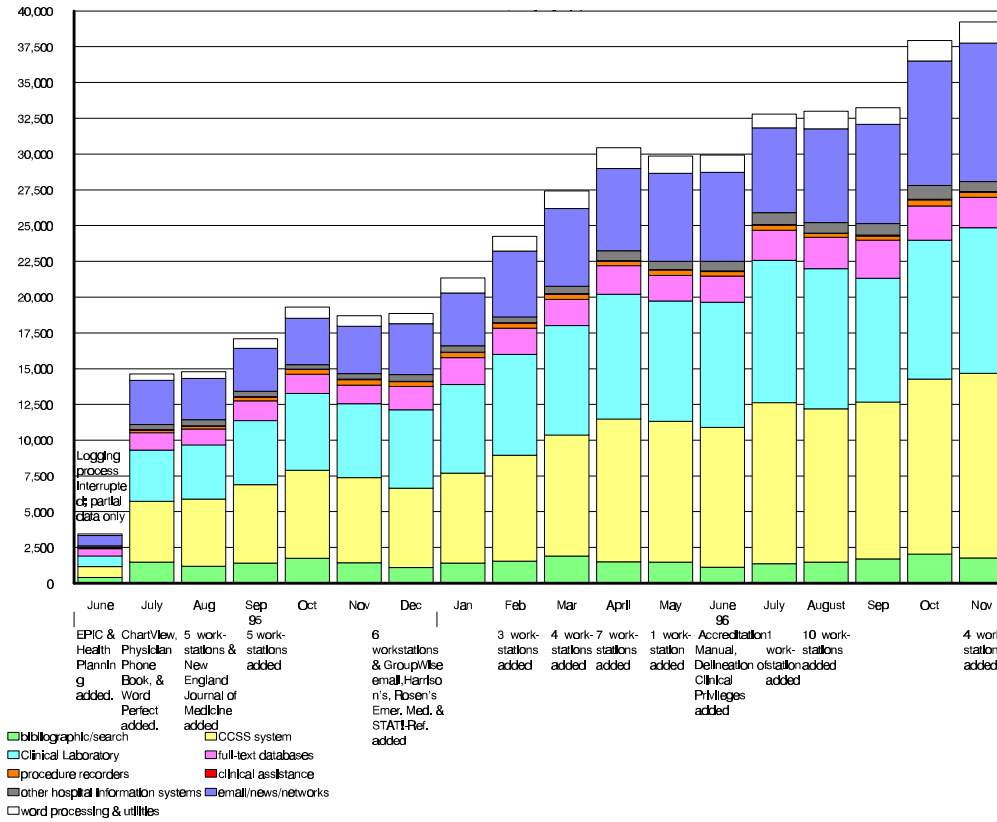
OVID usage Breakdown of databases



Difference in size of pies reflects difference in amount of usage.

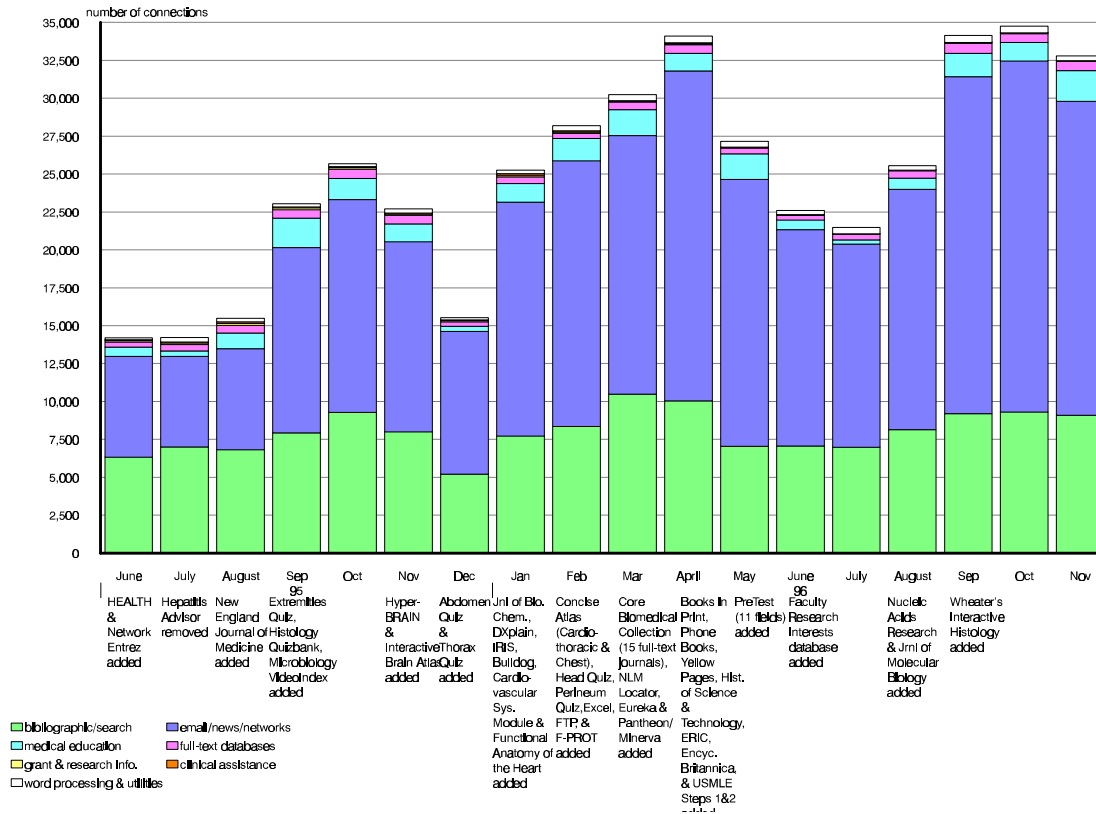
NetMenu workstation usage

NetMenu in the Hospital



NetMenu in the Medical Library

Longitudinal data



Details for NetMenu Hospital usage

<u>Application</u>	<u>total # of connections</u>			<u>Application</u>	<u>total # of connections</u>		
	<u>Nov-96</u>	<u>Nov-95</u>	<u>% change</u>		<u>Nov-96</u>	<u>Nov-95</u>	<u>% change</u>
Hospital information systems	23785	11488	107%	Full text and factual databases	2117	1307	62%
CCSS	12913	5939	117%	Delineation of Clinical Privileges	36	-	-
ChartView	195	155	26%	Harrison's	336	-	-
Clinical laboratory	10174	5168	97%	JCAHO Accreditation Manual	19	-	-
Diagnostic Imaging	146	135	8%	Little Brown Handbooks	165	212	-22%
EPIC	160	34	371%	Merck Manual	106	153	-31%
Surgical Pathology	197	57	246%	Micromedex	998	658	52%
				New England Journal of Medicine	198	175	13%
Bibliographic databases and search tools	1774	1439	23%	Red Book on Pediatric Infections	36	20	80%
CINAHL	148	98	51%	Rosen's Emergency Medicine	46	-	-
Health Planning and Administration	61	44	39%	STAT!-Reference	99	-	-
MEDLINE	1466	1170	25%	YNHH Physician Phone Book	78	89	-12%
Yale Library Catalog (OPAC)	99	127	-22%				
				Email/news/networks	9684	3318	192%
Word processing & utilities	1464	718	104%	Biomed Email	1072	609	76%
Clinical Workstation locations	81	-	-	GroupWise Email	2166	-	-
Format disk	58	14	314%	Internet access	6446	2709	138%
Virus scan	32	26	23%				
Wordperfect	1293	678	91%	Procedure recorders	361	381	-5%
				Medicine	142	78	82%
Clinical assistance	49	45	9%	Ob/Gyn	157	193	-19%
Coag Advisor	49	45	9%	Surgery	62	110	-44%

Details for NetMenu Medical Library usage

Application	total # of connections			Application	total # of connections			Application	total # of connections		
	Nov-96	Nov-95	% change		Nov-96	Nov-95	% change		Nov-96	Nov-95	% change
Bibliographic databases				Full text and factual databases	611	565	8%	Medical Education	2029	1174	73%
and search tools	9101	8010	14%	AIDSTrials/AIDSDrugs/DIRLINE	1	13	-92%	Abdomen Quiz	85	-	-
AIDSLINE	24	112	-79%	Academic Press Journals	1	-	-	Anatomic Explorer	149	157	-5%
Biosis	60	224	-73%	American Journal of Medicine	21	-	-	Anatomic Explorer CT	97	84	15%
Books in Print	27	-	-	American Journal of Obstetrics	3	-	-	Animated Embryo	29	17	71%
CINAHL	30	129	-77%	American Journal of Surgery	4	-	-	Brainstem	23	0	#DIV/0!
Current Contents	75	214	-65%	Annals of Internal Medicine	9	-	-	Brainstorm	6	4	50%
ERIC	6	-	-	Archives of General Psychiatry	19	-	-	Breath sounds	19	16	19%
Eureka	3	-	-	BMJ	5	-	-	Cardiac Angio	15	0	-
Expanded Academic Index	32	131	-76%	Britannica Online	13	-	-	Cardiac Auscultation	60	19	216%
Health Planning and Administration	14	111	-87%	Canadian Medical Association Journal	0	-	-	Cardiac Echo	11	6	83%
InfoFinder	201	108	86%	Circulation	2	-	-	Cardiac MRI	9	3	200%
MEDLINE	5298	4681	13%	Electronic Journals	14	-	-	Cardiac Perfusion Imaging: SP	1	2	-50%
PsycINFO	136	290	-53%	Faculty Research Interests database	17	-	-	Cardiac Perfusion Imaging: PI	4	0	#DIV/0!
Science Citation Index	101	221	-54%	FREIDA	136	118	15%	Cardiothoracic Image Quiz	9	10	-10%
Search term lookup	4	37	-89%	GenBank	10	20	-50%	Cardiothoracic Imaging	10	9	11%
Yale Library Catalog (OPAC)	3090	1752	76%	History of Science & Technology	18	-	-	Concise Atlas - Cardiothoracic	26	-	-
				Journal of Biological Chemistry	10	-	-	Concise Altas - Chest	48	-	-
Email/news/networks	20698	12532	65%	Journal of Bone & Joint Surgery	0	-	-	Concise Altas - Extremities	197	-	-
Biomed Email	12336	8449	46%	Journal of Clinical Investigation	1	-	-	Embryo images	17	20	-15%
Bulldog Access	12	-	-	Journal of Molecular Biology	2	-	-	EPS Review	17	16	6%
MEDINFO (Yale-New Haven gopher)	-	588	-	JAMA	15	-	-	Extremities Quiz	380	182	-
NIH gopher	-	77	-	Lancet	3	-	-	Forebrain (Syracuse)	1	1	0%
Pantheon/Minerva	1309	-	-	Legislate	2	18	-89%	Gross Anatomy Review	252	319	-21%
World Wide Web	7010	2192	220%	Micromedex	10	12	-17%	HARP (Histological Anatomy Review)	53	40	33%
YaleInfo	31	1226	-	MMWR	6	36	-83%	Head Quiz	2	-	-
				Network Entrez	6	0	#DIV/0!	Histology Quizbank	27	32	-
word processing & utilities (CRL)	317	257	23%	New England Journal of Medicine	23	38	-39%	Histology Video Review	23	23	0%
Epi Info	11	8	38%	NEXIS	160	211	-24%	HyperCELL	3	28	-89%
Excel for Windows	25	-	-	Nucleic Acids Research	3	-	-	Hyperheart	7	12	-42%
Format disk	5	8	-38%	OMIM/GDB	22	63	-65%	Interactive Brain Atlas	6	17	-
FTP for Windows	16	-	-	OncoDisc	0	9	-100%	Interactive Histology	0	-	-
Health Risk Appraisal	0	1	-100%	Pediatrics	14	-	-	Interactive Respiratory Physiology	8	-	-
Reconnect Printer	0	-	-	Phone Books	42	-	-	KINEMAGE	7	10	-30%
Virus Scanner (F-PROT)	10	-	-	Science	14	-	-	Lazy Eye	7	10	-30%
Wordperfect for Windows	250	240	4%	Scientific American Medicine Consult	5	27	-81%	MacBaby	9	2	350%
				Yellow Pages	0	-	-	Microbiology Quizbank	120	-	-
				Grant and research information	26	92	-72%	Neuroanatomy Review	8	3	167%
				Community of Science	2	-	-	Neuron Model: Tutorial	1	2	-50%
				CT CRISP	15	45	-67%	Neuron Model: Current Clamp	3	2	50%
				IRIS	9	-	-	Neuron Model: Voltage Clamp	5	3	-
				NIH Guide to Grants & Contracts	0	25	-100%	Pathology Quizbank	67	67	0%
				Clinical assistance	10	68	-85%	Perineum Quiz	16	-	-
				Coag Advisor	1	31	-97%	PreTest (11 different fields)	64	-	-
				DXplain	2	-	-	Superhead	7	9	-22%
				NIH Consensus Development Statement	0	6	-100%	Thorax Quiz	28	-	-
				Physician Data Query (PDQ)	7	31	-77%	USMLE Step 1	22	-	-
								USMLE Step 2	70	-	-
								Wheater's Interactive Histology	1	-	-