

Information Technology-Medicine Monthly Report

February 1997

Applications

<u>Type of application</u>	<u>this month</u>	<u>Feb-96</u>	<u>% change</u>
CINAHL	502	503	0%
Core Biomedical Collection	886	314	182%
Current Contents	3886*	522	244%
Electronic mail (# messages sent)	595,748	271,489	119%
messages per user per day	3.8	-	-
HealthSTAR	508	379	34%
Medline	17,329	15,599	11%
searches per active user per month	2.8	-	-
Medical Center World Wide Web			
Medical Center home page	28,326	7,716	267%
Hospital home page	1,205	819	47%
School of Medicine home page	5,229	2,622	99%
Medical Library home page	10,032	2,493	302%

*As of 8/96, Current Contents usage includes automatic searches

Background information

Personal computers as of 11/96
 Electronic mail users as of 6/96
 Networked computers as of 1/97
 Full-time faculty, 1996-97
 Medical & graduate students, 1996
 Residents & postdocs, 1996-97
 Full-time staff, 1996-97
 Nursing staff, 1996-97
 Number of beds, 1996-97

Schools of Hospital Medicine & Nursing

2,200
1,000
1,575
-
-
440
3,625
1,312
900

7,000
4,089
3,366
1,370
1,155
1,090
2,230
-
-

Help Desk

Total calls	1954
Calls per day	98
% of ITS-Med clients using Help	25%
# of callers	843
# of Yale affiliates using Web pag	400
Departments accounting for 5% or more of all calls	Internal Medicine Surgery Pediatrics Child Study Center OPS

<u>Type of call</u>	<u># of calls</u>	<u>resolved by Help Desk</u>	<u>resolved same day</u>	<u>resolved next day</u>	<u>resolved in 2 weeks</u>
New work or	327	51%	52%	60%	95%
Email/Schedu	291	90%	84%	92%	99%
Call transfer	262	99%	98%	99%	100%
PC/printer	245	59%	72%	87%	99%
Network	245	71%	77%	85%	98%
Status request	216	96%	98%	99%	100%
Info. request	155	100%	97%	99%	100%
Admin. syste	87	51%	71%	79%	97%
Move	69	23%	70%	70%	90%
Billing	66	80%	81%	88%	100%
Remote acces	66	92%	87%	90%	100%
Other	65	85%	76%	91%	98%

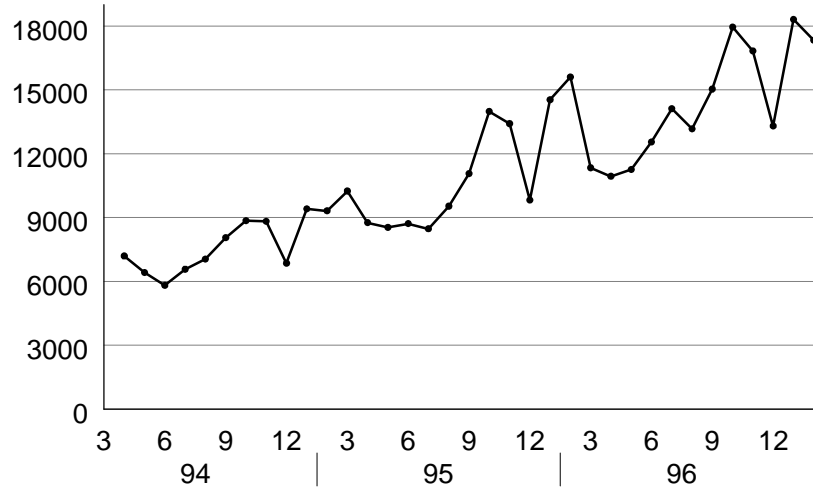
NetMenu workstations

<u>Type of application</u>	<u>Library NetMenu</u>			<u>Hospital NetMenu</u>			<u>Nursing NetMenu</u>			
	<u># of connections</u>	<u>this month</u>	<u>Feb-96</u>	<u>% change</u>	<u>this month</u>	<u>Feb-96</u>	<u>% change</u>	<u>this month</u>	<u>Feb-96</u>	<u>% change</u>
Medical Education	2,255	1,465	54%	-	-	-	-	-	-	-
Bibliographic databases & search too	9,090	8,362	9%	1,546	1540	0%	457	615	-26%	
Full text & factual databases	340	346	-2%	2,122	1838	15%	8	29	-	
Grant & research information	23	71	-68%	-	-	-	3	2	-	
Clinical assistance	7	87	-92%	35	27	30%	0	2	-	
Email/news/networks	23,854	17,520	36%	8,715	4600	89%	555	565	-2%	
Word processing & utilities	385	343	12%	1,493	1032	45%	-	-	-	
Hospital information systems	-	-	-	22,309	14862	50%	-	-	-	
Procedure recorders	-	-	-	392	357	10%	-	-	-	
Total	35,954	28,194	28%	36,612	24,256	51%	1,023	1,213	-16%	
connections per workstation	1,383	1,343	3%	398	404	-2%	512	607		

Institutional Resource Usage

MEDLINE

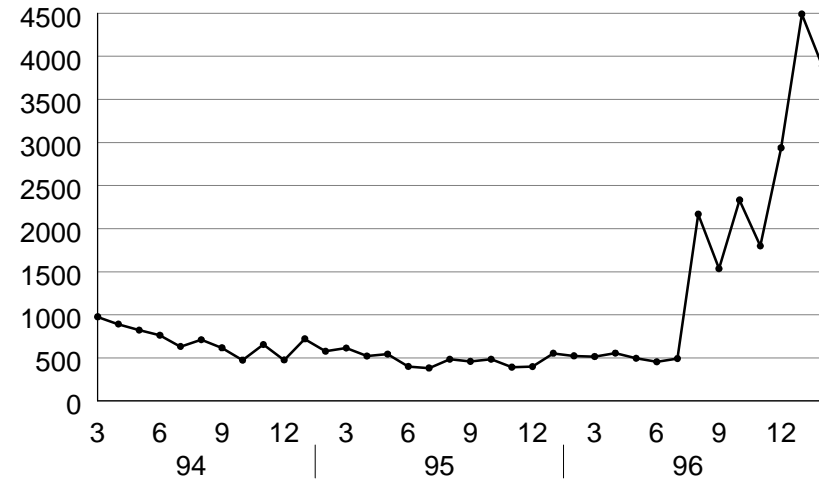
number of sessions per month



source: MEDLINE usage data

Current Contents

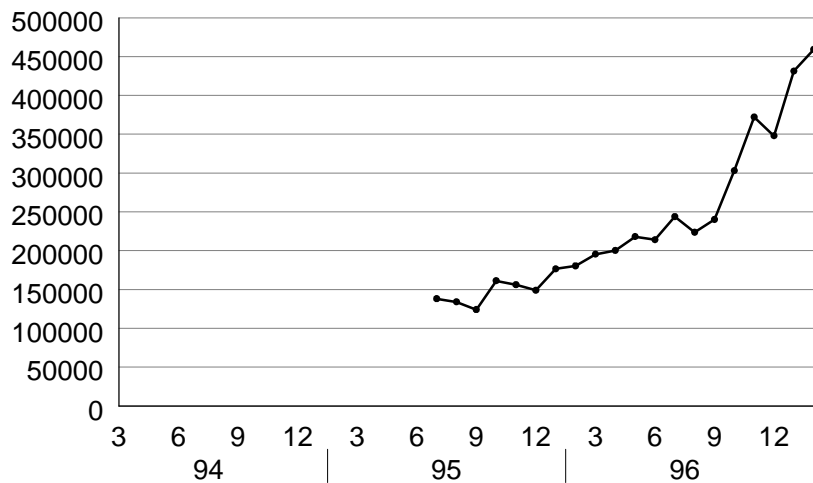
number of connections per month



source: Current Contents usage data

Medical Center Web server

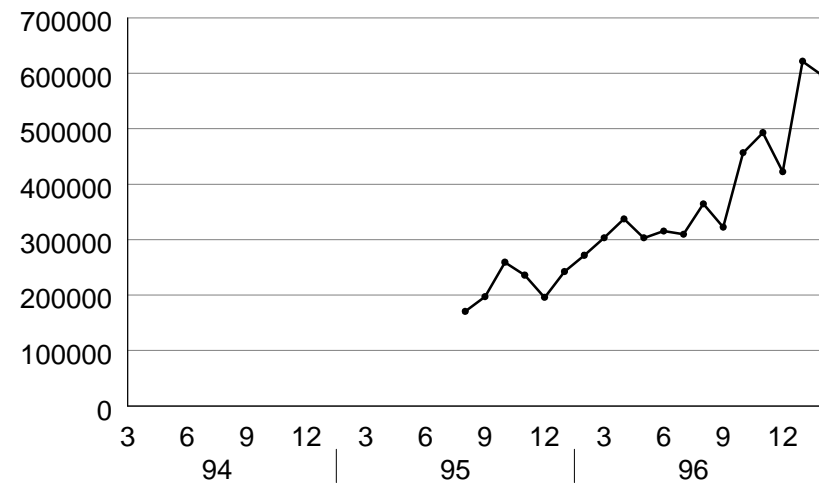
number of pages per month



source: WEB usage data

Electronic mail

number of messages per month

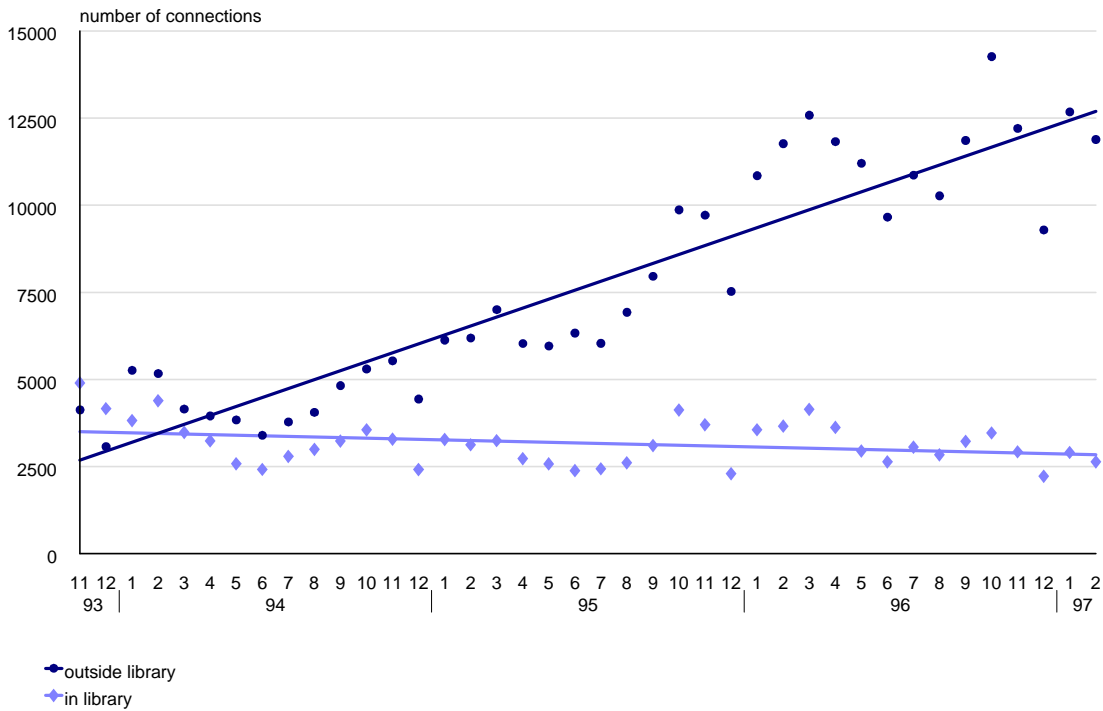


source: PMDF usage data

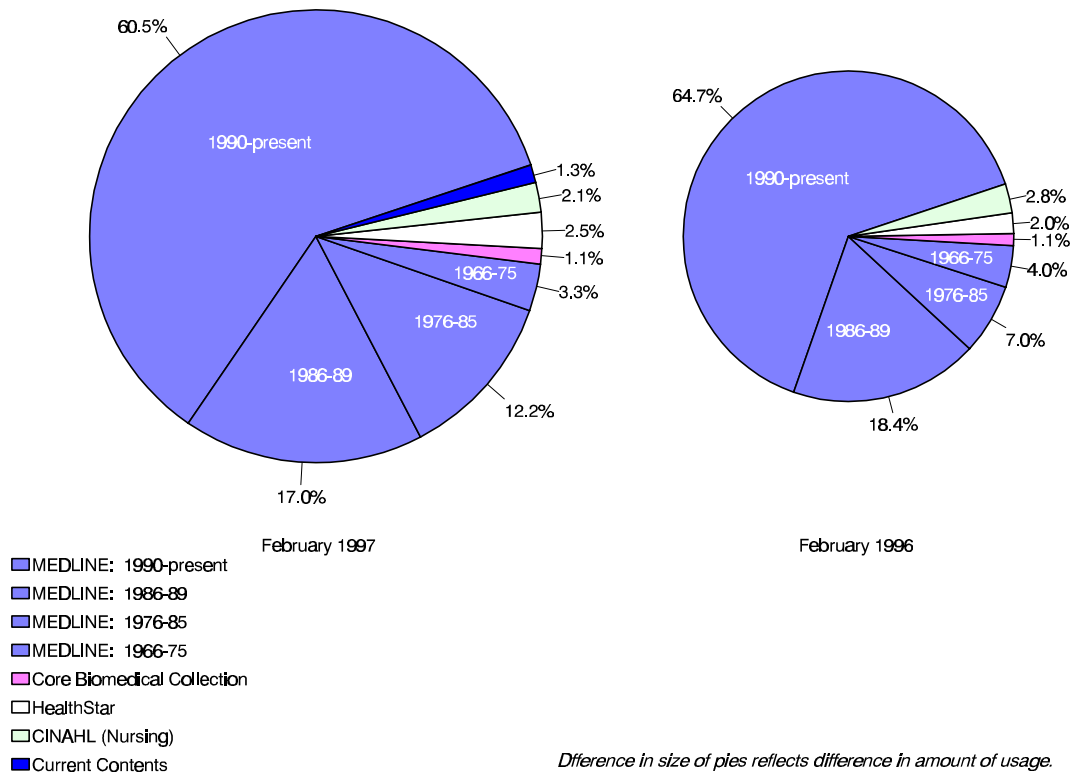
OVID Usage

OVID usage over time

includes MEDLINE, CINAHL, HealthStar, and Core Biomedical Collection

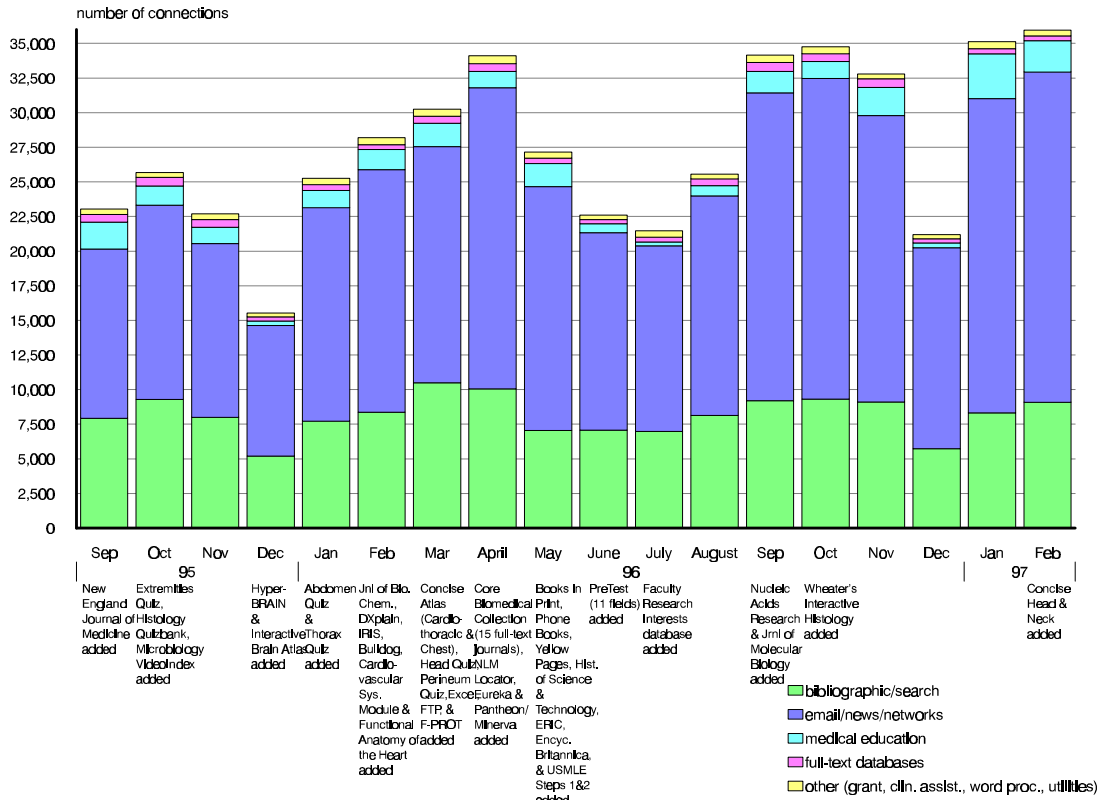


OVID usage Breakdown of databases

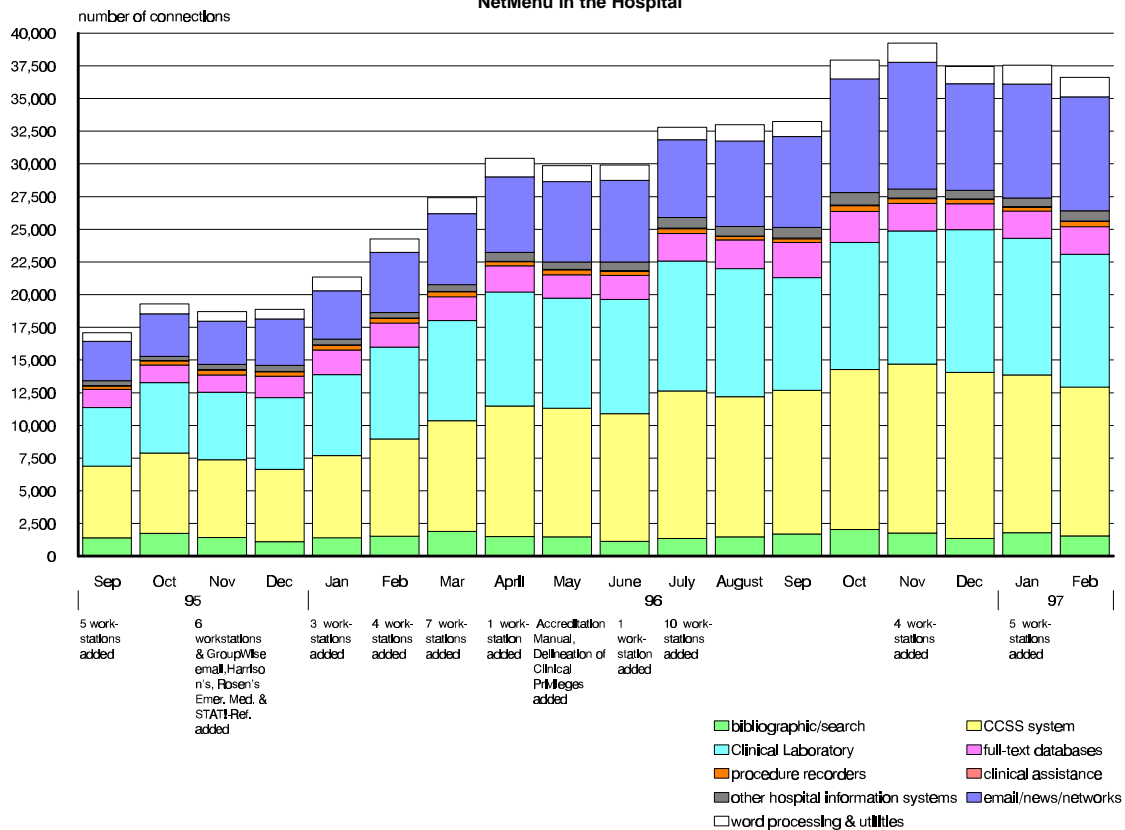


NetMenu workstation usage

NetMenu in the Medical Library



NetMenu in the Hospital



Overall usage for selected databases

	<u>Feb-96</u>	<u>Mar-96</u>	<u>Apr-96</u>	<u>May-96</u>	<u>Jun-96</u>	<u>Jul-96</u>	<u>Aug-96</u>	<u>Sep-96</u>	<u>Oct-96</u>	<u>Nov-96</u>	<u>Dec-96</u>	<u>Jan-97</u>	<u>Feb-97</u>
Summary													
Current Contents*	522	514	554	494	454	491	2167*	1534*	2331*	1798*	2,937	4,489	3,886
MEDLINE	15,599	11,338	10,935	11,259	12,549	14,114	13,163	15,035	17,947	16,825	13,296	18,307	17,329
Medical Center Web server	180,348	195,382	200,197	218,039	213,995	243,844	223,670	240,165	303,126	372,135	347,928	431,339	459,226
Electronic mail messages sent	271,489	303,190	337,167	302,991	315,220	309,517	364,477	322,377	456,571	492,880	422,342	621,590	595,748

Details: OVID

1966-75 search sets	4,485	3,398	4,280	4,264	4,314	4,447	5,243	5,101	4,805	5,091	3,823	5,349	5,818
1976-85 search sets	7,796	12,270	14,996	16,766	16,462	20,241	19,270	20,888	19,234	18,694	15,755	20,618	21,255
1986-89 search sets	20,509	17,497	21,324	24,559	23,762	30,139	27,276	30,458	29,425	27,587	23,185	31,520	29,664
1990-present search sets	72,196	56,808	67,533	72,710	78,495	90,799	79,185	100,386	106,766	96,388	76,264	102,575	105,377
Core Biomedical Collection searc	1,244	893	789	945	1,922	3,725	2,351	2,520	2,043	1,870	1,912	2,197	1,841
HealthStar search sets	2,176	1,283	2,066	966	815	946	1,077	2,488	3,945	3,709	2,129	2,301	4,321
nursing search sets	3,135	1,779	2,366	2,078	1,612	1,541	1,075	2,828	3,795	3,543	1,972	2,904	3,645
access method: telnet sessions	-	-	-	-	-	-	-	-	-	-	11,725	-	-
access method: Web sessions	-	-	-	-	-	-	-	-	-	-	-	1,381	-

Details: Current Contents

Current Contents total*	522	514	554	494	454	491	2,167	1,534	2,331	1,798	2,937	4,489	3,886
Ovid version	-	-	-	-	-	-	-	-	-	-	1,633	2,413	2,181
Basis version, interactive sessior	-	-	-	-	-	-	-	-	-	-	196	289	229
Basis version, automatic searche	-	-	-	-	-	-	-	-	-	-	1,108	1,787	1,476

*Current Contents usage includes automatic searches as of 8/96 and Ovid access as of 12/96

Medical Center Web usage report, February 1997

Top 10 pages accessed by Yale users

<u>this month</u>	<u>last month</u>
Medical Center	Medical Center
Medical Library	Medical Library
School of Medicine	School of Medicine
MedMenu	Server search
Medical Library's Internet search page	Desktop Support
Server search	MedMenu
Desktop Support	Medical Library's Internet search page
Scientific Affairs and Grant & Contract Administration	Scientific Affairs and Grant & Contract Administration
MedMenu's informational page about OVID	Library's other Yale & New Haven area Web sites
Library's other Yale & New Haven area Web sites page	Academic departments page

Top 10 pages accessed by external users

<u>this month</u>	<u>last month</u>
Center for Advanced Instructional Media	Center for Advanced Instructional Media
Medical Center page	Medical Center page
School of Medicine	School of Medicine
Server search	Server search
Medical Library	Medical Library
School of Medicine's admissions viewbook	School of Medicine's admissions viewbook
Child Study Center's Autism/PDD Clinic	Child Study Center's Autism/PDD Clinic
Emerging Infections Information Network	Academic departments page
Academic departments page	Emerging Infections Information Network
Yale Journal of Biology and Medicine	Yale-New Haven Hospital

	<u>Feb-97</u>	<u>Feb-96</u>	<u>% change</u>
Server total	459,226	180,348	155%
Who connected			
Yale	149,119	24,089	519%
other US educational institutions	53,840	33,167	62%
US government & military	3,829	2,734	40%
US commercial institutions	68,616	40,016	71%
US non-profit organizations	2,835	2,064	37%
Major online service providers	41,353	16,675	148%
International	61,467	27,164	126%
# of unique hosts connecting	49,237	27,295	80%
Medical Center	37,985	7,716	392%
Yale-New Haven Hospital	1,595	818	95%
School of Medicine	6,938	2,622	165%
School of Nursing	649	-	-
Major resources			
School's organizational chart	68	-	-
Computing page	541	161	236%
Core research facilities page	188	72	161%
Education page	374	174	115%
Emerging Infections Information Network	2,300	929	148%
Faculty Research Interests database	803	177	354%
Medical Library	12,623	2,493	406%
MedMenu	4494	750	499%
Scientific Affairs and Grant & Contract Ad	1,415	334	324%
School of Medicine application	356	683	-48%
Yale Faculty Practice	331	-	-
Service departments			
Academic Computing	155	-	-
Biomedical Communications	371	238	56%
C/AIM	5,025	4,600	9%
Center for Cell Imaging	392	184	113%
Desktop Support	1257	208	504%
Medical Administrative Systems	80	150	-47%

	<u>Feb-97</u>	<u>Feb-96</u>	<u>% change</u>
Academic Departments*			
Anesthesiology	405	252	61%
BBS	321	-	-
Boyer Center for Molecular Medicine	576	214	169%
Cancer Center	538	59	812%
Cell Biology	610	458	33%
Cellular & Molecular Physiology	250	140	79%
Child Study Center	263	-	-
Comparative Medicine	70	-	-
Dermatology	497	-	-
Diagnostic Radiology	720	165	336%
Epidemiology & Public Health	1403	799	76%
Genetics	448	512	-13%
History of Medicine	95	-	-
Immunobiology	349	-	-
Internal Medicine	344	156	121%
Laboratory Medicine	199	-	-
Neurobiology	624	175	257%
Neurology	338	226	50%
Neuroscience Program	183	-	-
Neurosurgery	119	528	-77%
Obstetrics & Gynecology	227	73	211%
Ophthalmology	534	494	8%
Orthopaedics & Rehabilitation	122	-	-
Pathology	607	-	-
Pediatrics	232	-	-
Pharmacology	331	142	133%
Physician Associate Program	429	-	-
Psychiatry	806	715	13%
Surgery	272	184	48%
Therapeutic Radiology	-	-	-

*Molecular Biochemistry & Biophysics and the Center for Medical Informatics are not listed because they reside on other servers.

Details for NetMenu Hospital usage

<u>Application</u>	<u>total # of connections</u>		
	<u>Feb-97</u>	<u>Feb-96</u>	<u>% change</u>
Hospital information systems	22309	14862	50%
CCSS	11398	7420	54%
ChartView	287	117	145%
Clinical laboratory	10138	7033	44%
Diagnostic Imaging	127	136	-7%
EPIC	132	82	61%
Surgical Pathology	227	74	207%
Bibliographic databases and search tools	1546	1540	0%
CINAHL	144	130	11%
Health Planning and Administration	55	52	6%
MEDLINE	1269	1286	-1%
Yale Library Catalog (OPAC)	78	72	8%
Word processing & utilities	1493	1032	45%
Clinical Workstation locations	66	67	-1%
Format disk	26	24	8%
Virus scan	40	44	-9%
Wordperfect	1361	897	52%
Clinical assistance	35	27	30%
Coag Advisor	35	27	30%

<u>Application</u>	<u>total # of connections</u>		
	<u>Feb-97</u>	<u>Feb-96</u>	<u>% change</u>
Full text and factual databases	2122	1838	15%
Delineation of Clinical Privileges	21	-	-
Harrison's	305	301	1%
JCAHO Accreditation Manual	26	-	-
Little Brown Handbooks	151	230	-34%
Merck Manual	86	83	4%
Micromedex	1088	723	50%
New England Journal of Medicine	193	213	-9%
Red Book on Pediatric Infections	33	26	27%
Rosen's Emergency Medicine	50	56	-11%
STAT!-Reference	106	124	-15%
YNHH Physician Phone Book	63	82	-23%
Email/news/networks	8715	4600	89%
Biomed Email	974	603	62%
GroupWise Email	1525	417	266%
Internet access	6216	3580	74%
Procedure recorders	392	357	10%
Medicine	48	53	-9%
Ob/Gyn	134	228	-41%
Surgery	210	76	176%

Details for NetMenu Medical Library usage

Application	total # of connections			Application	total # of connections			Application	total # of connections		
	Feb-97	Feb-96	% change		Feb-97	Feb-96	% change		Feb-97	Feb-96	% change
Bibliographic databases and search tools	9090	8362	9%	Full text and factual databases	340	346	-2%	Medical Education	2255	1465	54%
AIDSLINE	5	27	-81%	AIDSTrials/AIDSDrugs/DIRLINE	0	2	-100%	Abdomen Quiz	184	87	111%
Biosis	71	105	-32%	Academic Press Journals	21	-	-	Anatomic Explorer	49	43	14%
Books in Print	7	-	-	American Journal of Medicine	16	-	-	Anatomic Explorer CT	27	24	13%
CINAHL	29	35	-17%	American Journal of Obstetrics	5	-	-	Animated Embryo	30	25	20%
Current Contents	70	110	-36%	American Journal of Surgery	1	-	-	Brainstem	34	32	6%
ERIC	11	-	-	Annals of Internal Medicine	2	-	-	Brainstorm	31	33	-6%
Eureka	6	-	-	Archives of General Psychiatry	5	-	-	Breath sounds	22	9	144%
Expanded Academic Index	28	28	0%	BMJ	8	-	-	Cardiac Angio	14	29	-52%
Health Planning and Administration	10	9	11%	Britannica Online	2	-	-	Cardiac Auscultation	32	47	-32%
InfoFinder	122	191	-36%	Canadian Medical Association Journa	0	-	-	Cardiac Echo	6	21	-71%
MEDLINE	5710	5057	13%	Circulation	1	-	-	Cardiac MRI	13	10	30%
PsycINFO	130	111	17%	Electronic Journals	13	-	-	Cardiac Perfusion Imaging: SP	9	11	-18%
Science Citation Index	166	152	9%	Faculty Research Interests database	23	-	-	Cardiac Perfusion Imaging: PI	4	6	-33%
Search term lookup	6	16	-63%	FREIDA	31	36	-14%	Cardiothoracic Image Quiz	53	48	10%
Yale Library Catalog (OPAC)	2719	2521	8%	GenBank	8	13	-38%	Cardiothoracic Imaging	44	40	10%
Email/news/networks	23854	17520	36%	History of Science & Technology	24	-	-	Concise Atlas - Cardiothoracic	9	3	-
Biomed Email	12935	11589	12%	Journal of Biological Chemistry	11	7	57%	Concise Altas - Chest	8	3	-
Bulldog Access	56	56	0%	Journal of Bone & Joint Surgery	2	-	-	Concise Altas - Extremities	21	-	-
MEDINFO (Yale-New Haven gopher)	-	93	-	Journal of Clinical Investigation	1	-	-	Concise Altas - Head & Neck	120	-	-
NIH gopher	-	25	-	Journal of Molecular Biology	0	-	-	Embryo images	41	26	58%
Pantheon/Minerva	2982	-	-	JAMA	15	-	-	EPS Review	6	13	-54%
World Wide Web	7861	5466	44%	Lancet	4	-	-	Extremities Quiz	107	42	155%
YaleInfo	20	291	-93%	Legislate	2	33	-94%	Forebrain (Syracuse)	1	8	-88%
word processing & utilities (CRL)	385	343	12%	Micromedex	5	14	-64%	Gross Anatomy Review	304	180	69%
Epi Info	8	8	0%	MMWR	6	17	-65%	HARP (Histological Anatomy Rev	5	10	-50%
Excel for Windows	54	13	-	Network Entrez	4	15	-73%	Head Quiz	239	138	-
Format disk	11	8	38%	New England Journal of Medicine	10	30	-67%	Histology Quizbank	24	3	700%
FTP for Windows	10	6	-	NEXIS	69	159	-57%	Histology Video Review	4	26	-85%
Health Risk Appraisal	0	0	#DIV/0!	Nucleic Acids Research	0	-	-	HyperCELL	2	5	-60%
Virus Scanner (F-PROT)	8	7	-	OMIM/GDB	6	10	-40%	Hyperheart	15	9	67%
Wordperfect for Windows	294	204	44%	Pediatrics	20	-	-	Interactive Brain Atlas	30	27	11%
				Phone Books	13	-	-	Interactive Respiratory Physiology	7	-	-
				Science	7	-	-	KINEMAGE	4	13	-69%
				Scientific American Medicine Consul	2	10	-80%	Lazy Eye	48	16	200%
				YNHH Nursing Organization and Pra	3	-	-	MacBaby	27	60	-55%
				Grant and research information	23	71	-68%	Microbiology Quizbank	5	-	-
				Community of Science	5	-	-	Neuroanatomy Review	25	16	56%
				CT CRISP	8	36	-78%	Neuron Model: Tutorial	1	2	-50%
				IRIS	10	12	-17%	Neuron Model: Current Clamp	0	6	-100%
				Clinical assistance	7	87	-92%	Neuron Model: Voltage Clamp	1	7	-86%
				Coag Advisor	1	7	-86%	Pathology Quizbank	41	82	-50%
				Physician Data Query (PDQ)	6	27	-78%	Perineum Quiz	145	95	-
								PreTest (11 different fields)	35	-	-
								Superhead	106	117	-9%
								Thorax Quiz	83	61	36%
								USMLE Step 1	101	-	-
								USMLE Step 2	137	-	-