

Information Technology Services - Medicine
Monthly Report
May 1997

Highlights and milestones

- Outages from Administrative Systems and MAS1, 2, and 3 are now being tracked and reported.
- Online application for student admissions to the School of Medicine added using a Web interface to an Oracle database.
- Technology Evaluation and Planning created a Helpful Links Web page to catalog useful Web links to use as a supplement to Web bookmarks (<http://info.med.yale.edu/computing/techops/evaluation/resources/>).
- Technology Evaluation and Planning published an evaluation of virus protection standards for the University (<http://info.med.yale.edu/computing/techops/evaluation/virus/virus-protection.html>).
- Client Support resolved client problems significantly faster this month in three areas: administrative systems, billing queries, and new work orders.
- Use of the Core Biomedical Collection of full-text electronic journals has almost quadrupled since May 1996.
- The number of connections per public workstation has decreased slightly in both the Library (-16%) and the Hospital (-5%) since May 1996. Although the total number of connections to the public Hospital workstations has increased, the number of connections to bibliographic databases has declined by 10%.
- Use of Medline, electronic mail, and the Clinical Reporting System declined from April; the Medical Center's Web server and Current Contents saw increased usage from April to May.

Information Technology-Medicine Monthly Report

May 1997

Applications

| <u>Type of application</u> | <u>this month</u> | <u>May-96</u> | <u>% change</u> |
|------------------------------------|-------------------|---------------|-----------------|
| CINAHL | 278 | 260 | 7% |
| Core Biomedical Collection | 1,102 | 262 | 321% |
| Clinical Reporting System (CRS) | 620 | 428 | 45% |
| accesses per user per month | 8 | 7 | 23% |
| Current Contents | 3922* | 494 | 264% |
| Electronic mail (# messages sent) | 464,333 | 302,991 | 53% |
| messages per user per day | 2.9 | - | - |
| HealthSTAR | 336 | 131 | 156% |
| Medline | 16,467 | 11,259 | 46% |
| searches per active user per month | 6.2 | - | - |
| Medical Center World Wide Web | | | |
| Medical Center home page | 42,957 | 8,403 | 411% |
| Hospital home page | 1,714 | 1,142 | 50% |
| School of Medicine home page | 8,641 | 3,760 | 130% |
| Medical Library home page | 13,220 | 6,155 | 115% |

*As of 8/96, Current Contents usage includes automatic searches

Background information

| | | |
|--------------------------------------|-------|-------|
| Personal computers as of 11/96 | 2,200 | 7,000 |
| Electronic mail users as of 6/96 | 1,000 | 4,089 |
| Networked computers as of 3/97 | 1,575 | 3,625 |
| Full-time faculty, 1996-97 | - | 1,370 |
| Medical & graduate students, 1996-97 | - | 1,155 |
| Residents & postdocs, 1996-97 | 440 | 1,090 |
| Full-time staff, 1996-97 | 3,625 | 2,230 |
| Nursing staff, 1996-97 | 1,312 | - |
| Number of beds, 1996-97 | 900 | - |

Schools of Hospital Medicine & Nursing

System outages

CRS system 8 hours on May 15 due to hardware failures

Help Desk

| | change from | | <u>Type of call</u> | # of calls change from | | resolved by Help Desk change from | | resolved next day change from | |
|---|-------------------|-------------------|---------------------|---------------------------|-------------------|--------------------------------------|-------------------|----------------------------------|-------------------|
| | <u>this month</u> | <u>last month</u> | | <u>this month</u> | <u>last month</u> | <u>this month</u> | <u>last month</u> | <u>this month</u> | <u>last month</u> |
| Total calls | 2519 | -2% | PC/printer | 422 | -16% | 59% | 2% | 80% | -2% |
| Calls per day | 120 | 3% | New order | 349 | -17% | 47% | 12% | 59% | 59% |
| % of ITS-Med clients using Help Desk | 26% | 0% | Network | 340 | -25% | 75% | -3% | 81% | -4% |
| # of callers | 967 | 7% | Transfer | 312 | 20% | 99% | 0% | 99% | 0% |
| # of Yale affiliates using Web page | 496 | 6% | Info | 268 | 0% | 99% | -1% | 94% | -3% |
| # of new network connects | 80 | -4% | Email/Schedulin | 264 | -8% | 92% | -3% | 92% | 2% |
| Departments accounting for 5% or more of all calls | Internal Medicine | | Status queries | 150 | -1% | 95% | 0% | 95% | 1% |
| | Surgery | | Admin systems | 92 | -42% | 66% | 29% | 80% | 13% |
| | Pediatrics | | Billing | 72 | 7% | 81% | -1% | 60% | 9% |

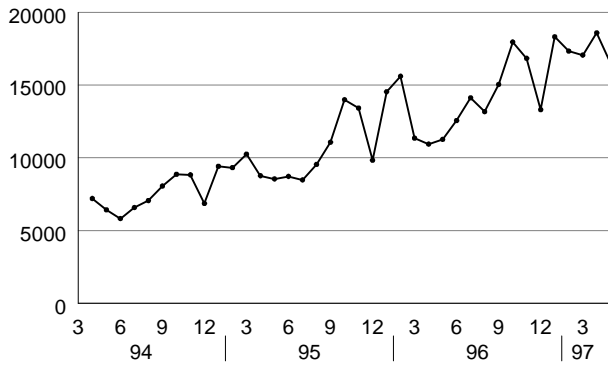
NetMenu workstations

| <u>Type of application</u> | Library NetMenu # of connections | | | Hospital NetMenu # of connections | | | Nursing NetMenu # of connections | | |
|--|-------------------------------------|---------------|-----------------|--------------------------------------|---------------|-----------------|-------------------------------------|---------------|-----------------|
| | <u>this month</u> | <u>May-96</u> | <u>% change</u> | <u>this month</u> | <u>May-96</u> | <u>% change</u> | <u>this month</u> | <u>May-96</u> | <u>% change</u> |
| Medical Education | 1,150 | 1,677 | -31% | - | - | - | - | - | - |
| Bibliographic databases & search tools | 6,046 | 7,048 | -14% | 1,322 | 1469 | -10% | 110 | 212 | -48% |
| Full text & factual databases | 252 | 380 | -34% | 2,056 | 1799 | 14% | 1 | 10 | -90% |
| Grant & research information | 10 | 49 | -80% | - | - | - | 1 | 0 | - |
| Clinical assistance | 8 | 17 | -53% | 25 | 33 | -24% | 2 | 3 | -33% |
| Email/news/networks | 20,389 | 17,612 | 16% | 9,471 | 6150 | 54% | 158 | 314 | -50% |
| Word processing & utilities | 544 | 371 | 47% | 1,505 | 1218 | 24% | - | - | - |
| Hospital information systems | - | - | - | 22,793 | 18831 | 21% | - | - | - |
| Procedure recorders | - | - | - | 486 | 371 | 31% | - | - | - |
| Total | 28,399 | 27,154 | 5% | 37,658 | 29,871 | 26% | 272 | 539 | -50% |
| connections per workstation | 1,092 | 1,293 | -16% | 392 | 415 | -5% | 136 | 270 | |

Institutional Resource Usage

MEDLINE

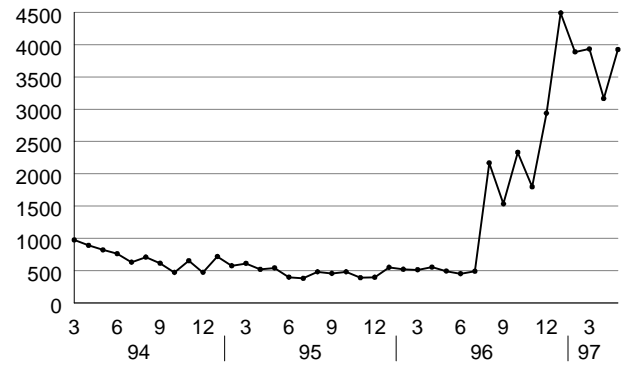
number of sessions per month



source: MEDLINE usage data

Current Contents

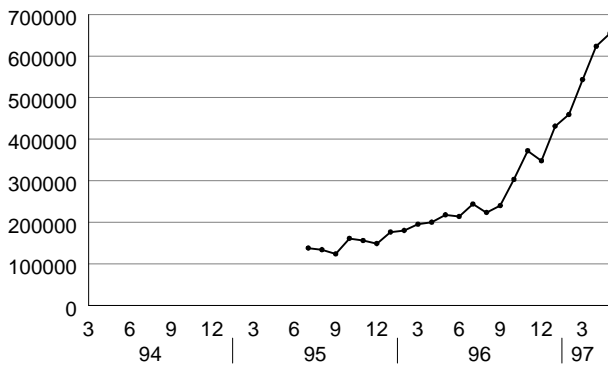
number of connections per month



source: Current Contents usage data

Medical Center Web server

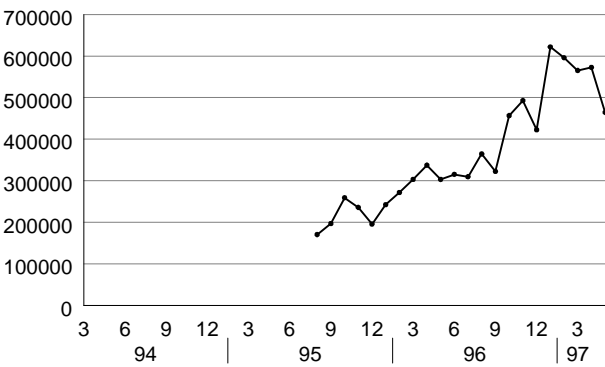
number of pages per month



source: WEB usage data

Electronic mail

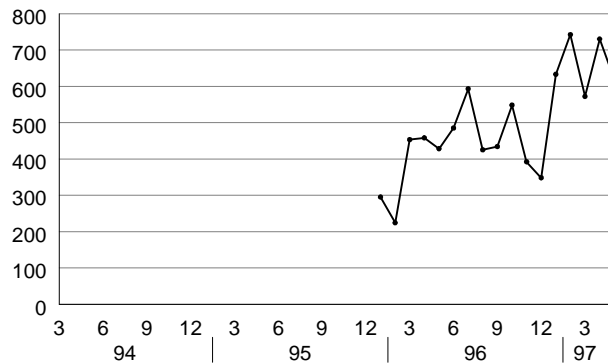
number of messages per month



source: PMDF usage data

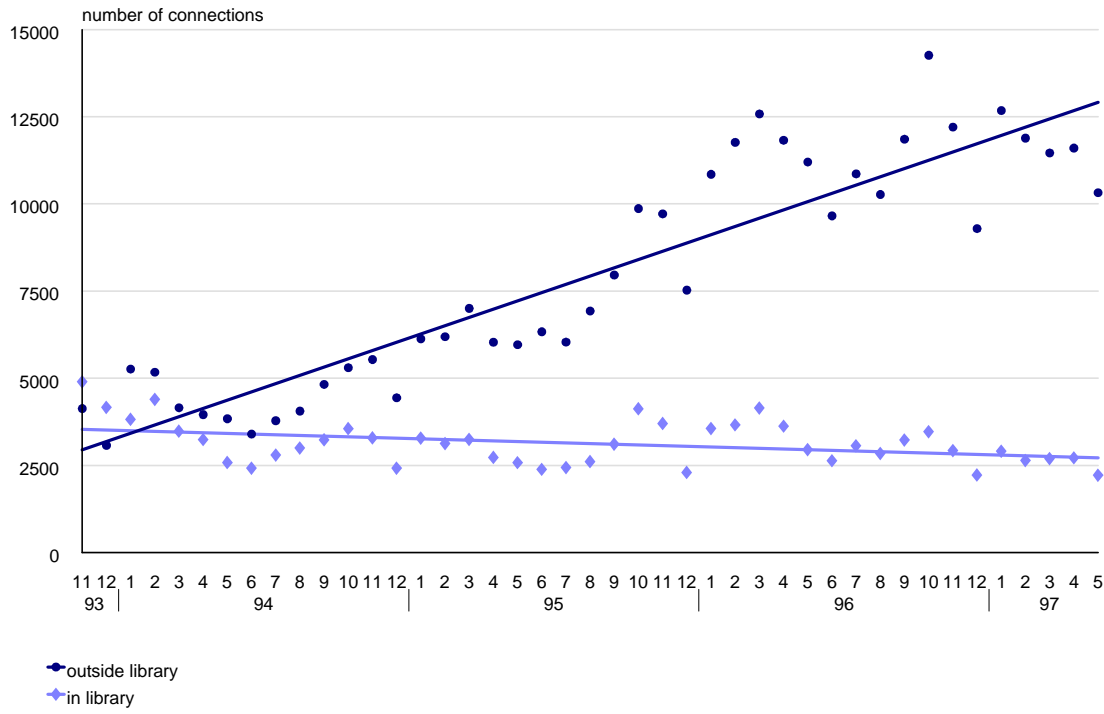
Clinical Reporting System

number of accesses per month

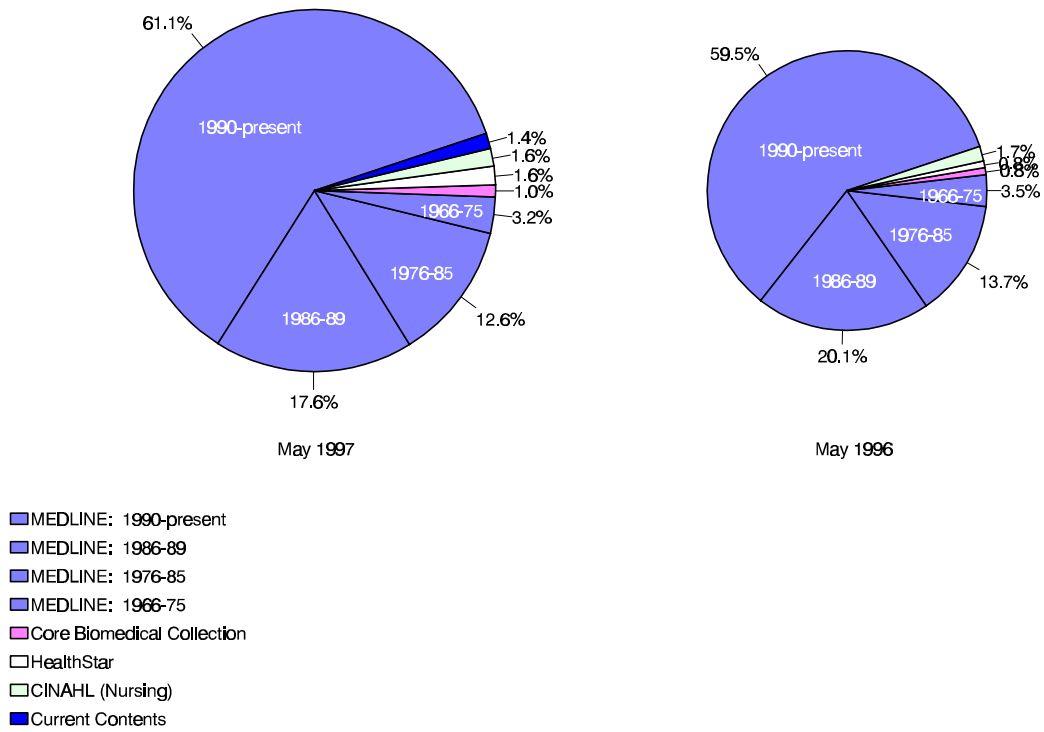


OVID usage

OVID usage over time
includes MEDLINE, CINAHL, HealthStar, and Core Biomedical Collection



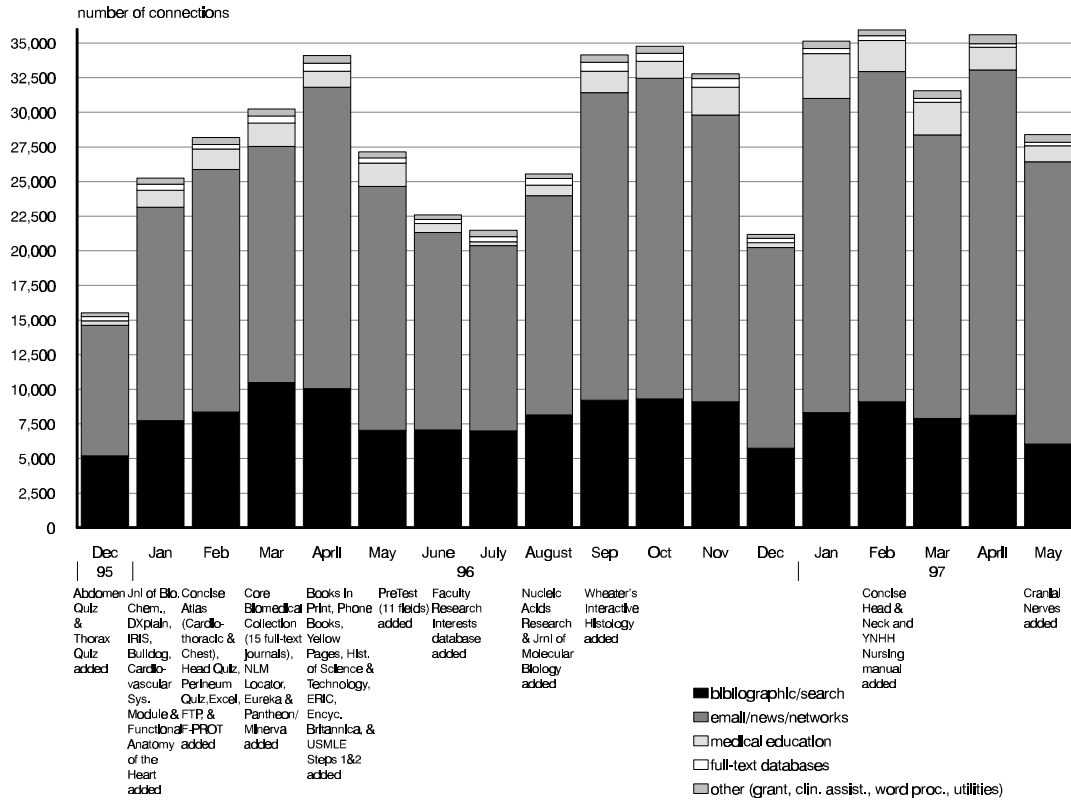
OVID usage
Breakdown of databases



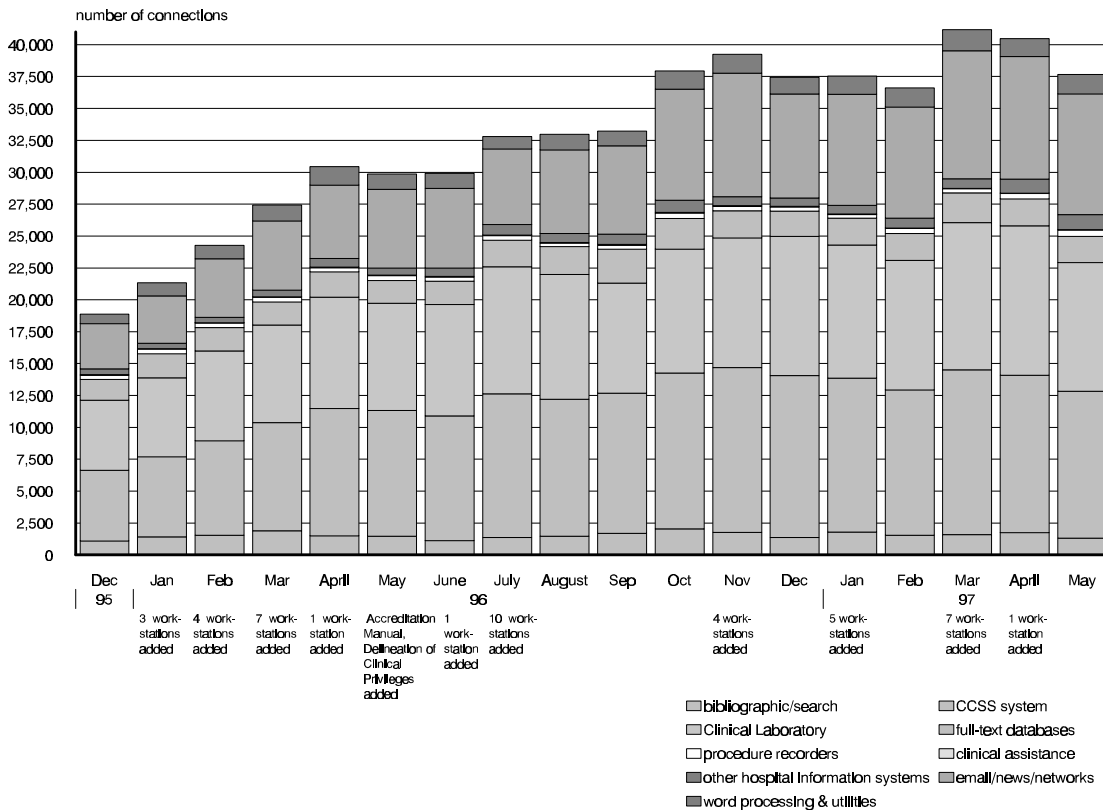
Difference in size of pies reflects difference in amount of usage.

NetMenu workstation usage

NetMenu in the Medical Library



NetMenu in the Hospital



Overall usage for selected databases

| | <u>May-96</u> | <u>Jun-96</u> | <u>Jul-96</u> | <u>Aug-96</u> | <u>Sep-96</u> | <u>Oct-96</u> | <u>Nov-96</u> | <u>Dec-96</u> | <u>Jan-97</u> | <u>Feb-97</u> | <u>Mar-97</u> | <u>Apr-97</u> | <u>May-97</u> |
|---------------------------------------|---------------|---------------|---------------|---------------|---------------|---------------|---------------|---------------|---------------|---------------|---------------|---------------|---------------|
| Summary | | | | | | | | | | | | | |
| Current Contents* | 494 | 454 | 491 | 2167* | 1534* | 2331* | 1798* | 2,937 | 4,489 | 3,886 | 3,931 | 3,165 | 3,922 |
| MEDLINE | 11,259 | 12,549 | 14,114 | 13,163 | 15,035 | 17,947 | 16,825 | 13,296 | 18,307 | 17,329 | 17,053 | 18,577 | 16,467 |
| Medical Center Web server | 218,039 | 213,995 | 243,844 | 223,670 | 240,165 | 303,126 | 372,135 | 347,928 | 431,339 | 459,226 | 543,310 | 623,284 | 654,313 |
| Electronic mail messages sent | 302,991 | 315,220 | 309,517 | 364,477 | 322,377 | 456,571 | 492,880 | 422,342 | 621,590 | 595,748 | 564,961 | 572,553 | 464,333 |
| Clinical Reporting System (CR) | 428 | 485 | 593 | 425 | 434 | 548 | 392 | 348 | 633 | 742 | 572 | 730 | 620 |

Details: OVID

| | | | | | | | | | | | | | |
|----------------------------------|--------|--------|--------|--------|---------|---------|--------|--------|---------|---------|--------|--------|---------|
| 1966-75 search sets | 4,264 | 4,314 | 4,447 | 5,243 | 5,101 | 4,805 | 5,091 | 3,823 | 5,349 | 5,818 | 5,752 | 5,530 | 5,545 |
| 1976-85 search sets | 16,766 | 16,462 | 20,241 | 19,270 | 20,888 | 19,234 | 18,694 | 15,755 | 20,618 | 21,255 | 22,001 | 21,843 | 22,084 |
| 1986-89 search sets | 24,559 | 23,762 | 30,139 | 27,276 | 30,458 | 29,425 | 27,587 | 23,185 | 31,520 | 29,664 | 30,687 | 29,999 | 30,913 |
| 1990-present search sets | 72,710 | 78,495 | 90,799 | 79,185 | 100,386 | 106,766 | 96,388 | 76,264 | 102,575 | 105,377 | 96,592 | 99,365 | 107,291 |
| Core Biomedical Collection searc | 945 | 1,922 | 3,725 | 2,351 | 2,520 | 2,043 | 1,870 | 1,912 | 2,197 | 1,841 | 1,960 | 2,152 | 1,737 |
| HealthStar search sets | 966 | 815 | 946 | 1,077 | 2,488 | 3,945 | 3,709 | 2,129 | 2,301 | 4,321 | 2,247 | 3,502 | 2,843 |
| nursing search sets | 2,078 | 1,612 | 1,541 | 1,075 | 2,828 | 3,795 | 3,543 | 1,972 | 2,904 | 3,645 | 2,703 | 3,175 | 2,740 |
| access method: telnet sessions | - | - | - | - | - | - | - | 11,725 | 15,781 | 14,668 | 13,785 | 14,558 | 12,716 |
| access method: Web sessions | - | - | - | - | - | - | - | 1,381 | 2,325 | 2,231 | 2,900 | 3,672 | 3,471 |
| access method: Z39.50 | - | - | - | - | - | - | - | | 215 | 434 | 363 | 323 | 284 |

Details: Current Contents

| | | | | | | | | | | | | | |
|------------------------------------|------------|------------|------------|--------------|--------------|--------------|--------------|--------------|--------------|--------------|--------------|--------------|--------------|
| Current Contents total* | 494 | 454 | 491 | 2,167 | 1,534 | 2,331 | 1,798 | 2,937 | 4,489 | 3,886 | 3,931 | 3,165 | 3,922 |
| Ovid version | - | - | - | - | - | - | - | 1,633 | 2,413 | 2,181 | 2,227 | 2,372 | 2,410 |
| Basis version, interactive sessior | - | - | - | - | - | - | - | 196 | 289 | 229 | 221 | 37 | 0 |
| Basis version, automatic searche | - | - | - | - | - | - | - | 1,108 | 1,787 | 1,476 | 1,483 | 756 | 1,512 |

*Current Contents usage includes automatic searches as of 8/96 and Ovid access as of 12/96

Medical Center Web usage report, May 1997

Top 10 pages accessed by Yale users

| <u>this month</u> | <u>last month</u> |
|--|--|
| Medical Center | Medical Center |
| Medical Library | Medical Library |
| School of Medicine | School of Medicine |
| Medical Library's Internet search page | MedMenu |
| MedMenu | Server search |
| Desktop Support | Desktop Support |
| Server search | Medical Library's Internet search page |
| MedMenu's informational page about OVID | MedMenu's informational page about OVID |
| Scientific Affairs and Grant & Contract Administration | Scientific Affairs and Grant & Contract Administration |
| Medical Library's other Yale sites page | Medical Library's other Yale sites page |

Top 10 pages accessed by external users

| <u>this month</u> | <u>last month</u> |
|--|--|
| Center for Advanced Instructional Media | Center for Advanced Instructional Media |
| Medical Center page | Medical Center page |
| School of Medicine | School of Medicine |
| Server search | Server search |
| School of Medicine's admissions viewbook | School of Medicine's admissions viewbook |
| Medical Library | Medical Library |
| Child Study Center's Autism/PDD Clinic | Emerging Infections Information Network |
| Academic departments page | Child Study Center's Autism/PDD Clinic |
| Yale-New Haven Hospital | Yale-New Haven Hospital |
| Emerging Infections Information Network | Academic departments page |

| | <u>May-97</u> | <u>May-96</u> | <u>% change</u> |
|--|----------------|----------------|-----------------|
| Server total | 654,313 | 218,039 | 200% |
| Who connected | | | |
| Yale | 137,505 | 39,920 | 244% |
| other US educational institutions | 63,226 | 36,967 | 71% |
| US government & military | 6,648 | 2,215 | 200% |
| US commercial institutions | 133,104 | 42,608 | 212% |
| US non-profit organizations | 9,343 | 1,971 | 374% |
| Major online service providers | 92,186 | 17,124 | 438% |
| International | 97,192 | 32,944 | 195% |
| # of unique hosts connecting | 66,688 | 32,140 | 107% |
| Medical Center | 42,957 | 8,906 | 382% |
| Yale-New Haven Hospital | 1,714 | 880 | 95% |
| School of Medicine | 8,641 | 3,227 | 168% |
| School of Nursing | 682 | - | - |
| Major resources | | | |
| School's organizational chart | 61 | 109 | -44% |
| Computing page | 561 | 191 | 194% |
| Core research facilities page | 214 | 132 | 62% |
| Education page | 328 | 284 | 15% |
| Emerging Infections Information Network | 2,615 | 1,094 | 139% |
| Medical Library | 13,220 | 6,155 | 115% |
| MedMenu | 4277 | 1029 | 316% |
| Scientific Affairs and Grant & Contract Administration | 1,414 | 257 | 450% |
| School of Medicine application | 851* | 448 | 90% |
| Yale Faculty Practice | 504 | - | - |
| Service departments | | | |
| Academic Computing | 108 | 49 | 120% |
| Biomedical Communications | 462 | 505 | -9% |
| C/AIM | 4,883 | 3,945 | 24% |
| Center for Cell Imaging | 447 | 174 | 157% |
| Desktop Support | 1541 | 95 | 1522% |
| Medical Administrative Systems | 109 | 237 | -54% |
| Systems Support | 245 | - | - |
| Technology Operations | 309 | - | - |

| | <u>May-97</u> | <u>May-96</u> | <u>% change</u> |
|-------------------------------------|---------------|---------------|-----------------|
| Academic Departments** | | | |
| Anesthesiology | 476 | 206 | 131% |
| BBS | 408 | - | - |
| Boyer Center for Molecular Medicine | 633 | 195 | 225% |
| Cancer Center | 650 | 491 | 32% |
| Cell Biology | 687 | 291 | 136% |
| Cellular & Molecular Physiology | 334 | 310 | 8% |
| Child Study Center | 577 | - | - |
| Comparative Medicine | 132 | 42 | 214% |
| Dermatology | 578 | 396 | 46% |
| Diagnostic Radiology | 679 | 233 | 191% |
| Epidemiology & Public Health | 1625 | 962 | 69% |
| Genetics | 547 | 268 | 104% |
| History of Medicine | 160 | 78 | 105% |
| Immunobiology | 384 | - | - |
| Internal Medicine | 410 | 172 | 138% |
| Laboratory Medicine | 217 | 56 | 288% |
| Neurobiology | 575 | 399 | 44% |
| Neurology | 479 | 176 | 172% |
| Neuroscience Program | 234 | - | - |
| Neurosurgery | 150 | - | - |
| Obstetrics & Gynecology | 335 | 139 | 141% |
| Ophthalmology | 588 | 359 | 64% |
| Orthopaedics & Rehabilitation | 200 | 47 | - |
| Pathology | 694 | 380 | 83% |
| Pediatrics | 321 | - | - |
| Pharmacology | 346 | 176 | 97% |
| Physician Associate Program | 475 | - | - |
| Psychiatry | 864 | 598 | 44% |
| Surgery | 378 | 167 | 126% |
| Therapeutic Radiology | 110 | - | - |

*The application was converted to an Oracle-based application on a new server this month.
The number reported for May is the number of unique users who registered for applications.

**Molecular Biochemistry & Biophysics and the Center for Medical Informatics are not listed because they reside on other servers.

Details for NetMenu Hospital usage

| <u>Application</u> | <u>total # of connections</u> | | |
|---|-------------------------------|---------------|-----------------|
| | <u>May-97</u> | <u>May-96</u> | <u>% change</u> |
| Hospital information systems | 22793 | 18831 | 21% |
| CCSS | 11515 | 9854 | 17% |
| ChartView | 461 | 109 | 323% |
| Clinical laboratory | 10092 | 8405 | 20% |
| Diagnostic Imaging | 193 | 150 | 29% |
| EPIC | 370 | 195 | 90% |
| Surgical Pathology | 162 | 118 | 37% |
| Bibliographic databases and search tools | 1322 | 1469 | -10% |
| CINAHL | 68 | 121 | -44% |
| Health Planning and Administration | 28 | 60 | -53% |
| MEDLINE | 1179 | 1207 | -2% |
| Yale Library Catalog (OPAC) | 47 | 81 | -42% |
| Word processing & utilities | 1505 | 1218 | 24% |
| Clinical Workstation locations | 53 | 85 | -38% |
| Format disk | 38 | 35 | 9% |
| Virus scan | 42 | 32 | 31% |
| Wordperfect | 1372 | 1066 | 29% |
| Clinical assistance | 25 | 33 | -24% |
| Coag Advisor | 25 | 33 | -24% |

| <u>Application</u> | <u>total # of connections</u> | | |
|--|-------------------------------|---------------|-----------------|
| | <u>May-97</u> | <u>May-96</u> | <u>% change</u> |
| Full text and factual databases | 2056 | 1799 | 14% |
| Delineation of Clinical Privileges | 17 | - | - |
| Harrison's | 310 | 340 | -9% |
| JCAHO Accreditation Manual | 23 | - | - |
| Little Brown Handbooks | 159 | 186 | -15% |
| Merck Manual | 71 | 101 | -30% |
| Micromedex | 1092 | 655 | 67% |
| New England Journal of Medicine | 152 | 244 | -38% |
| Red Book on Pediatric Infections | 44 | 29 | 52% |
| Rosen's Emergency Medicine | 44 | 45 | -2% |
| STAT!-Reference | 87 | 127 | -31% |
| YNHH Physician Phone Book | 57 | 72 | -21% |
| Email/news/networks | 9471 | 6150 | 54% |
| Biomed Email | 666 | 665 | 0% |
| GroupWise Email | 2026 | 761 | 166% |
| Internet access | 6779 | 4724 | 44% |
| Procedure recorders | 486 | 371 | 31% |
| Medicine | 75 | 80 | -6% |
| Ob/Gyn | 89 | 175 | -49% |
| Surgery | 322 | 116 | 178% |

Details for NetMenu Medical Library usage

| Application | total # of connections | | | Application | total # of connections | | | Application | total # of connections | | |
|---|------------------------|--------------|-------------|--|------------------------|-------------|-------------|------------------------------------|------------------------|--------|----------|
| | May-97 | May-96 | % change | | May-97 | May-96 | % change | | May-97 | May-96 | % change |
| Bibliographic databases and search tools | 6046 | 7048 | -14% | Full text and factual databases | 252 | 380 | -34% | Brainstem Quiz | 33 | - | - |
| AIDSLINE | 14 | 14 | 0% | Academic Press Journals | 13 | - | - | Brainstorm | 105 | 181 | -42% |
| Biosis | 45 | 72 | -38% | American Journal of Medicine | 6 | 15 | -60% | Breath sounds | 3 | 18 | -83% |
| Books in Print | 3 | 24 | -88% | American Journal of Obstetrics | 1 | - | - | Cardiac Angio | 3 | 15 | -80% |
| CINAHL | 10 | 17 | -41% | American Journal of Surgery | 4 | 6 | -33% | Cardiac Auscultation | 8 | 14 | -43% |
| Current Contents | 25 | 72 | -65% | Annals of Internal Medicine | 2 | 1 | 100% | Cardiac Echo | 7 | 6 | 17% |
| ERIC | 1 | 4 | -75% | Archives of General Psychiatry | 0 | 2 | -100% | Cardiac MRI | 5 | 9 | -44% |
| Eureka | 8 | 8 | 0% | BMJ | 1 | 6 | -83% | Cardiac Perfusion Imaging: SP | 2 | 8 | -75% |
| Expanded Academic Index | 15 | 19 | -21% | Britannica Online | 8 | 3 | 167% | Cardiac Perfusion Imaging: PI | 1 | 9 | -89% |
| Health Planning and Administration | 3 | 13 | -77% | Canadian Medical Association Journal | 4 | 0 | - | Cardiothoracic Image Quiz | 15 | 9 | 67% |
| InfoFinder | 73 | 233 | -69% | Circulation | 1 | 2 | -50% | Cardiothoracic Imaging | 3 | 8 | -63% |
| MEDLINE | 3840 | 4161 | -8% | Electronic Journals | 7 | - | - | Concise Atlas - Cardiothoracic | 3 | 4 | -25% |
| PsycINFO | 55 | 129 | -57% | Faculty Research Interests database | 10 | - | - | Concise Atlas - Chest | 3 | 1 | 200% |
| Science Citation Index | 90 | 164 | -45% | FREIDA | 25 | 62 | -60% | Concise Atlas - Extremities | 3 | - | - |
| Search term lookup | 2 | 12 | -83% | GenBank | 5 | 7 | -29% | Concise Atlas - Head & Neck | 8 | - | - |
| Yale Library Catalog (OPAC) | 1862 | 2106 | -12% | History of Science & Technology | 10 | 15 | -33% | Cranial Nerves | 10 | - | - |
| Email/news/networks | 20389 | 17612 | 16% | Journal of Biological Chemistry | 5 | 16 | -69% | Embryo images | 21 | 49 | -57% |
| Biomed Email | 10489 | 10713 | -2% | Journal of Bone & Joint Surgery | 0 | 1 | -100% | EPS Review | 4 | 8 | -50% |
| Bulldog Access | 80 | 95 | -16% | Journal of Clinical Investigation | 1 | 3 | -67% | Extremities Quiz | 14 | 10 | 40% |
| Pantheon/Minerva | 2429 | 250 | 872% | Journal of Molecular Biology | 2 | - | - | Forebrain (Syracuse) | 8 | 7 | 14% |
| World Wide Web | 7365 | 6532 | 13% | JAMA | 5 | 6 | -17% | Gross Anatomy Review | 20 | 50 | -60% |
| YaleInfo | 26 | 0 | - | Lancet | 2 | 4 | -50% | HARP (Histological Anatomy Review) | 4 | 18 | -78% |
| word processing & utilities (CRL) | 544 | 371 | 47% | Legislate | 3 | 2 | 50% | Head and Neuroanatomy Quiz | 47 | 17 | 176% |
| Epi Info | 29 | 13 | 123% | Micromedex | 8 | 5 | 60% | Histology Quizbank | 6 | 33 | -82% |
| Excel for Windows | 23 | 20 | 15% | MMWR | 9 | 3 | 200% | Histology Video Review | 5 | 11 | -55% |
| Format disk | 8 | 10 | -20% | Network Entrez | 15 | 3 | 400% | HyperCELL | 1 | 8 | -88% |
| FTP for Windows | 31 | 0 | - | New England Journal of Medicine | 14 | 24 | -42% | Hyperheart | 3 | 5 | -40% |
| Health Risk Appraisal | 1 | 1 | 0% | NEXIS | 55 | 105 | -48% | Interactive Brain Atlas | 12 | 52 | -77% |
| Virus Scanner (F-PROT) | 18 | 15 | 20% | Nucleic Acids Research | 1 | - | - | Interactive Respiratory Physiology | 8 | 20 | -60% |
| Wordperfect for Windows | 434 | 312 | 39% | OMIM/GDB | 0 | 6 | -100% | KINEMAGE | 6 | 9 | -33% |
| Grant and research information | 10 | 49 | -80% | Pediatrics | 3 | 6 | -50% | Lazy Eye | 7 | 11 | -36% |
| Community of Science | 2 | - | - | Phone Books | 11 | 50 | -78% | MacBaby | 9 | 34 | -74% |
| CT CRISP | 2 | 25 | -92% | Science | 15 | 10 | 50% | Microbiology Quizbank | 91 | 137 | -34% |
| IRIS | 6 | 8 | -25% | Scientific American Medicine Consult | 3 | 3 | 0% | Neuroanatomy Review | 20 | 26 | -23% |
| Clinical assistance | 8 | 17 | -53% | YNHH Nursing Organization and Practic | 3 | - | - | Neuron Model: Tutorial | 2 | 27 | -93% |
| Coag Advisor | 4 | 1 | 300% | Medical Education | 1150 | 1677 | -31% | Neuron Model: Current Clamp | 0 | 11 | -100% |
| Physician Data Query (PDQ) | 4 | 5 | -20% | Abdomen Quiz | 55 | 45 | 22% | Neuron Model: Voltage Clamp | 2 | 8 | -75% |
| | | | | Anatomic Explorer | 17 | 32 | -47% | Pathology Quizbank | 248 | 507 | -51% |
| | | | | Anatomic Explorer CT | 18 | 36 | -50% | Perineum Quiz | 7 | 9 | -22% |
| | | | | Animated Embryo | 12 | 24 | -50% | PreTest (11 different fields) | 81 | 70 | 16% |
| | | | | Brainstem | 23 | 43 | -47% | Superhead | 8 | 12 | -33% |
| | | | | | | | | Thorax Quiz | 17 | 11 | 55% |
| | | | | | | | | USMLE Step 1 | 118 | 33 | 258% |
| | | | | | | | | USMLE Step 2 | 40 | 13 | 208% |
| | | | | | | | | Wheater's Interactive Histology | 4 | - | - |