

# **Information Technology Services - Medicine**

## **Monthly Report**

### **July 1997**

#### **Highlights and milestones**

- Usage of AS/400 applications and information about new network installations have been added to the monthly report.
- Use of the Clinical Reporting System is 17% lower than last July.
- Connections to the Library's NetMenu workstations increased by 65% from last July, due to increased use of the Web, Pantheon/Minerva, and Medline.
- The Clinical Workstations had 20% fewer connections per workstation, due primarily to flat growth in CCSS connections despite the addition of 31 workstations.
- Use of the Help Desk increased this month again, receiving 14% more calls than last month. The Help Desk now receives 23% more calls per day than it did in January.
- Compared to June, in July the Help Desk received more requests for information (28% increase), order status queries (31%), reports of problems with electronic mail and scheduling applications (31%), call transfers (40%), and reports of problems with administrative systems (63%, due primarily to an increase in calls about the Bullet System).

# Information Technology-Medicine Monthly Report

July 1997

## Applications

<u>Type of application</u>	<u>this month</u>	<u>Jul-96</u>	<u>% change</u>
AS/400 applications	11,815	-	-
CINAHL	295	226	31%
Core Biomedical Collection	1,241	553	124%
Clinical Reporting System (CRS)	490	593	-17%
accesses per user per month	7	8	-11%
Current Contents	3777*	491	266%
Electronic mail (# messages sent)	384,559	309,517	24%
messages per user per day	2.0	2.0	-
HealthSTAR	254	139	83%
MEDLINE	17,333	14,114	23%
searches per active user per mon	6.8	6.3	-
Medical Center World Wide Web			
Medical Center home page	48,644	6,437	656%
Hospital home page	1,902	811	135%
School of Medicine home page	10,087	3,502	188%
Medical Library home page	15,641	7,069	121%

\*As of 8/96, Current Contents usage includes automatic searches

## Background information

Personal computers as of 11/96	2,200	7,000
Electronic mail users as of 7/97	1,000	5,492
Networked computers as of 7/97	1,575	3,868
Full-time faculty, 1996-97	-	1,370
Medical & graduate students, 1996-97	-	1,155
Residents & postdocs, 1996-97	440	1,090
Full-time staff, 1996-97	3,625	2,230
Nursing staff, 1996-97	1,312	-
Number of beds, 1996-97	900	-

## Schools of Hospital Medicine & Nursing

2,200	7,000
1,000	5,492
1,575	3,868
-	1,370
-	1,155
440	1,090
3,625	2,230
1,312	-
900	-

## System outages

none

## Help Desk

	change from		<u>Type of call</u>	# of calls change from		resolved by Help Desk change from		resolved next day change from	
	<u>this month</u>	<u>last month</u>		<u>this month</u>	<u>last month</u>	<u>this month</u>	<u>last month</u>	<u>this month</u>	<u>last month</u>
Total calls	3159	14%	New order	523	3%	50%	2%	71%	0%
Calls per day	144	9%	PC/printer	410	-6%	98%	63%	89%	1%
% of ITS-Med clients using Help I	28%	4%	Network	398	3%	95%	22%	88%	-1%
# of callers	1073	4%	Info	377	28%	99%	-1%	95%	-5%
# of Yale affiliates using Web page	557	15%	Call transfer	337	40%	97%	-3%	100%	3%
			Status queries	308	31%	99%	11%	95%	8%
Departments accounting for 5% or more of all calls			Email/Schedulir	296	31%	96%	-2%	91%	-7%
	Internal Medicine		Admin systems	134	63%	96%	12%	88%	21%
	Surgery		Billing	58	0%	89%	14%	73%	-13%
	Office of Professional Services								
	Pediatrics								

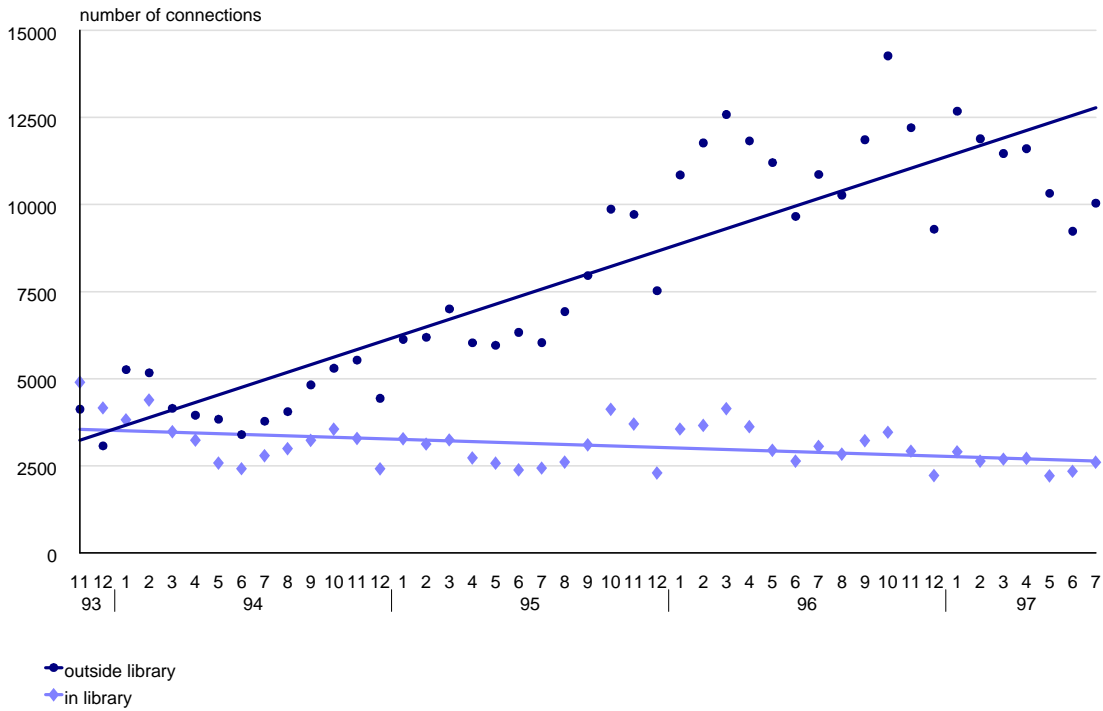
## Network installations

	change from		NetMenu workstations			Library NetMenu			Hospital NetMenu		
	<u>this month</u>	<u>last month</u>	<u>Type of application</u>	<u>this month</u>	<u>Jul-96</u>	<u>% change</u>	<u>this month</u>	<u>Jul-96</u>	<u>% change</u>		
# of new network connects	88	115%	Medical Education	382	276	38%	-	-	-		
median days from order to install	46	10%	Bibliographic databases & sear	9,427	6,989	35%	1,422	1360	5%		
days for Telecom install	26	24%	Full text & factual databases	288	367	-22%	2,543	2105	21%		
days for Desktop Support instal	19	0%	Grant & research information	15	16	-6%	-	-	-		
			Clinical assistance	8	15	-47%	36	51	-29%		
			Email/news/networks	24,706	13,390	85%	9,944	5928	68%		
			Word processing & utilities	551	424	30%	1,292	949	36%		
			Hospital information systems	-	-	-	21,867	22043	-1%		
			Procedure recorders	-	-	-	429	351	22%		
			<b>Total</b>	<b>35,377</b>	<b>21,477</b>	<b>65%</b>	<b>37,533</b>	<b>32,787</b>	<b>14%</b>		
			connections per workstation	1,361	1,023	33%	361	449	-20%		

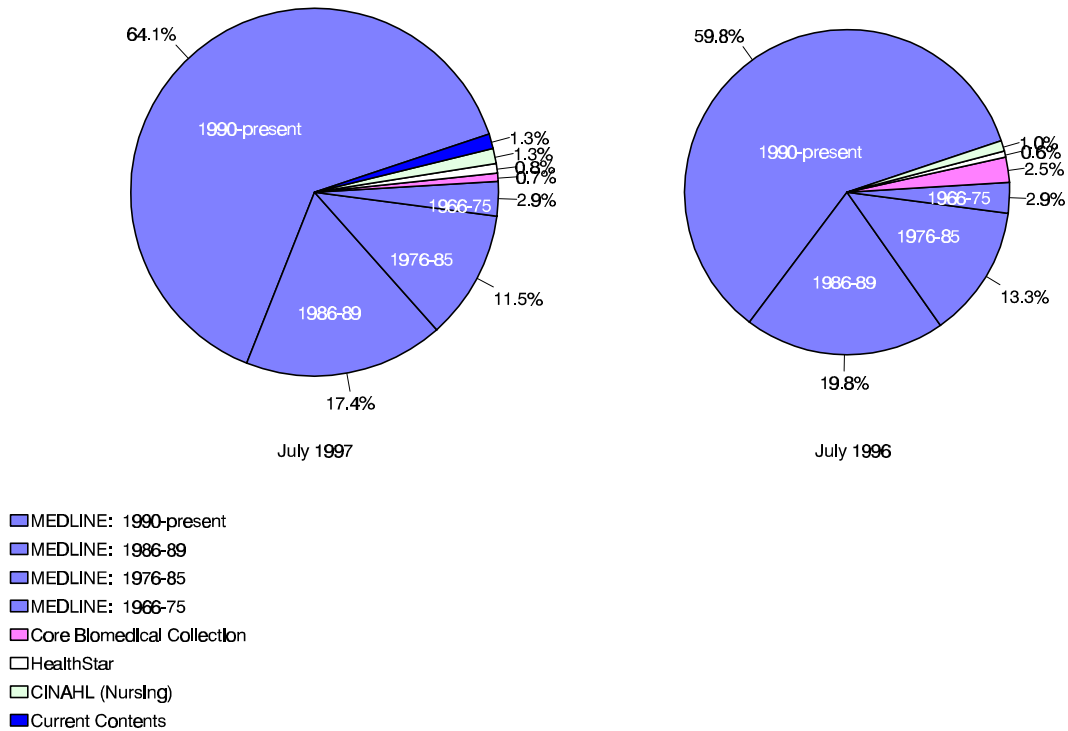


# OVID usage

OVID usage over time  
includes MEDLINE, CINAHL, HealthStar, and Core Biomedical Collection



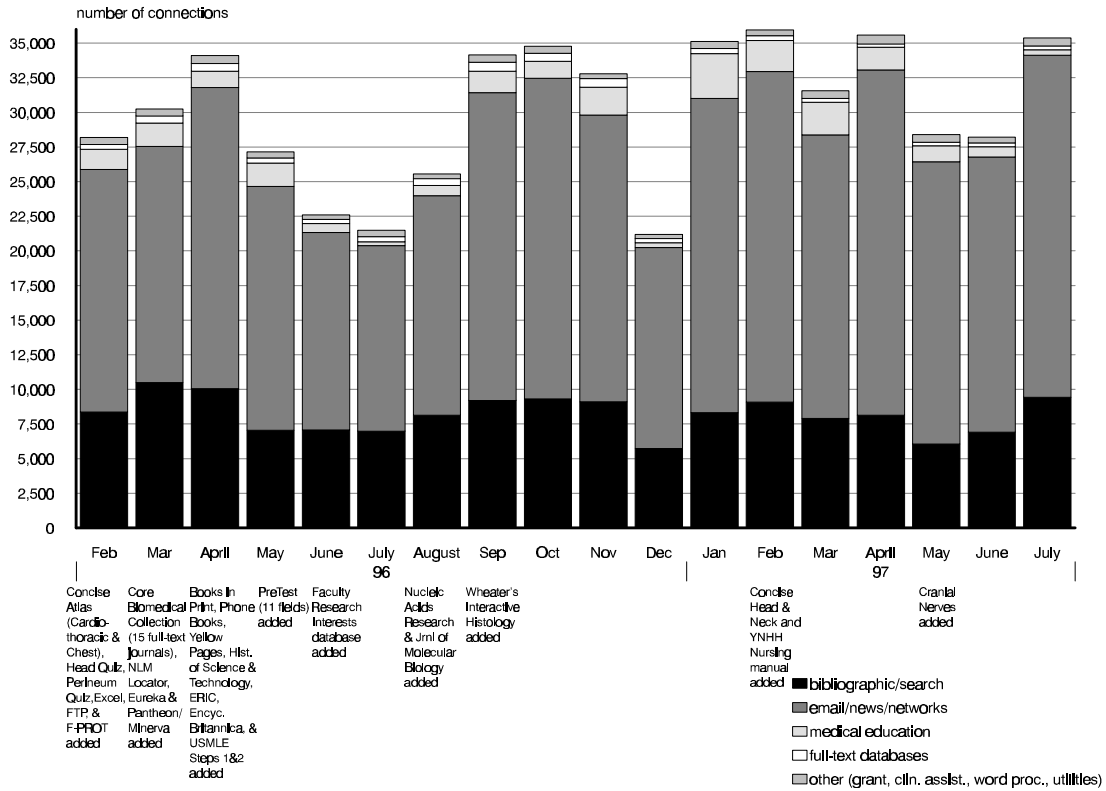
OVID usage  
Breakdown of databases



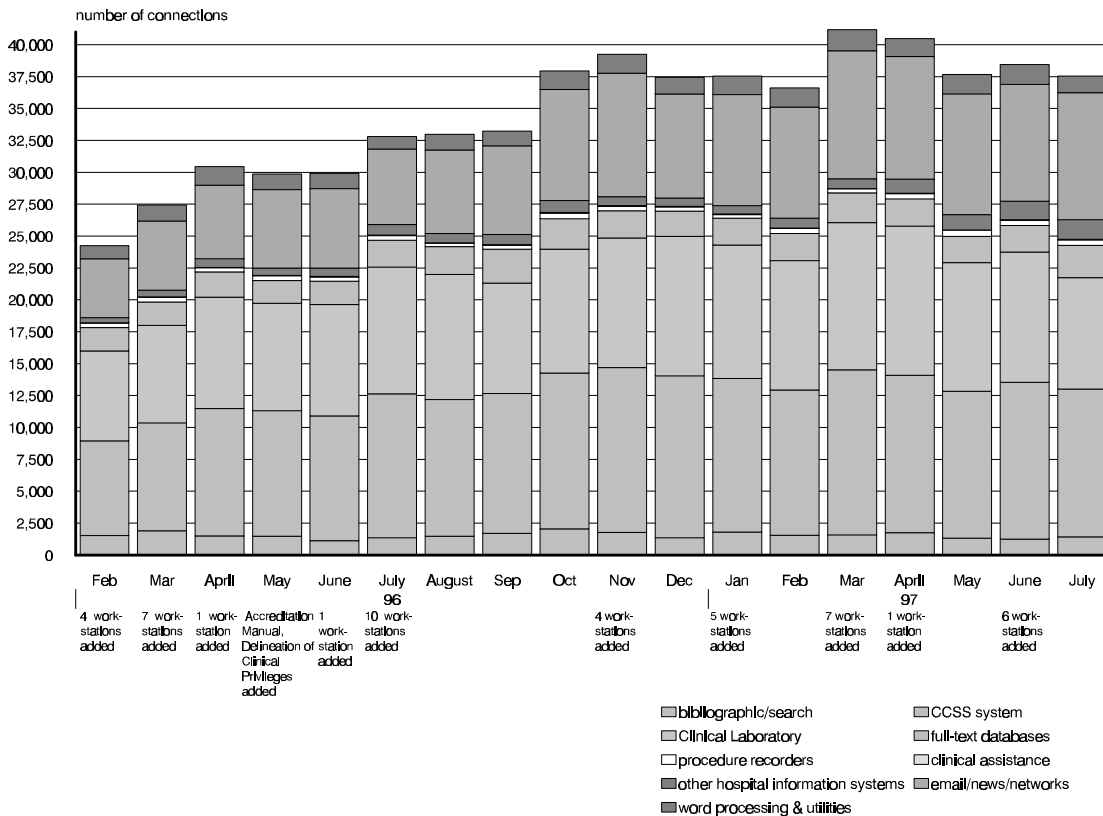
*Difference in size of pies reflects difference in amount of usage.*

# NetMenu workstation usage

## NetMenu in the Medical Library



## NetMenu in the Hospital



# Overall usage for selected databases

	<u>Jul-96</u>	<u>Aug-96</u>	<u>Sep-96</u>	<u>Oct-96</u>	<u>Nov-96</u>	<u>Dec-96</u>	<u>Jan-97</u>	<u>Feb-97</u>	<u>Mar-97</u>	<u>Apr-97</u>	<u>May-97</u>	<u>Jun-97</u>	<u>Jul-97</u>
<b>Summary</b>													
AS/400 applications	-	-	-	-	-	-	-	-	-	-	-	-	11,815
Clinical Reporting System (C	593	425	434	548	392	348	633	742	572	730	620	551	490
Current Contents*	491	2167*	1534*	2331*	1798*	2,937	4,489	3,886	3,931	3,165	3,922	3,173	3,777
OVID databases	14,114	13,163	15,035	17,947	16,825	13,296	18,307	17,329	17,053	18,577	16,467	15,948	17,333
Medical Center Web server	243,844	223,670	240,165	303,126	372,135	347,928	431,339	459,226	543,310	623,284	654,313	604,198	682,546
Electronic mail messages sent	309,517	364,477	322,377	456,571	492,880	422,342	621,590	595,748	564,961	572,553	464,333	364,215	384,559

## Details: AS/400 applications

Animal Protocols	-	-	-	-	-	-	-	-	-	-	-	-	14
Business Management Systems r	-	-	-	-	-	-	-	-	-	-	-	-	13
Clinical Information	-	-	-	-	-	-	-	-	-	-	-	-	26
Diagnostic Laboratory maint.	-	-	-	-	-	-	-	-	-	-	-	-	379
Faculty Panorama	-	-	-	-	-	-	-	-	-	-	-	-	60
Financial Affairs monthly report	-	-	-	-	-	-	-	-	-	-	-	-	6
Grants and Contracts menu	-	-	-	-	-	-	-	-	-	-	-	-	92
Human Protocols	-	-	-	-	-	-	-	-	-	-	-	-	34
Human Resources main menu	-	-	-	-	-	-	-	-	-	-	-	-	2,922
Human Resources menu	-	-	-	-	-	-	-	-	-	-	-	-	250
Physician Associate Program	-	-	-	-	-	-	-	-	-	-	-	-	8
Space Inventory System	-	-	-	-	-	-	-	-	-	-	-	-	82
Student Affairs sign-on	-	-	-	-	-	-	-	-	-	-	-	-	1
Support Services main menu	-	-	-	-	-	-	-	-	-	-	-	-	408
Yale Animal Care and Use Com	-	-	-	-	-	-	-	-	-	-	-	-	142
Yale Animal Resource Center ap	-	-	-	-	-	-	-	-	-	-	-	-	48
Other	-	-	-	-	-	-	-	-	-	-	-	-	7,330

## Details: Current Contents

<b>Current Contents total*</b>	<b>491</b>	<b>2,167</b>	<b>1,534</b>	<b>2,331</b>	<b>1,798</b>	<b>2,937</b>	<b>4,489</b>	<b>3,886</b>	<b>3,931</b>	<b>3,165</b>	<b>3,922</b>	<b>3,173</b>	<b>3,777</b>
Ovid version	-	-	-	-	-	1,633	2,413	2,181	2,227	2,372	2,410	2,082	2,270
Basis version, automatic search	-	-	-	-	-	1,108	1,787	1,476	1,483	756	1,512	1,091	1,507

\*Current Contents usage includes automatic searches as of 8/96 and Ovid access as of 12/96

## Details: OVID

1966-75 search sets	4,447	5,243	5,101	4,805	5,091	3,823	5,349	5,818	5,752	5,530	5,545	4,678	5,165
1976-85 search sets	20,241	19,270	20,888	19,234	18,694	15,755	20,618	21,255	22,001	21,843	22,084	17,707	20,593
1986-89 search sets	30,139	27,276	30,458	29,425	27,587	23,185	31,520	29,664	30,687	29,999	30,913	29,454	31,317
1990-present search sets	90,799	79,185	100,386	106,766	96,388	76,264	102,575	105,377	96,592	99,365	107,291	104,569	115,069
Core Biomedical Collection sear	3,725	2,351	2,520	2,043	1,870	1,912	2,197	1,841	1,960	2,152	1,737	1,818	1,249
HealthStar search sets	946	1,077	2,488	3,945	3,709	2,129	2,301	4,321	2,247	3,502	2,843	1,825	1,514
nursing search sets	1,541	1,075	2,828	3,795	3,543	1,972	2,904	3,645	2,703	3,175	2,740	2,596	2,358
access method: telnet sessions	-	-	-	-	-	11,725	15,781	14,668	13,785	14,558	12,716	11,825	12,688
access method: Web sessions	-	-	-	-	-	1,381	2,325	2,231	2,900	3,672	3,471	3,847	4,323
access method: Z39.50	-	-	-	-	-	-	215	434	363	323	284	280	327

# Medical Center Web usage report, July 1997

## Top 10 pages accessed by Yale users

<u>this year</u>	<u>last year</u>
Medical Center	Medical Library
Medical Library	Medical Center
MedMenu	Server search
School of Medicine	School of Medicine
Medical Library's Internet search page	Medical Library's Internet search page
Desktop Support	MedMenu
Server search	Medical Library's other Yale sites page
Scientific Affairs and Grant & Contract Administration	Medical Library's Internet resources pages
Medical Library's Selected Internet Resources	Academic departments page
Medical Library's other Yale sites page	Index of Web pages

## Top 10 pages accessed by external users

<u>this year</u>	<u>last year</u>
Center for Advanced Instructional Media	Center for Advanced Instructional Media
School of Medicine	Medical Center page
Medical Center page	School of Medicine
School of Medicine's admissions viewbook	Server search
Medical Library	School of Medicine's admissions view
Academic departments page	Medical Library
Child Study Center's Autism/PDD Clinic	Yale Journal of Biology and Medicine
Yale-New Haven Hospital	Child Study Center's Autism/PDD Clinic
Epidemiology & Public Health	Academic departments page
Medical Library's Selected Internet Resources	Epidemiology & Public Health

	<u>Jul-97</u>	<u>Jul-96</u>	<u>% change</u>
<b>Server total</b>	<b>682,546</b>	<b>243,844</b>	<b>180%</b>
<b>Who connected</b>			
Yale	137,228	31,991	<b>329%</b>
other US educational institutions	80,369	40,093	<b>100%</b>
US government & military	10,099	3,597	<b>181%</b>
US commercial institutions	149,396	54,667	<b>173%</b>
US non-profit organizations	6,845	2,318	<b>195%</b>
Major online service providers	74,287	22,145	<b>235%</b>
International	98,489	35,865	<b>175%</b>
<b># of unique hosts connecting</b>	<b>67,448</b>	<b>35,609</b>	<b>89%</b>
<b>Medical Center</b>	<b>48,644</b>	<b>6,437</b>	<b>656%</b>
<b>Yale-New Haven Hospital</b>	<b>1,902</b>	<b>811</b>	<b>135%</b>
<b>School of Medicine</b>	<b>10,087</b>	<b>3,502</b>	<b>188%</b>
<b>School of Nursing</b>	<b>788</b>	<b>284</b>	<b>177%</b>
<b>Major resources</b>			
School's organizational chart	34	113	<b>-70%</b>
Computing page	711	200	<b>256%</b>
Core research facilities page	201	153	<b>31%</b>
Education page	238	321	<b>-26%</b>
Emerging Infections Information Network	1,923	774	<b>148%</b>
Medical Library	15,641	7,069	<b>121%</b>
MedMenu	7391	1093	<b>576%</b>
Scientific Affairs and Grant & Contract Ad	1,271	306	<b>315%</b>
School of Medicine application	951*	830	<b>3%</b>
Yale Faculty Practice	542	-	-
<b>Service departments</b>			
Academic Computing	92	48	<b>92%</b>
Biomedical Communications	396	374	<b>6%</b>
C/AIM	4,520	4,321	<b>5%</b>
Center for Cell Imaging	353	145	<b>143%</b>
Copy Center	58	-	-
Desktop Support	1614	94	<b>1617%</b>
Help Desk	202	-	-
Systems Support	172	-	-
Technology Operations	302	-	-

\*The application was converted to an Oracle-based application on a new server this month.  
The number reported for May is the number of unique users who registered for applications.

	<u>Jul-97</u>	<u>Jul-96</u>	<u>% change</u>
<b>Academic Departments**</b>			
Anesthesiology	398	203	<b>96%</b>
BBS	762	-	-
Boyer Center for Molecular Medicine	635	224	<b>183%</b>
Cancer Center	608	303	<b>101%</b>
Cell Biology	785	268	<b>193%</b>
Cellular & Molecular Physiology	313	164	<b>91%</b>
Child Study Center	535	-	-
Comparative Medicine	106	35	<b>203%</b>
Dermatology	502	315	<b>59%</b>
Diagnostic Radiology	626	273	<b>129%</b>
Epidemiology & Public Health	1823	970	<b>88%</b>
Genetics	493	217	<b>127%</b>
History of Medicine	96	66	<b>45%</b>
Immunobiology	352	-	-
Internal Medicine	454	205	<b>121%</b>
Laboratory Medicine	369	51	<b>624%</b>
Neurobiology	541	361	<b>50%</b>
Neurology	402	165	<b>144%</b>
Neuroscience Program	360	64	-
Neurosurgery	132	-	-
Obstetrics & Gynecology	235	295	<b>-20%</b>
Ophthalmology	475	325	<b>46%</b>
Orthopaedics & Rehabilitation	175	56	-
Pathology	879	358	<b>146%</b>
Pediatrics	274	-	-
Pharmacology	328	130	<b>152%</b>
Physician Associate Program	705	-	-
Psychiatry	789	571	<b>38%</b>
Surgery	333	166	<b>101%</b>
Therapeutic Radiology	75	-	-

\*\*Molecular Biochemistry & Biophysics and the Center for Medical Informatics are not listed because they reside on other servers.

## Details for NetMenu Hospital usage

<u>Application</u>	<u>total # of connections</u>		
	<u>Jul-97</u>	<u>Jul-96</u>	<u>% change</u>
<b>Hospital information systems</b>	<b>21867</b>	<b>22043</b>	<b>-1%</b>
CCSS	11581	11273	3%
ChartView	480	213	125%
Clinical laboratory	8736	9947	-12%
Diagnostic Imaging	185	173	7%
EPIC	673	274	146%
Surgical Pathology	212	163	30%
<b>Bibliographic databases and search tools</b>	<b>1422</b>	<b>1360</b>	<b>5%</b>
CINAHL	82	106	-23%
Health Planning and Administration	34	33	3%
MEDLINE	1231	1128	9%
Yale Library Catalog (OPAC)	75	93	-19%
<b>Word processing &amp; utilities</b>	<b>1292</b>	<b>949</b>	<b>36%</b>
Clinical Workstation locations	70	93	-25%
Format disk	32	27	19%
Virus scan	27	12	125%
Wordperfect	1163	817	42%
<b>Clinical assistance</b>	<b>36</b>	<b>51</b>	<b>-29%</b>
Coag Advisor	36	51	-29%

<u>Application</u>	<u>total # of connections</u>		
	<u>Jul-97</u>	<u>Jul-96</u>	<u>% change</u>
<b>Full text and factual databases</b>	<b>2543</b>	<b>2105</b>	<b>21%</b>
Delineation of Clinical Privileges	19	57	-
Harrison's	348	395	-12%
JCAHO Accreditation Manual	26	51	-
Little Brown Handbooks	207	194	7%
Merck Manual	74	124	-40%
Micromedex	1473	706	109%
New England Journal of Medicine	175	223	-22%
Red Book on Pediatric Infections	37	63	-41%
Rosen's Emergency Medicine	61	109	-44%
STAT!-Reference	71	111	-36%
YNHH Physician Phone Book	52	55	-5%
<b>Email/news/networks</b>	<b>9944</b>	<b>5928</b>	<b>68%</b>
Biomed Email	936	797	17%
GroupWise Email	2277	675	237%
Internet access	6731	4456	51%
<b>Procedure recorders</b>	<b>429</b>	<b>351</b>	<b>22%</b>
ED	49	-	-
Medicine	96	91	5%
Ob/Gyn	186	209	-11%
Surgery	98	51	92%



Details for NetMenu Medical Library usage

Application	total # of connections			Application	total # of connections			Application	total # of connections		
	Jul-97	Jul-96	% change		Jul-97	Jul-96	% change		Jul-97	Jul-96	% change
<b>Bibliographic databases and search tools</b>	<b>9427</b>	<b>6989</b>	<b>35%</b>	<b>Full text and factual databases</b>	<b>288</b>	<b>367</b>	<b>-21%</b>	Breath sounds	13	7	80%
AIDSLINE	7	28	-75%	Academic Press Journals	5	-	-	Cardiac Angio	3	10	-66%
Biosis	38	30	26%	American Journal of Medicine	14	12	15%	Cardiac Auscultation	11	12	-4%
Books in Print	10	17	-39%	American Journal of Obstetrics	5	-	-	Cardiac Echo	7	5	38%
CINAHL	7	9	-23%	American Journal of Surgery	2	4	-43%	Cardiac MRI	2	3	-23%
Current Contents	38	81	-53%	Annals of Internal Medicine	5	13	-65%	Cardiac Perfusion Imaging: SP	0	1	-
ERIC	8	6	34%	Archives of General Psychiatry	5	7	-34%	Cardiac Perfusion Imaging: PI	0	6	-100%
Eureka	8	7	15%	BMJ	0	7	-100%	Cardiothoracic Image Quiz	11	4	187%
Expanded Academic Index	15	15	0%	Britannica Online	8	0	-	Cardiothoracic Imaging	6	7	-18%
Health Planning and Administration	3	6	-43%	Canadian Medical Association Journal	2	8	-	Concise Atlas - Cardiothoracic	0	2	-100%
InfoFinder	100	102	-2%	Circulation	2	2	15%	Concise Atlas - Chest	1	0	-
MEDLINE	6352	4099	55%	Electronic Journals	8	-	-	Concise Atlas - Extremities	1	-	-
PsycINFO	131	100	31%	Faculty Research Interests database	31	25	24%	Concise Atlas - Head & Neck	0	-	-
Science Citation Index	76	101	-25%	FREIDA	47	61	-23%	Cranial Nerves	3	-	-
Search term lookup	2	5	-54%	GenBank	0	14	-100%	Embryo images	17	6	187%
Yale Library Catalog (OPAC)	2633	2284	15%	History of Science & Technology	15	4	273%	EPS Review	5	6	-23%
<b>Email/news/networks</b>	<b>24705.89</b>	<b>13390</b>	<b>85%</b>	Journal of Biological Chemistry	8	19	-58%	Extremities Quiz	8	2	302%
Biomed Email	6923	5562	24%	Journal of Bone & Joint Surgery	0	2	-100%	Forebrain (Syracuse)	5	5	-8%
Bulldog Access	29	12	139%	Journal of Clinical Investigation	0	3	-100%	Gross Anatomy Review	10	8	29%
Pantheon/Minerva	3694	738	400%	Journal of Molecular Biology	3	-	-	HARP (Histological Anatomy Review	2	1	130%
World Wide Web	14043	7072	99%	JAMA	6	5	15%	Head and Neuroanatomy Quiz	11	-	-
YaleInfo	17	0	-	Lancet	6	8	-28%	Head Quiz	5	5	-8%
<b>word processing &amp; utilities (CRL)</b>	<b>551</b>	<b>424</b>	<b>30%</b>	Legislate	0	2	-	Histology Quizbank	1	3	-62%
Epi Info	2	6	-62%	Micromedex	6	8	-28%	Histology Video Review	2	2	15%
Excel for Windows	23	25	-8%	MMWR	3	10	-66%	HyperCELL	2	0	-
Format disk	9	13	-29%	Network Entrez	1	6	-81%	Hyperheart	7	5	38%
FTP for Windows	17	0	-	New England Journal of Medicine	8	11	-27%	Interactive Brain Atlas	13	3	321%
Health Risk Appraisal	2	2	15%	NEXIS	46	63	-27%	Interactive Respiratory Physiology	3	1	244%
Virus Scanner (F-PROT)	9	10	-8%	Nucleic Acids Research	0	-	-	KINEMAGE	2	2	15%
Wordperfect for Windows	488	368	33%	OMIM/GDB	11	7	64%	Lazy Eye	6	0	-
<b>Grant and research information</b>	<b>15</b>	<b>16</b>	<b>-7%</b>	Pediatrics	15	6	149%	MacBaby	7	6	15%
Annual grant deadlines	1	3	-62%	Phone Books	9	24	-62%	Microbiology Quizbank	2	2	15%
Community of Science	5	-	-	Science	13	24	-47%	Neuroanatomy Review	7	10	-31%
CT CRISP	0	7	-100%	Scientific American Medicine Consult	0	9	-100%	Neuron Model: Tutorial	2	4	-43%
IRIS	9	4	130%	YNHH Nursing Organization and Practic	5	-	-	Neuron Model: Current Clamp	0	8	-100%
<b>Clinical assistance</b>	<b>8</b>	<b>15</b>	<b>-46%</b>	<b>Medical Education</b>	<b>382</b>	<b>276</b>	<b>39%</b>	Neuron Model: Voltage Clamp	0	6	-100%
Coag Advisor	1	0	-	Abdomen Quiz	26	10	164%	Pathology Quizbank	1	5	-77%
Physician Data Query (PDQ)	7	10	-31%	Anatomic Explorer	16	13	24%	Perineum Quiz	5	1	359%
				Anatomic Explorer CT	2	2	15%	PreTest (11 different fields)	10	12	-14%
				Animated Embryo	8	7	15%	Superhead	5	6	-23%
				Brainstem	10	9	15%	Thorax Quiz	6	5	15%
				Brainstem Quiz	6	-	-	USMLE Step 1	37	15	145%
				Brainstorm	5	7	-34%	USMLE Step 2	68	42	61%
								Wheater's Interactive Histology	0	-	-