

**Information Technology Services - Medicine**  
**Monthly Report**  
**August 1997**

**Highlights and milestones**

- Electronic mail usage now includes statistics from the email.med.yale.edu server and estimated usage within Microsoft Mail post offices.
- The Help Desk received fewer calls than last month in all categories except billing inquiries and reports of network problems.
- Turnaround time and Help Desk resolution rates are now being calculated based on all work orders rather than only those that were completed that month. Using this new calculation for both June and July, fewer work orders were resolved within 48 hours in every category except information requests and call transfers.
- Every application that is tracked was used more this year than last.
- Use of the NetMenu workstations is approximately equal to last year's use. The Clinical workstations received 10% more usage this August than last.

# Information Technology-Medicine Monthly Report

August 1997

## Applications

<u>Type of application</u>	<u>this month</u>	<u>Aug-96</u>	<u>% change</u>
AS/400 applications	8,173	-	-
CINAHL	247	165	50%
Core Biomedical Collection	1,014	463	119%
Clinical Reporting System (CRS)	495	425	16%
accesses per user per month	7	7	-8%
Current Contents	3,181	2,167	47%
Electronic mail (# messages sent)*	546,536	364,477	50%
messages per user per day	2.8	2.3	21%
HealthSTAR	241	170	42%
MEDLINE	14,301	13,163	9%
searches per active user per mor	6.2	5.8	6%
Medical Center World Wide Web			
Medical Center home page	48,644	7,069	588%
Hospital home page	1,902	804	137%
School of Medicine home page	10,087	3,165	219%
Medical Library home page	15,641	6,300	148%

## Background information

Personal computers as of 11/96
Electronic mail users as of 7/97
Networked computers as of 7/97
Full-time faculty, 1996-97
Medical & graduate students, 1996-97
Residents & postdocs, 1996-97
Full-time staff, 1996-97
Nursing staff, 1996-97
Number of beds, 1996-97

## Schools of Hospital Medicine & Nursing

2,200	7,000
1,000	5,492
1,575	3,868
-	1,370
-	1,155
440	1,090
3,625	2,230
1,312	-
900	-

## System outages

none

\*Usage for email.med.yale.edu and estimated usage within MS Mail post offices was added to total usage as of 8/97.

Help Desk	change from		<u>Type of call</u>	# of calls change from		resolved by Help Desk change from		resolved next day change from	
	<u>this month</u>	<u>last month</u>		<u>this month</u>	<u>last month</u>	<u>this month</u>	<u>last month</u>	<u>this month</u>	<u>last month</u>
Total calls	2943	-7%	New order	478	-9%	30%	-	25%	-34%
Calls resolved	77%	-	Network	428	8%	63%	-	76%	-8%
Calls per day	140	-3%	PC/printer	384	-6%	40%	-	77%	-6%
% of ITS-Med clients using Help I	28%	0%	Info	342	-9%	80%	-	96%	2%
# of callers	1148	7%	Call transfer	314	-7%	77%	-	100%	0%
# of Yale affiliates using Web page	498	-11%	Status queries	261	-15%	70%	-	81%	-19%
Departments accounting for 5% or more of all calls			Email/Scheduli	251	-15%	68%	-	83%	-7%
Internal Medicine			Admin systems	101	-25%	50%	-	74%	-14%
Surgery			Billing	83	43%	60%	-	44%	-29%
EPH									
Office of Professional Services									

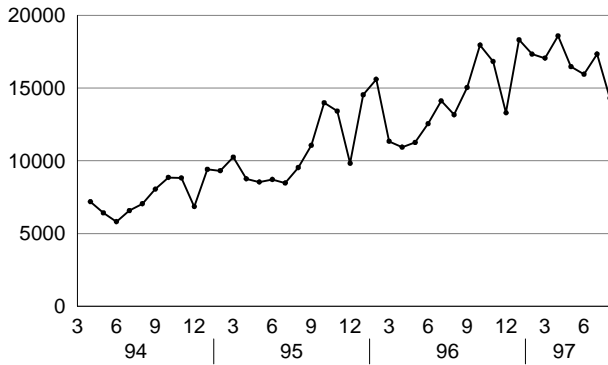
## Network installations

	change from		NetMenu workstations			Library NetMenu			Hospital NetMenu		
	<u>this month</u>	<u>last month</u>	<u>Type of application</u>	<u>this month</u>	<u>Aug-96</u>	<u>% change</u>	<u>this month</u>	<u>Aug-96</u>	<u>% change</u>		
# of new network connects	34	-61%	Medical Education	700	747	-6%	-	-	-		
median days from order to install	50	9%	Bibliographic databases & sea	6,585	8,140	-19%	1,447	1475	-2%		
days for Telecom install	16	-16%	Full text & factual databases	251	486	-48%	2,607	2056	27%		
days for Desktop Support instal	28	8%	Grant & research information	6	36	-83%	-	-	-		
			Clinical assistance	3	9	-67%	34	43	-21%		
			Email/news/networks	18,402	15,849	16%	10,330	6546	58%		
			Word processing & utilities	52	291	-82%	1,404	1226	15%		
			Hospital information systems	-	-	-	20,118	21238	-5%		
			Procedure recorders	-	-	-	348	268	30%		
			<b>Total</b>	<b>25,999</b>	<b>25,558</b>	<b>2%</b>	<b>36,288</b>	<b>32,852</b>	<b>10%</b>		
			connections per workstation	1,000	1,217	-18%	349	396	-12%		

# Institutional Resource Usage

## MEDLINE

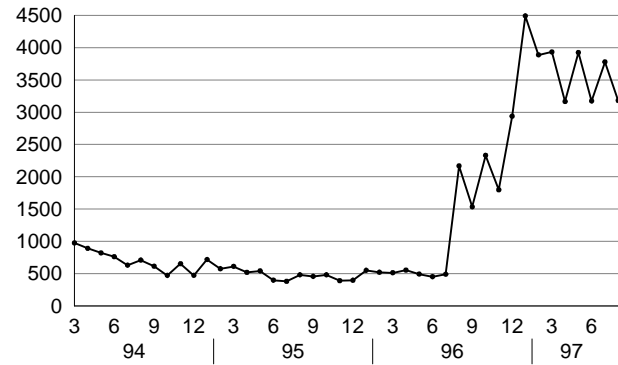
number of sessions per month



source: MEDLINE usage data

## Current Contents

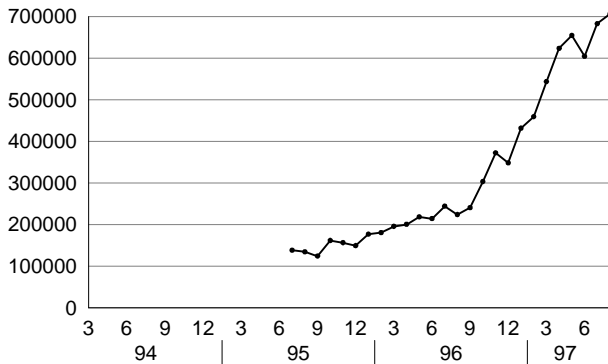
number of connections per month



source: Current Contents usage data

## Medical Center Web server

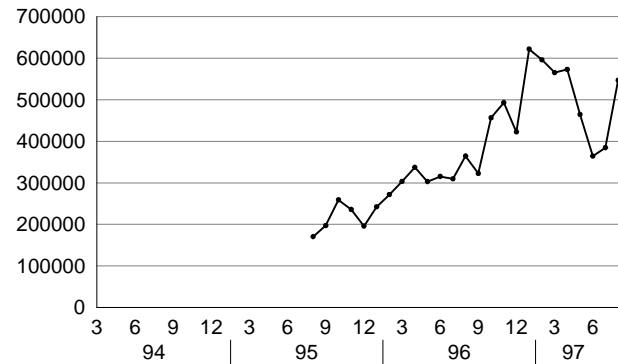
number of pages per month



source: WEB usage data

## Electronic mail

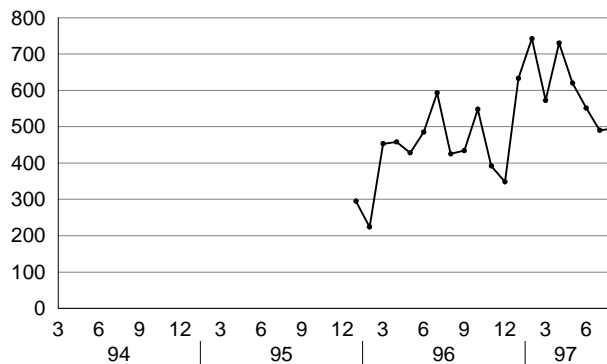
number of messages per month



source: PMDF usage data and (as of 8/97) email.med.yale.edu smtp stats

## Clinical Reporting System

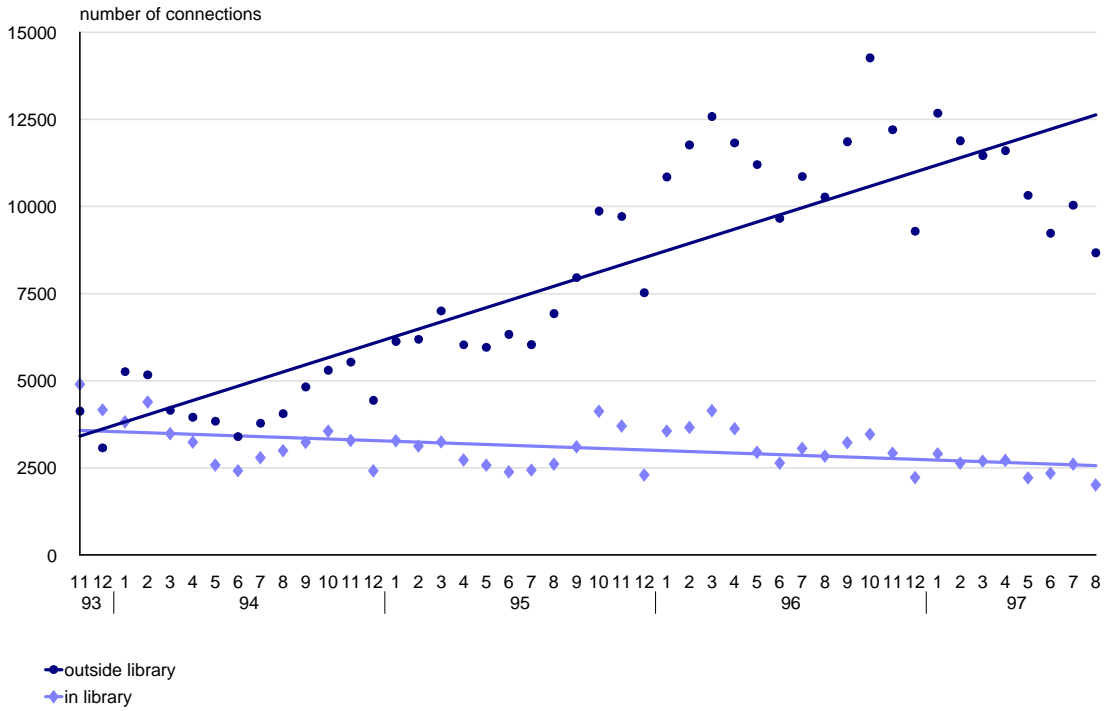
number of accesses per month



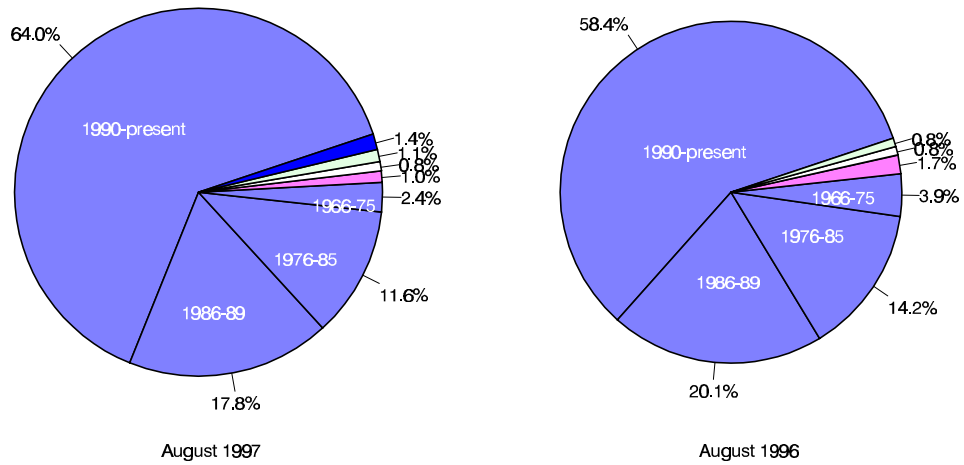
# OVID usage

## OVID usage over time

includes MEDLINE, CINAHL, HealthStar, and Core Biomedical Collection



## OVID usage Breakdown of databases

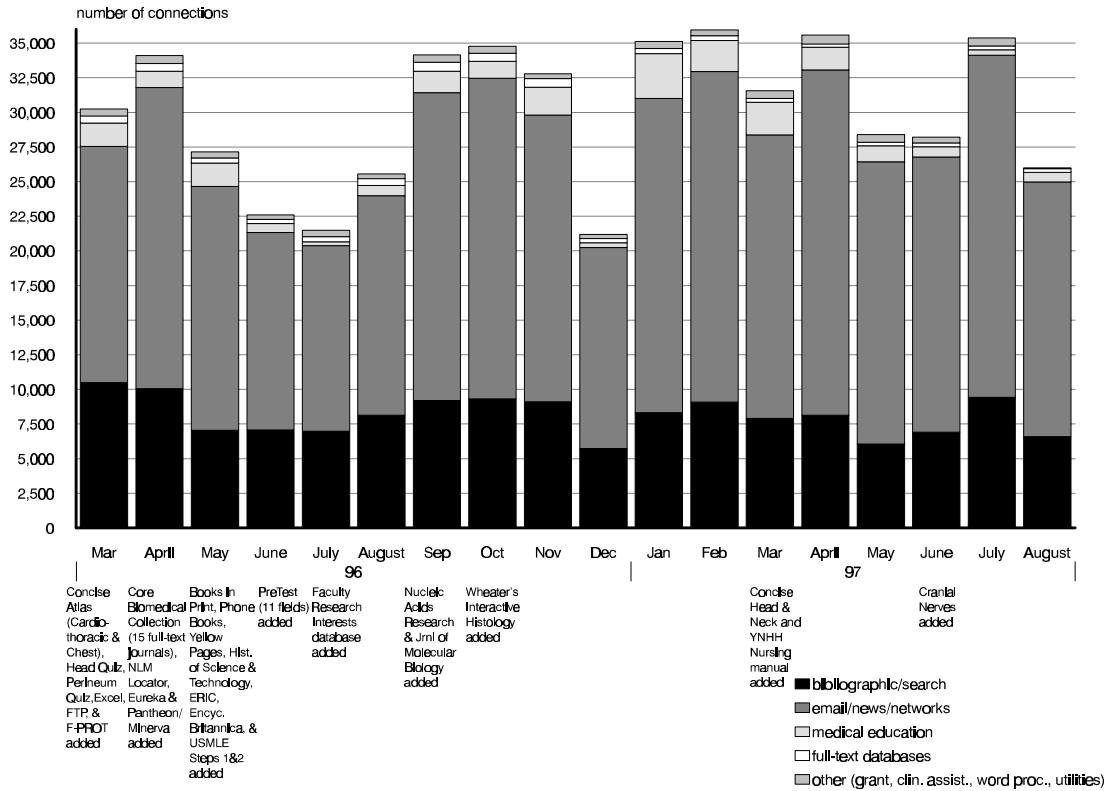


- MEDLINE: 1990-present
- MEDLINE: 1986-89
- MEDLINE: 1976-85
- MEDLINE: 1966-75
- Core Biomedical Collection
- HealthStar
- CINAHL (Nursing)
- Current Contents

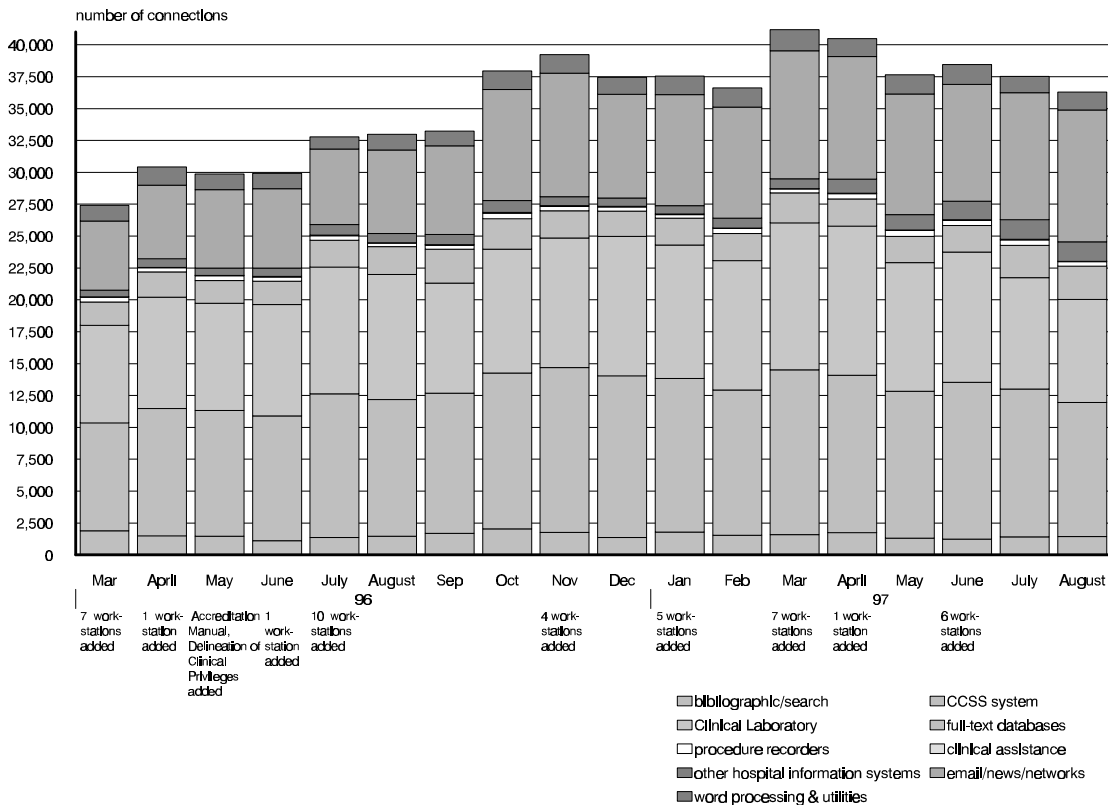
*Difference in size of pies reflects difference in amount of usage.*

# NetMenu workstation usage

## NetMenu in the Medical Library



## NetMenu in the Hospital



## Overall usage for selected databases

	<u>Aug-96</u>	<u>Sep-96</u>	<u>Oct-96</u>	<u>Nov-96</u>	<u>Dec-96</u>	<u>Jan-97</u>	<u>Feb-97</u>	<u>Mar-97</u>	<u>Apr-97</u>	<u>May-97</u>	<u>Jun-97</u>	<u>Jul-97</u>	<u>Aug-97</u>
<b>Summary</b>													
AS/400 applications	-	-	-	-	-	-	-	-	-	-	-	11,815	8,173
Clinical Reporting System (C	425	434	548	392	348	633	742	572	730	620	551	490	495
Current Contents*	2,167	1,534	2,331	1,798	2,937	4,489	3,886	3,931	3,165	3,922	3,173	3,777	3,181
OID databases	13,163	15,035	17,947	16,825	13,296	18,307	17,329	17,053	18,577	16,467	15,948	17,333	14,301
Medical Center Web server	223,670	240,165	303,126	372,135	347,928	431,339	459,226	543,310	623,284	654,313	604,198	682,546	705,680
Electronic mail messages sent	364,477	322,377	456,571	492,880	422,342	621,590	595,748	564,961	572,553	464,333	364,215	384,559	546,536

### Details: AS/400 applications

Animal Care and Use Committee	-	-	-	-	-	-	-	-	-	-	-	142	107
Business Management Systems	-	-	-	-	-	-	-	-	-	-	-	13	64
Clinical G/L Interface	-	-	-	-	-	-	-	-	-	-	-	-	4
Clinical Information	-	-	-	-	-	-	-	-	-	-	-	26	3
Diagnostic Laboratory	-	-	-	-	-	-	-	-	-	-	-	379	174
Graduate and Continuing Educat	-	-	-	-	-	-	-	-	-	-	-	-	46
Grants and Contracts	-	-	-	-	-	-	-	-	-	-	-	92	225
Grants and Contracts - Reports	-	-	-	-	-	-	-	-	-	-	-	-	38
Human Investigation Committee	-	-	-	-	-	-	-	-	-	-	-	-	74
Human Resources (CHR) - Inqui	-	-	-	-	-	-	-	-	-	-	-	-	106
Human Resources (CHR) - Meri	-	-	-	-	-	-	-	-	-	-	-	-	62
Human Resources (CHR) - Rept	-	-	-	-	-	-	-	-	-	-	-	-	4
Human Resources - General	-	-	-	-	-	-	-	-	-	-	-	-	58
Human Resources - Inquiry	-	-	-	-	-	-	-	-	-	-	-	-	2,029
Human Resources - Profiles	-	-	-	-	-	-	-	-	-	-	-	-	3,641
Human Resources - Reports	-	-	-	-	-	-	-	-	-	-	-	-	140
Internal Medicine	-	-	-	-	-	-	-	-	-	-	-	-	12
MED5 - Reports	-	-	-	-	-	-	-	-	-	-	-	-	6
Space Inventory System	-	-	-	-	-	-	-	-	-	-	-	82	232
Student Research	-	-	-	-	-	-	-	-	-	-	-	-	1
Student Systems	-	-	-	-	-	-	-	-	-	-	-	-	481
Support Services	-	-	-	-	-	-	-	-	-	-	-	408	216
System Administration	-	-	-	-	-	-	-	-	-	-	-	-	317
Yale Animal Resource Center	-	-	-	-	-	-	-	-	-	-	-	48	99
Other/Miscellaneous	-	-	-	-	-	-	-	-	-	-	-	7,330	34

### Details: Current Contents

<b>Current Contents total</b>	<b>2,167</b>	<b>1,534</b>	<b>2,331</b>	<b>1,798</b>	<b>2,937</b>	<b>4,489</b>	<b>3,886</b>	<b>3,931</b>	<b>3,165</b>	<b>3,922</b>	<b>3,173</b>	<b>3,777</b>	<b>3,181</b>
Ovid version	-	-	-	-	1,633	2,413	2,181	2,227	2,372	2,410	2,082	2,270	2,050
Basis version, automatic search	-	-	-	-	1,108	1,787	1,476	1,483	756	1,512	1,091	1,507	1,131

### Details: Electronic mail

<b>Electronic mail total*</b>	<b>364,477</b>	<b>322,377</b>	<b>456,571</b>	<b>492,880</b>	<b>422,342</b>	<b>621,590</b>	<b>595,748</b>	<b>564,961</b>	<b>572,553</b>	<b>464,333</b>	<b>364,215</b>	<b>384,559</b>	<b>546,536</b>
PMDF	364,477	322,377	456,571	492,880	422,342	621,590	595,748	564,961	572,553	464,333	364,215	384,559	430,538
email.med.yale.edu	-	-	-	-	-	-	-	-	-	-	-	-	115,998

\*Usage for email.med.yale.edu and estimated usage within MS Mail post offices was added to total usage as of 8/97.

### Details: OVID

1966-75 search sets	5,243	5,101	4,805	5,091	3,823	5,349	5,818	5,752	5,530	5,545	4,678	5,165	3,646
1976-85 search sets	19,270	20,888	19,234	18,694	15,755	20,618	21,255	22,001	21,843	22,084	17,707	20,593	17,346
1986-89 search sets	27,276	30,458	29,425	27,587	23,185	31,520	29,664	30,687	29,999	30,913	29,454	31,317	26,603
1990-present search sets	79,185	100,386	106,766	96,388	76,264	102,575	105,377	96,592	99,365	107,291	104,569	115,069	95,855
Core Biomedical Collection sear	2,351	2,520	2,043	1,870	1,912	2,197	1,841	1,960	2,152	1,737	1,818	1,249	1,436
HealthStar search sets	1,077	2,488	3,945	3,709	2,129	2,301	4,321	2,247	3,502	2,843	1,825	1,514	1,215
nursing search sets	1,075	2,828	3,795	3,543	1,972	2,904	3,645	2,703	3,175	2,740	2,596	2,358	1,592
access method: telnet sessions	-	-	-	-	11,725	15,781	14,668	13,785	14,558	12,716	11,825	12,688	10,283
access method: Web sessions	-	-	-	-	1,381	2,325	2,231	2,900	3,672	3,471	3,847	4,323	3,731
access method: Z39.50	-	-	-	-	-	215	434	363	323	284	280	327	296

# Medical Center Web usage report, August 1997

## Top 10 pages accessed by Yale users

<u>this year</u>	<u>last year</u>
Medical Center	Medical Library
Medical Library	Medical Center
School of Medicine	Server search
MedMenu	MedMenu
Medical Library's Internet search page	School of Medicine
Desktop Support	Medical Library's Internet search page
Server search	Medical Library's other Yale sites page
Scientific Affairs and Grant & Contract Administration	Academic departments page
Medical Library's other Yale sites page	Index of Web pages
Medical Library's Selected Internet Resources	Medical Administrative Systems

## Top 10 pages accessed by external users

<u>this year</u>	<u>last year</u>
Center for Advanced Instructional Media	Center for Advanced Instructional Media
School of Medicine	Medical Center page
Medical Center page	School of Medicine
Server search	Server search
School of Medicine's admissions viewbook	School of Medicine's admissions viewbook
Medical Library	Medical Library
Academic departments page	Child Study Center's Autism/PDD Clinic
Yale-New Haven Hospital	Academic departments page
Child Study Center's Autism page	Yale Journal of Biology and Medicine
Epidemiology & Public Health	Epidemiology & Public Health

	<u>Aug-97</u>	<u>Aug-96</u>	<u>% change</u>
<b>Server total</b>	<b>705,680</b>	<b>223,670</b>	<b>216%</b>
<b>Who connected</b>			
Yale	137,228	33,882	<b>305%</b>
other US educational institutions	80,369	35,350	<b>127%</b>
US government & military	10,099	3,249	<b>211%</b>
US commercial institutions	149,396	45,955	<b>225%</b>
US non-profit organizations	6,845	2,123	<b>222%</b>
Major online service providers	74,287	22,215	<b>234%</b>
International	98,489	36,637	<b>169%</b>
<b># of unique hosts connecting</b>	<b>64,823</b>	<b>35,256</b>	<b>84%</b>
<b>Medical Center</b>	<b>46,987</b>	<b>7,069</b>	<b>565%</b>
<b>Yale-New Haven Hospital</b>	<b>1,874</b>	<b>804</b>	<b>133%</b>
<b>School of Medicine</b>	<b>9,019</b>	<b>3,165</b>	<b>185%</b>
<b>School of Nursing</b>	<b>1047</b>	<b>358</b>	<b>192%</b>
<b>Major resources</b>			
School's organizational chart	64	119	<b>-46%</b>
Computing page	579	191	<b>203%</b>
Core research facilities page	203	184	<b>10%</b>
Education page	196	237	<b>-17%</b>
Emerging Infections Information Network	2,044	701	<b>192%</b>
Medical Library	13,070	6,300	<b>107%</b>
MedMenu	5351	1133	<b>372%</b>
Scientific Affairs and Grant & Contract Administration	1,300	276	<b>371%</b>
School of Medicine application	629*	596	<b>43%</b>
Yale Faculty Practice	568	-	-
<b>Service departments</b>			
Academic Computing	104	53	<b>96%</b>
Biomedical Communications	334	217	<b>54%</b>
C/AIM	4,009	3,672	<b>9%</b>
Center for Cell Imaging	327	153	<b>114%</b>
Copy Center	61	-	-
Desktop Support	1261	127	<b>893%</b>
Help Desk	135	-	-
Systems Support	175	-	-
Technology Operations	219	-	-

\*The application was converted to an Oracle-based application in May 1997.  
The number reported is the number of unique users who registered for applications.

	<u>Aug-97</u>	<u>Aug-96</u>	<u>% change</u>
<b>Academic Departments**</b>			
Anesthesiology	374	192	<b>95%</b>
BBS	824	-	-
Boyer Center for Molecular Medicine	593	182	<b>226%</b>
Cancer Center	609	280	<b>118%</b>
Cell Biology	610	289	<b>111%</b>
Cellular & Molecular Physiology	262	149	<b>76%</b>
Child Study Center	490	-	-
Comparative Medicine	114	38	<b>200%</b>
Dermatology	467	335	<b>39%</b>
Diagnostic Radiology	765	233	<b>228%</b>
Epidemiology & Public Health	2106	976	<b>116%</b>
Genetics	454	212	<b>114%</b>
History of Medicine	122	67	<b>82%</b>
Immunobiology	356	-	-
Internal Medicine	386	214	<b>80%</b>
Laboratory Medicine	273	73	<b>274%</b>
Neurobiology	589	364	<b>62%</b>
Neurology	419	157	<b>167%</b>
Neuroscience Program	421	66	<b>538%</b>
Neurosurgery	160	-	-
Obstetrics & Gynecology	281	262	<b>7%</b>
Ophthalmology	513	336	<b>53%</b>
Orthopaedics & Rehabilitation	197	56	<b>252%</b>
Pathology	875	364	<b>140%</b>
Pediatrics	327	-	-
Pharmacology	373	167	<b>123%</b>
Physician Associate Program	734	-	-
Psychiatry	816	574	<b>42%</b>
Surgery	306	145	<b>111%</b>
Therapeutic Radiology	150	-	-

\*\*Molecular Biochemistry & Biophysics and the Center for Medical Informatics are not listed because they reside on other servers.

## Details for NetMenu Hospital usage

<u>Application</u>	<u>total # of connections</u>		
	<u>Aug-97</u>	<u>Aug-96</u>	<u>% change</u>
<b>Hospital information systems</b>	<b>20118</b>	<b>21238</b>	<b>-5%</b>
CCSS	10522	10724	-2%
ChartView	621	214	190%
Clinical laboratory	8080	9793	-17%
Diagnostic Imaging	142	139	2%
EPIC	534	139	284%
Surgical Pathology	219	229	-4%
<b>Bibliographic databases and search tools</b>	<b>1447</b>	<b>1475</b>	<b>-2%</b>
CINAHL	76	101	-25%
Current Contents	1	-	-
Health Planning and Administration	33	40	-18%
MEDLINE	1246	1246	0%
Yale Library Catalog (OPAC)	91	88	3%
<b>Word processing &amp; utilities</b>	<b>1404</b>	<b>1226</b>	<b>15%</b>
Clinical Workstation locations	65	83	-22%
Format disk	48	29	66%
Virus scan	47	39	21%
Wordperfect	1244	1075	16%
<b>Procedure recorders</b>	<b>348</b>	<b>268</b>	<b>30%</b>
ED	31	-	-
Medicine	84	65	29%
Ob/Gyn	127	166	-23%
Surgery	106	37	186%

<u>Application</u>	<u>total # of connections</u>		
	<u>Aug-97</u>	<u>Aug-96</u>	<u>% change</u>
<b>Full text and factual databases</b>	<b>2607</b>	<b>2056</b>	<b>27%</b>
AIDS/Drugs/Trials/Line-Bioethic	2	-	-
Delineation of Clinical Privileges	29	131	-78%
Electronic Journals	1	-	-
Harrison's	341	348	-2%
Infection Control Manual	3	-	-
JCAHO Accreditation Manual	16	47	-66%
Little Brown Handbooks	172	183	-6%
Merck Manual	85	110	-23%
Micromedex	1629	871	87%
New England Journal of Medicine	146	208	-30%
Nursing Procedures Manual	1	-	-
Red Book on Pediatric Infections	25	37	-32%
Rosen's Emergency Medicine	35	59	-41%
STAT!-Reference	75	122	-39%
YNHH Formulary	1	-	-
YNHH Physician Phone Book	46	71	-35%
<b>Email/news/networks</b>	<b>10330</b>	<b>6546</b>	<b>58%</b>
Biomed Email	992	928	7%
GroupWise Email	2295	906	153%
Internet access	7043	4712	49%
<b>Clinical assistance</b>	<b>34</b>	<b>43</b>	<b>-21%</b>
Coag Advisor	34	43	-21%



Details for NetMenu Medical Library usage

Application	total # of connections			Application	total # of connections			Application	total # of connections		
	Aug-97	Aug-96	% change		Aug-97	Aug-96	% change		Aug-97	Aug-96	% change
<b>Bibliographic databases</b>				<b>Full text and factual databases</b>	<b>251</b>	<b>486</b>	<b>-48%</b>	Breath sounds	25	12	108%
<b>and search tools</b>	<b>6585</b>	<b>8140</b>	<b>-19%</b>	Academic Press Journals	6	-	-	Cardiac Angio	10	13	-23%
AIDSLINE	3	25	-88%	American Journal of Medicine	12	16	-25%	Cardiac Auscultation	20	24	-17%
Biosis	56	62	-10%	American Journal of Obstetrics	2	-	-	Cardiac Echo	15	12	25%
Books in Print	7	22	-68%	American Journal of Surgery	3	7	-57%	Cardiac MRI	9	8	13%
CINAHL	7	9	-22%	Annals of Internal Medicine	7	10	-30%	Cardiac Perfusion Imaging: SP	3	8	-63%
Current Contents	24	71	-66%	Archives of General Psychiatry	4	5	-20%	Cardiac Perfusion Imaging: PI	8	5	60%
ERIC	2	4	-50%	BMJ	5	8	-38%	Cardiothoracic Image Quiz	13	6	117%
Eureka	5	2	150%	Britannica Online	10	23	-57%	Cardiothoracic Imaging	30	12	150%
Expanded Academic Index	11	15	-27%	Canadian Medical Association Journal	0	8	-	Concise Atlas - Cardiothoracic	2	2	0%
Health Planning and Administration	2	6	-67%	Circulation	12	2	500%	Concise Atlas - Chest	1	4	-75%
InfoFinder	77	205	-62%	Electronic Journals	8	-	-	Concise Atlas - Extremities	1	-	-
MEDLINE	4353	4916	-11%	Faculty Research Interests database	11	13	-15%	Concise Atlas - Head & Neck	0	-	-
PsycINFO	95	109	-13%	FREIDA	35	86	-59%	Cranial Nerves	0	-	-
Science Citation Index	88	94	-6%	GenBank	7	4	75%	Embryo images	5	25	-80%
Search term lookup	6	5	20%	History of Science & Technology	2	8	-75%	EPS Review	9	10	-10%
Yale Library Catalog (OPAC)	1849	2596	-29%	Journal of Biological Chemistry	10	25	-60%	Extremities Quiz	9	8	13%
				Journal of Bone & Joint Surgery	0	4	-100%	Forebrain (Syracuse)	1	6	-83%
<b>Email/news/networks</b>	<b>18402</b>	<b>15849</b>	<b>16%</b>	Journal of Clinical Investigation	0	3	-100%	Gross Anatomy Review	14	33	-58%
Biomed Email	6279	6833	-8%	Journal of Molecular Biology	0	12	-	HARP (Histological Anatomy Review	3	11	-73%
Bulldog Access	23	35	-34%	JAMA	8	13	-38%	Head and Neuroanatomy Quiz	5	-	-
Pantheon/Minerva	2479	758	227%	Lancet	5	11	-55%	Head Quiz	2	2	0%
World Wide Web	9601	8216	17%	Legislate	2	6	-67%	Histology Quizbank	5	29	-83%
YaleInfo	20	0	-	Micromedex	4	10	-60%	Histology Video Review	5	29	-83%
				MMWR	1	9	-89%	HyperCELL	4	3	33%
<b>word processing &amp; utilities (CRL)</b>	<b>52</b>	<b>291</b>	<b>-82%</b>	Network Entrez	3	18	-83%	Hyperheart	10	4	150%
Epi Info	1	3	-67%	New England Journal of Medicine	10	20	-50%	Interactive Brain Atlas	2	15	-87%
Excel for Windows	1	12	-92%	NEXIS	40	84	-52%	Interactive Respiratory Physiology	1	2	-50%
Format disk	2	6	-67%	Nucleic Acids Research	0	7	-	KINEMAGE	6	8	-25%
FTP for Windows	3	0	-	OMIM/GDB	3	6	-50%	Lazy Eye	10	10	0%
Health Risk Appraisal	0	1	-100%	Pediatrics	5	17	-71%	MacBaby	2	15	-87%
Virus Scanner (F-PROT)	2	9	-78%	Phone Books	8	23	-65%	Microbiology Quizbank	7	21	-67%
Wordperfect for Windows	43	260	-83%	Science	21	20	5%	Neuroanatomy Review	6	11	-45%
				Scientific American Medicine Consult	6	7	-14%	Neuron Model: Tutorial	3	3	0%
<b>Grant and research information</b>	<b>6</b>	<b>36</b>	<b>-83%</b>	YNHH Nursing Organization and Practic	1	-	-	Neuron Model: Current Clamp	3	2	50%
Annual grant deadlines	0	6	-100%					Neuron Model: Voltage Clamp	12	2	500%
Community of Science	4	-	-	<b>Medical Education</b>	<b>700</b>	<b>747</b>	<b>-6%</b>	Pathology Quizbank	25	84	-70%
CT CRISP	0	20	-100%	Abdomen Quiz	50	47	6%	Perineum Quiz	6	6	0%
IRIS	2	7	-71%	Anatomic Explorer	38	25	52%	PreTest (11 different fields)	15	31	-52%
				Anatomic Explorer CT	23	16	44%	Superhead	13	5	160%
<b>Clinical assistance</b>	<b>3</b>	<b>9</b>	<b>-67%</b>	Animated Embryo	12	35	-66%	Thorax Quiz	19	8	138%
Coag Advisor	0	1	-	Brainstem	21	14	50%	USMLE Step 1	85	25	240%
Physician Data Query (PDQ)	3	7	-57%	Brainstem Quiz	8	-	-	USMLE Step 2	114	87	31%
				Brainstorm	9	9	0%	Wheater's Interactive Histology	1	-	-