

# Information Technology-Medicine Monthly Report

December 1996

## Overall resource usage

<u>Type of application</u>	<u>this month</u>	<u>Dec-95</u>	<u>% change</u>
CINAHL	292	196	49%
Core Biomedical Collection	685	191	259%
Current Contents	2937*	398	352%
Electronic mail (# messages sent)	422,342	195,707	116%
messages per user per day	2.7	-	-
HealthSTAR	307	185	66%
Medline	13,296	9,821	35%
searches per active user per month	5.9	-	-
Medical Center World Wide Web			
Medical Center home page	28,326	5,762	392%
Hospital home page	1,205	577	109%
School of Medicine home page	5,229	2,733	91%
Medical Library home page	10,032	3,286	205%

\*As of 8/96, Current Contents usage includes automatic searches

## Background information

Personal computers as of 10/95  
 Electronic mail users as of 6/96  
 Networked computers as of 6/96  
 Full-time faculty, 1995-96  
 Medical & graduate students, 1995-96  
 Residents & postdocs, 1995-96  
 Full-time staff, 1995-96  
 Nursing staff, 1995-96  
 Number of beds, 1995-96

<u>Hospital</u>	<u>Schools of Medicine &amp; Nursing</u>
2,200	7,500
1,000	4,089
1,575	2,500
-	1,270
-	907
388	916
4,600	2,392
1,250	-
900	-

## Usage of NetMenu workstations

<u>Type of application</u>	<u>Library NetMenu</u>			<u>Hospital NetMenu</u>			<u>Nursing NetMenu</u>		
	<u># of connections</u>	<u>Dec-95</u>	<u>% change</u>	<u>this month</u>	<u>Dec-95</u>	<u>% change</u>	<u>this month</u>	<u>Dec-95</u>	<u>% change</u>
Medical Education	353	329	7%	-	-	-	-	-	-
Bibliographic databases & search tools	5,738	5,208	10%	1,365	1108	23%	190	168	13%
Full text & factual databases	305	306	0%	1,980	1625	22%	11	14	-
Grant & research information	20	89	-78%	-	-	-	2	0	-
Clinical assistance	7	39	-82%	46	32	44%	3	0	-
Email/news/networks	14,503	9,415	54%	8,143	3551	129%	393	296	33%
Word processing & utilities	256	140	83%	1,317	733	80%	-	-	-
Hospital information systems	-	-	-	24,264	11481	111%	-	-	-
Procedure recorders	-	-	-	332	337	-1%	-	-	-
<b>Total</b>	<b>21,182</b>	<b>15,526</b>	<b>36%</b>	<b>37,447</b>	<b>18,867</b>	<b>98%</b>	<b>599</b>	<b>478</b>	<b>25%</b>
connections per workstation	815	739	10%	430	331	30%	300	239	

## Inventory of NetMenu workstations

<u>Location</u>	<u># of workstations</u>	
	<u>this month</u>	<u>Dec-95</u>
Libraries	28	25
Hospital	87	57
<b>Total</b>	<b>115</b>	<b>82</b>

## Noteworthy changes

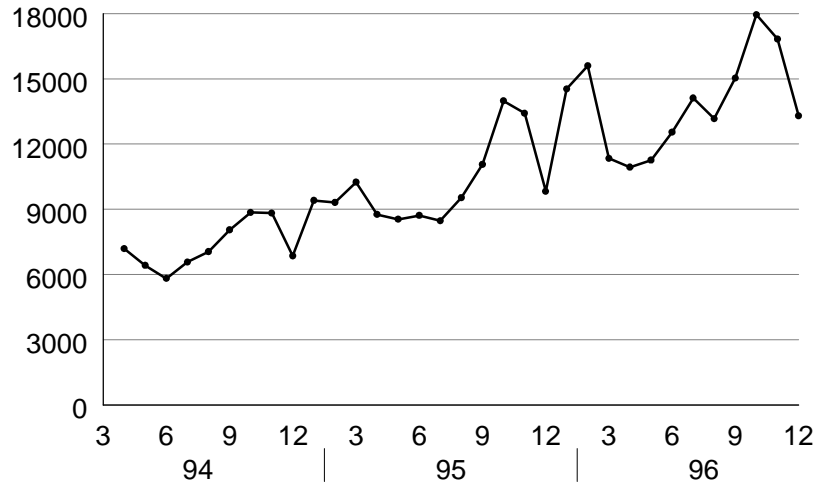
Current Contents was added as OVID database.

OVID databases were made accessible via a Web interface.

# Institutional Resource Usage

## MEDLINE

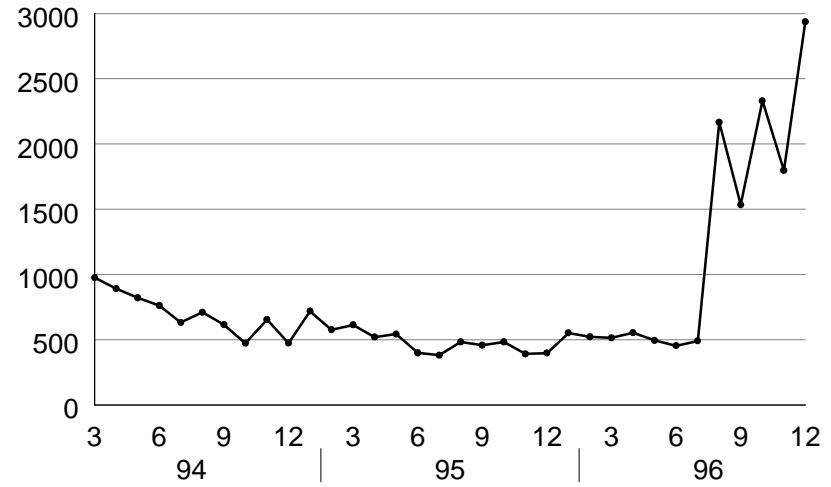
number of sessions per month



source: MEDLINE usage data

## Current Contents

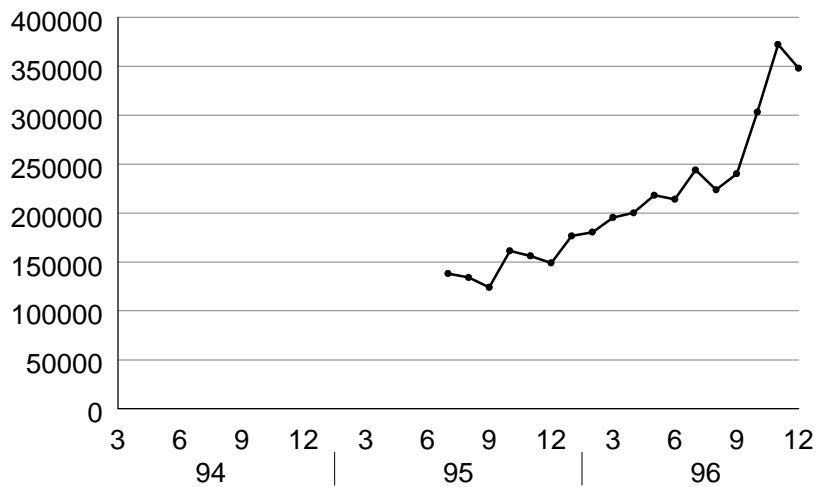
number of connections per month



source: Current Contents usage data

## Medical Center Web server

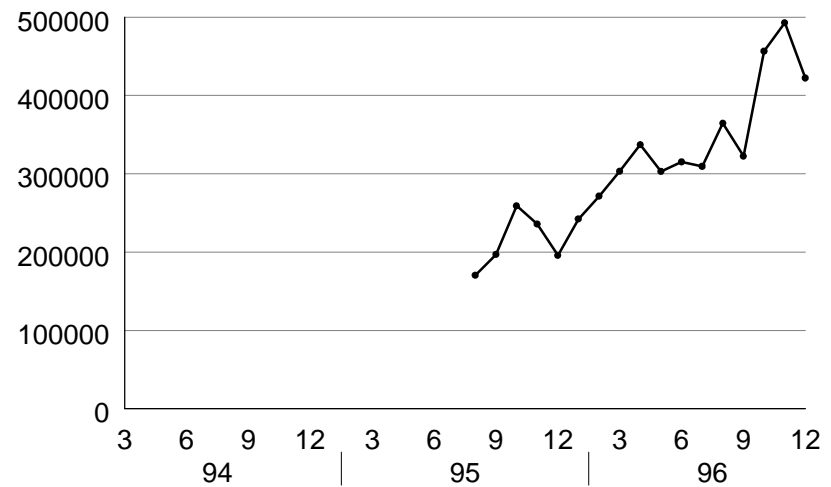
number of pages per month



source: WEB usage data

## Electronic mail

number of messages per month



source: PMDF usage data

# Medical Center Web usage report

## Top 10 pages accessed by Yale users

<u>this month</u>	<u>last month</u>
Medical Center	Medical Center
Medical Library	Medical Library
School of Medicine	MedMenu
MedMenu	School of Medicine
Desktop Support	Desktop Support
Server search	Server search
Medical Library's Internet search page	Medical Library's Internet search page
Library's other Yale & New Haven area Web sites page	MedMenu's alphabetical list of resources
Other Yale & New Haven area Web sites page	Library's other Yale & New Haven area Web sites page
MedMenu's alphabetical list of resources	Academic departments page

## Top 10 pages accessed by external users

<u>this month</u>	<u>last month</u>
C/AIM style manual	C/AIM style manual
Medical Center page	Medical Center page
School of Medicine	Server search
Server search	School of Medicine
Medical Library	Medical Library
School of Medicine's admissions viewbook	School of Medicine's admissions viewbook
Child Study Center's Autism/PDD Clinic	Child Study Center's Autism/PDD Clinic
Academic departments page	Academic departments page
Yale-New Haven Hospital	Yale Journal of Biology and Medicine
Yale Journal of Biology and Medicine	Yale-New Haven Hospital

	<u>Dec-96</u>	<u>Dec-95</u>	<u>% change</u>
<b>Server total</b>	<b>347,928</b>	<b>156,114</b>	<b>123%</b>
<b>Who connected</b>			
Yale	118,994	16,176	<b>636%</b>
other US educational institutions	33,908	24,983	<b>36%</b>
US government & military	3,313	2,664	<b>24%</b>
US commercial institutions	61,623	36,343	<b>70%</b>
US non-profit organizations	2,265	1,698	<b>33%</b>
Major online service providers	28,765	12,304	<b>134%</b>
International	50,723	27,164	<b>87%</b>
<b># of unique hosts connecting</b>	<b>37,500</b>	<b>22,838</b>	<b>64%</b>
<b>Medical Center</b>	<b>28,326</b>	<b>5,762</b>	<b>392%</b>
<b>Yale-New Haven Hospital</b>	<b>1,205</b>	<b>577</b>	<b>109%</b>
<b>School of Medicine</b>	<b>5,229</b>	<b>2,733</b>	<b>91%</b>
<b>School of Nursing</b>	<b>491</b>	-	-
<b>Major resources</b>			
School's organizational chart	37	-	-
Computing page	182	23	<b>691%</b>
Core research facilities page	181	-	-
Education page	330	-	-
Emerging Infections Information Network	1,067	-	-
Faculty Research Interests database	687	-	-
Medical Library	10,032	3,286	<b>205%</b>
MedMenu	3841	-	-
Research Affairs	121	-	-
School of Medicine application	226	131	<b>73%</b>
Yale Faculty Practice	268	-	-
<b>Service departments</b>			
Biomedical Communications	305	283	<b>8%</b>
C/AIM	3,499	5,033	<b>-30%</b>
Center for Cell Imaging	281	166	<b>69%</b>
Desktop Support	1152	-	-
Medical Administrative Systems	359	256	<b>40%</b>
Systems Support	136	-	-

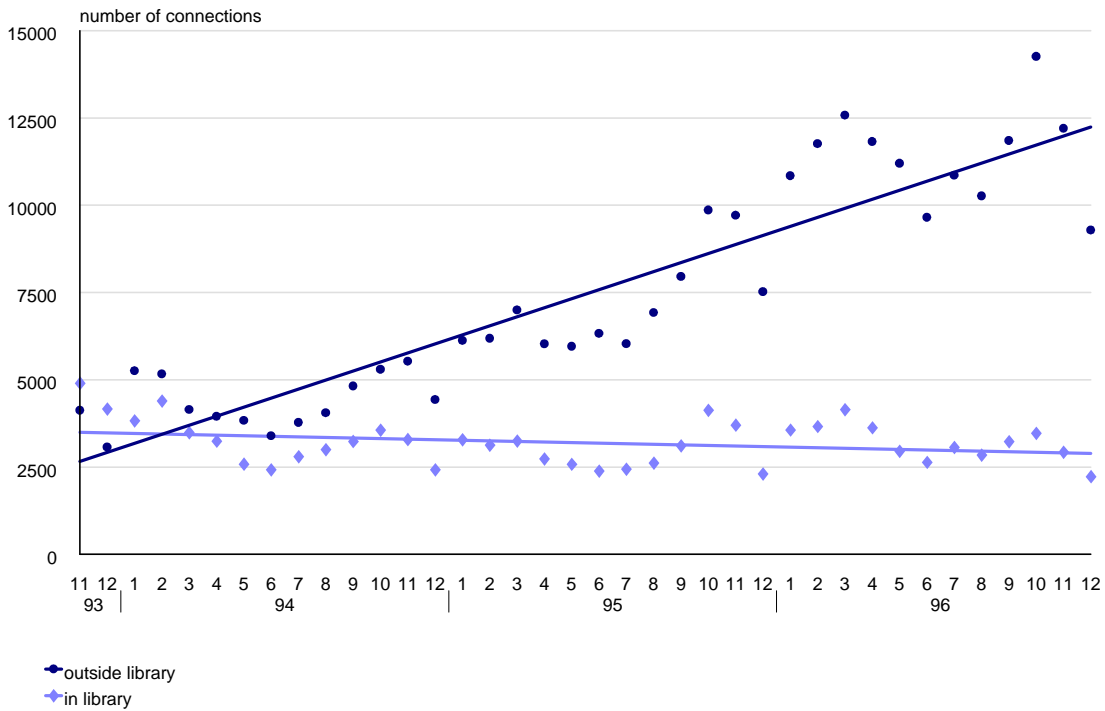
	<u>Dec-96</u>	<u>Dec-95</u>	<u>% change</u>
<b>Academic Departments*</b>			
Anesthesiology	337	122	<b>176%</b>
Boyer Center for Molecular Medicine	489	147	<b>233%</b>
Cancer Center	389	-	-
Cell Biology	453	495	<b>-8%</b>
Cellular & Molecular Physiology	186	146	<b>27%</b>
Child Study Center	131	-	-
Comparative Medicine	78	-	-
Dermatology	503	-	-
Diagnostic Radiology	705	246	<b>187%</b>
Epidemiology & Public Health	1216	498	<b>144%</b>
Genetics	323	415	<b>-22%</b>
History of Medicine	107	-	-
Immunobiology	-	-	-
Internal Medicine	266	-	-
Laboratory Medicine	136	-	-
Neurobiology	531	137	<b>288%</b>
Neurology	282	188	<b>50%</b>
Neuroscience Program	125	-	-
Neurosurgery	46	-	-
Obstetrics & Gynecology	211	64	<b>230%</b>
Ophthalmology	469	396	<b>18%</b>
Orthopaedics & Rehabilitation	158	-	-
Pathology	581	-	-
Pediatrics	209	-	-
Pharmacology	225	98	<b>130%</b>
Physician Associate Program	275	-	-
Psychiatry	690	585	<b>18%</b>
Surgery	292	116	<b>152%</b>
Therapeutic Radiology	-	-	-

\*Molecular Biochemistry & Biophysics and the Center for Medical Informatics are not listed because they reside on other servers.

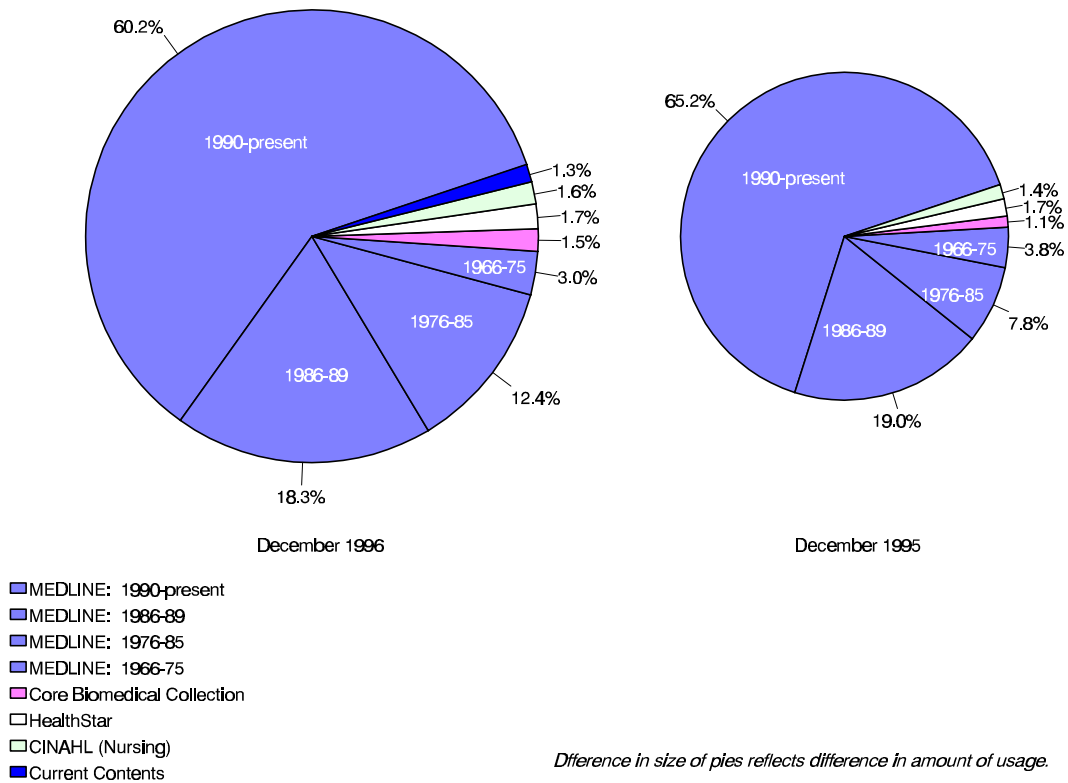
# OVID Usage

## OVID usage over time

includes MEDLINE, CINAHL, HealthStar, and Core Biomedical Collection

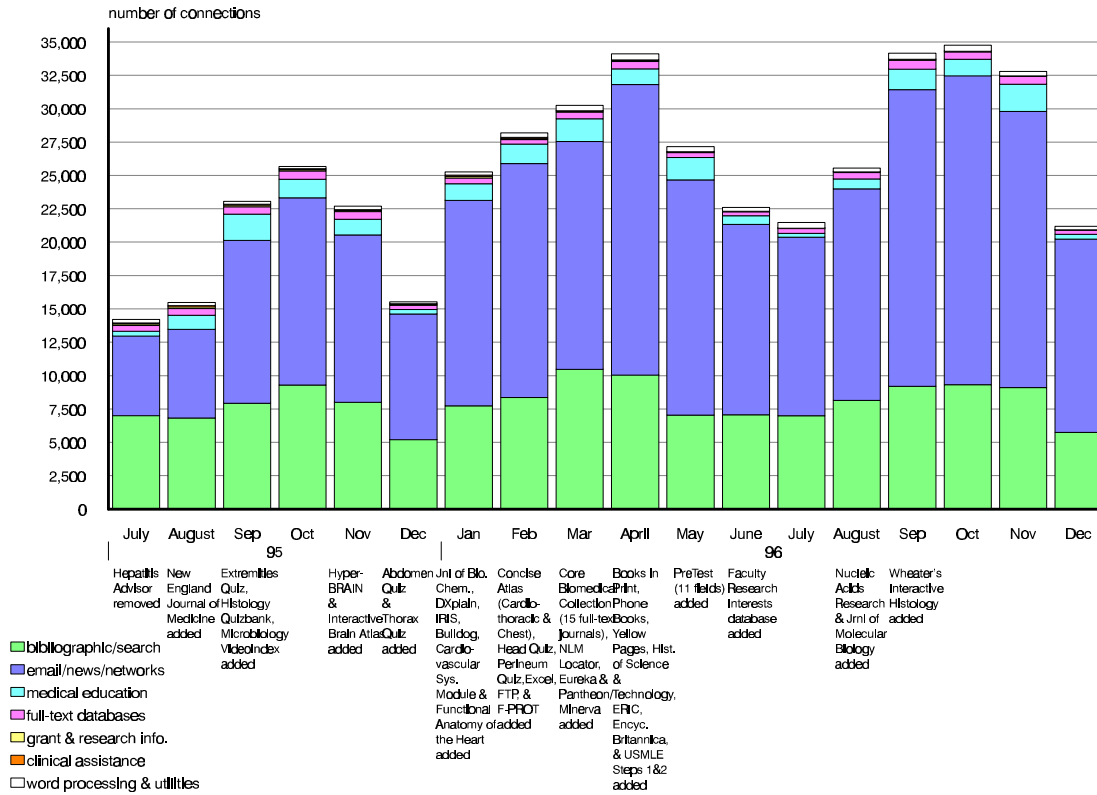


## OVID usage Breakdown of databases

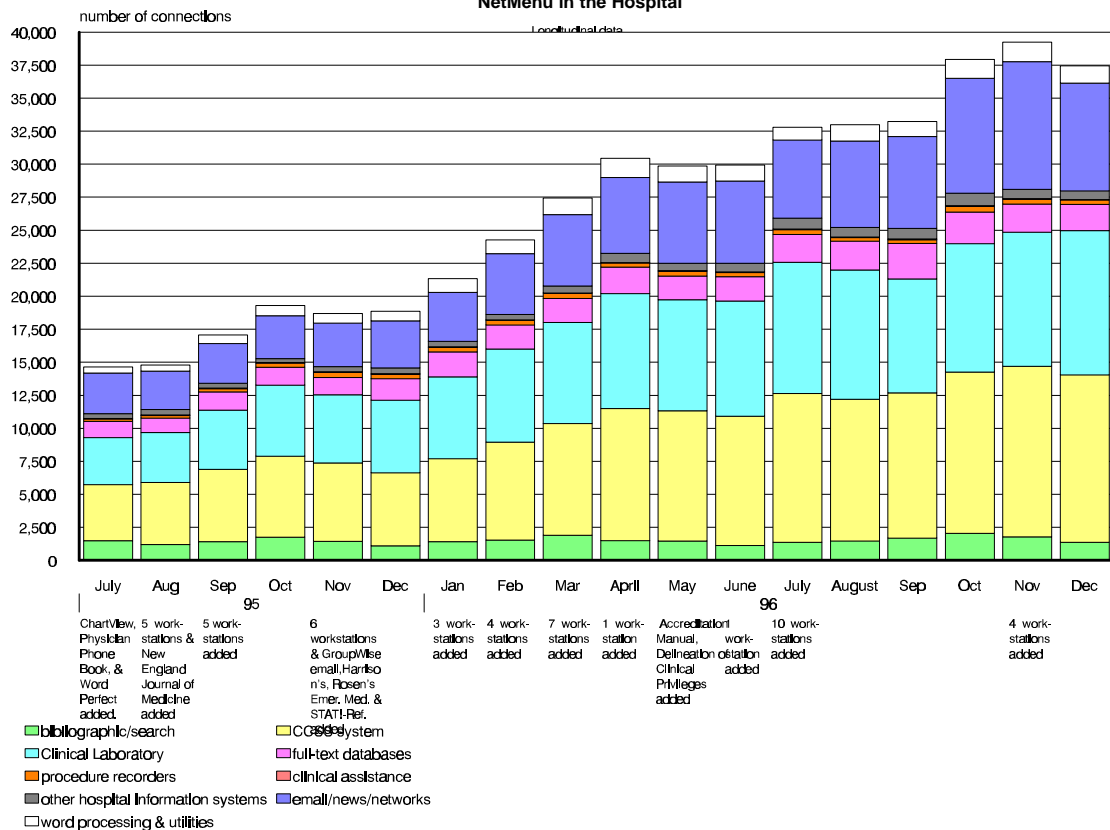


# NetMenu workstation usage

## NetMenu in the Medical Library



## NetMenu in the Hospital



## Details for NetMenu Hospital usage

<u>Application</u>	<u>total # of connections</u>			<u>Application</u>	<u>total # of connections</u>		
	<u>Dec-96</u>	<u>Dec-95</u>	<u>% change</u>		<u>Dec-96</u>	<u>Dec-95</u>	<u>% change</u>
<b>Hospital information systems</b>	<b>24264</b>	<b>11481</b>	<b>111%</b>	<b>Full text and factual databases</b>	<b>1980</b>	<b>1625</b>	<b>22%</b>
CCSS	12689	5531	129%	Delineation of Clinical Privileges	21	-	-
ChartView	239	131	82%	Harrison's	275	218	26%
Clinical laboratory	10921	5497	99%	JCAHO Accreditation Manual	12	-	-
Diagnostic Imaging	139	129	8%	Little Brown Handbooks	158	215	-27%
EPIC	96	88	9%	Merck Manual	100	120	-17%
Surgical Pathology	180	105	71%	Micromedex	996	587	70%
				New England Journal of Medicine	174	151	15%
<b>Bibliographic databases and search tools</b>	<b>1365</b>	<b>1108</b>	<b>23%</b>	Red Book on Pediatric Infections	20	31	-35%
CINAHL	91	57	60%	Rosen's Emergency Medicine	44	69	-36%
Health Planning and Administration	47	36	31%	STAT!-Reference	94	131	-28%
MEDLINE	1134	916	24%	YNHH Physician Phone Book	86	103	-17%
Yale Library Catalog (OPAC)	93	99	-6%				
				<b>Email/news/networks</b>	<b>8143</b>	<b>3551</b>	<b>129%</b>
<b>Word processing &amp; utilities</b>	<b>1317</b>	<b>733</b>	<b>80%</b>	Biomed Email	490	404	21%
Clinical Workstation locations	53	102	-48%	GroupWise Email	1621	178	811%
Format disk	30	19	58%	Internet access	6032	2969	103%
Virus scan	29	14	107%				
Wordperfect	1205	598	102%	<b>Procedure recorders</b>	<b>332</b>	<b>337</b>	<b>-1%</b>
				Medicine	79	75	5%
<b>Clinical assistance</b>	<b>46</b>	<b>32</b>	<b>44%</b>	Ob/Gyn	199	156	28%
Coag Advisor	46	32	44%	Surgery	54	106	-49%

**Details for NetMenu Medical Library usage**

<b>Application</b>	<b>total # of connections</b>			<b>Application</b>	<b>total # of connections</b>			<b>Application</b>	<b>total # of connections</b>		
	<b>Dec-96</b>	<b>Dec-95</b>	<b>% change</b>		<b>Dec-96</b>	<b>Dec-95</b>	<b>% change</b>		<b>Dec-96</b>	<b>Dec-95</b>	<b>% change</b>
<b>Bibliographic databases</b>				<b>Full text and factual databases</b>	<b>305</b>	<b>306</b>	<b>0%</b>	<b>Medical Education</b>	<b>353</b>	<b>329</b>	<b>7%</b>
<b>and search tools</b>	<b>5738</b>	<b>5208</b>	<b>10%</b>	AIDSTrials/AIDSDrugs/DIRLINE	0	20	-100%	Abdomen Quiz	26	7	271%
AIDSLINE	3	58	-95%	Academic Press Journals	10	-	-	Anatomic Explorer	15	26	-42%
Biosis	54	138	-61%	American Journal of Medicine	6	-	-	Anatomic Explorer CT	7	6	17%
Books in Print	20	-	-	American Journal of Obstetrics	1	-	-	Animated Embryo	9	20	-55%
CINAHL	13	48	-73%	American Journal of Surgery	2	-	-	Brainstem	4	7	-43%
Current Contents	57	153	-63%	Annals of Internal Medicine	5	-	-	Brainstorm	8	8	0%
ERIC	4	-	-	Archives of General Psychiatry	6	-	-	Breath sounds	6	3	100%
Eureka	4	-	-	BMJ	1	-	-	Cardiac Angio	5	1	400%
Expanded Academic Index	24	98	-76%	Britannica Online	11	-	-	Cardiac Auscultation	13	9	44%
Health Planning and Administration	4	50	-92%	Canadian Medical Association Journal	2	-	-	Cardiac Echo	9	4	125%
InfoFinder	91	71	28%	Circulation	2	-	-	Cardiac MRI	6	6	0%
MEDLINE	3318	2836	17%	Electronic Journals	6	-	-	Cardiac Perfusion Imaging: SP	2	0	-
PsycINFO	79	166	-52%	Faculty Research Interests database	13	-	-	Cardiac Perfusion Imaging: PI	4	1	300%
Science Citation Index	100	238	-58%	FREIDA	47	55	-15%	Cardiothoracic Image Quiz	4	24	-83%
Search term lookup	1	19	-95%	GenBank	26	10	160%	Cardiothoracic Imaging	9	12	-25%
Yale Library Catalog (OPAC)	1966	1333	47%	History of Science & Technology	14	-	-	Concise Atlas - Cardiothoracic	6	-	-
<b>Email/news/networks</b>	<b>14503</b>	<b>9415</b>	<b>54%</b>	Journal of Biological Chemistry	3	-	-	Concise Atlas - Chest	6	-	-
Biomed Email	7666	5942	29%	Journal of Bone & Joint Surgery	0	-	-	Concise Atlas - Extremities	1	-	-
Bulldog Access	17	-	-	Journal of Clinical Investigation	1	-	-	Embryo images	2	14	-86%
MEDINFO (Yale-New Haven gopher)	-	432	-	Journal of Molecular Biology	1	-	-	EPS Review	1	1	0%
NIH gopher	-	56	-	JAMA	8	-	-	Extremities Quiz	4	14	-71%
Pantheon/Minerva	1629	-	-	Lancet	4	-	-	Forebrain (Syracuse)	1	3	-67%
World Wide Web	5160	2133	142%	Legislate	1	17	-94%	Gross Anatomy Review	14	22	-36%
YaleInfo	31	852	-	Micromedex	11	6	83%	HARP (Histological Anatomy Review)	11	7	57%
<b>word processing &amp; utilities (CRL)</b>	<b>256</b>	<b>140</b>	<b>83%</b>	MMWR	3	12	-75%	Head Quiz	2	-	-
Epi Info	12	11	9%	Network Entrez	2	0	-	Histology Quizbank	10	18	-44%
Excel for Windows	20	-	-	New England Journal of Medicine	9	22	-59%	Histology Video Review	6	9	-33%
Format disk	4	4	0%	NEXIS	62	131	-53%	HyperCELL	6	1	500%
FTP for Windows	6	-	-	Nucleic Acids Research	1	-	-	Hyperheart	2	8	-75%
Health Risk Appraisal	0	0	-	OMIM/GDB	12	24	-50%	Interactive Brain Atlas	6	3	100%
Reconnect Printer	0	-	-	OncoDisc	0	2	-100%	Interactive Histology	0	-	-
Virus Scanner (F-PROT)	8	-	-	Pediatrics	7	-	-	Interactive Respiratory Physiology	2	-	-
Wordperfect for Windows	206	125	65%	Phone Books	14	-	-	KINEMAGE	4	0	-
				Science	9	-	-	Lazy Eye	4	3	33%
				Scientific American Medicine Consult	5	7	-29%	MacBaby	4	0	-
				Yellow Pages	0	-	-	Microbiology Quizbank	26	-	-
				<b>Grant and research information</b>	<b>20</b>	<b>89</b>	<b>-78%</b>	Neuroanatomy Review	3	3	0%
				Community of Science	2	-	-	Neuron Model: Tutorial	1	2	-50%
				CT CRISP	13	38	-66%	Neuron Model: Current Clamp	1	0	-
				IRIS	5	-	-	Neuron Model: Voltage Clamp	4	0	-
				NIH Guide to Grants & Contracts	0	26	-100%	Pathology Quizbank	43	58	-26%
				<b>Clinical assistance</b>	<b>7</b>	<b>39</b>	<b>-82%</b>	Perineum Quiz	0	-	-
				Coag Advisor	1	19	-95%	PreTest (11 different fields)	18	-	-
				DXplain	0	-	-	Superhead	2	1	100%
				NIH Consensus Development Statements	0	8	-100%	Thorax Quiz	8	7	14%
				Physician Data Query (PDQ)	6	12	-50%	USMLE Step 1	5	-	-
								USMLE Step 2	22	-	-
								Wheater's Interactive Histology	1	-	-