



Mad Dog Multimedia, Inc.
MegaSTOR™ DVD±RW Firmware Update(s)
Download and Usage Instructions

The flash tool (and embedded firmware) you are using is exclusively for Mad Dog Multimedia's MegaSTOR™ family of drives (internal and external). Mad Dog Multimedia will not be responsible for wrongly flashing a different manufacturer's product nor any resulting problems or damage resulting from failure to follow these guidelines. If you are uncomfortable with the following instructions and process, simply call our Technical Support department @ (801) 607-4304 for assistance.

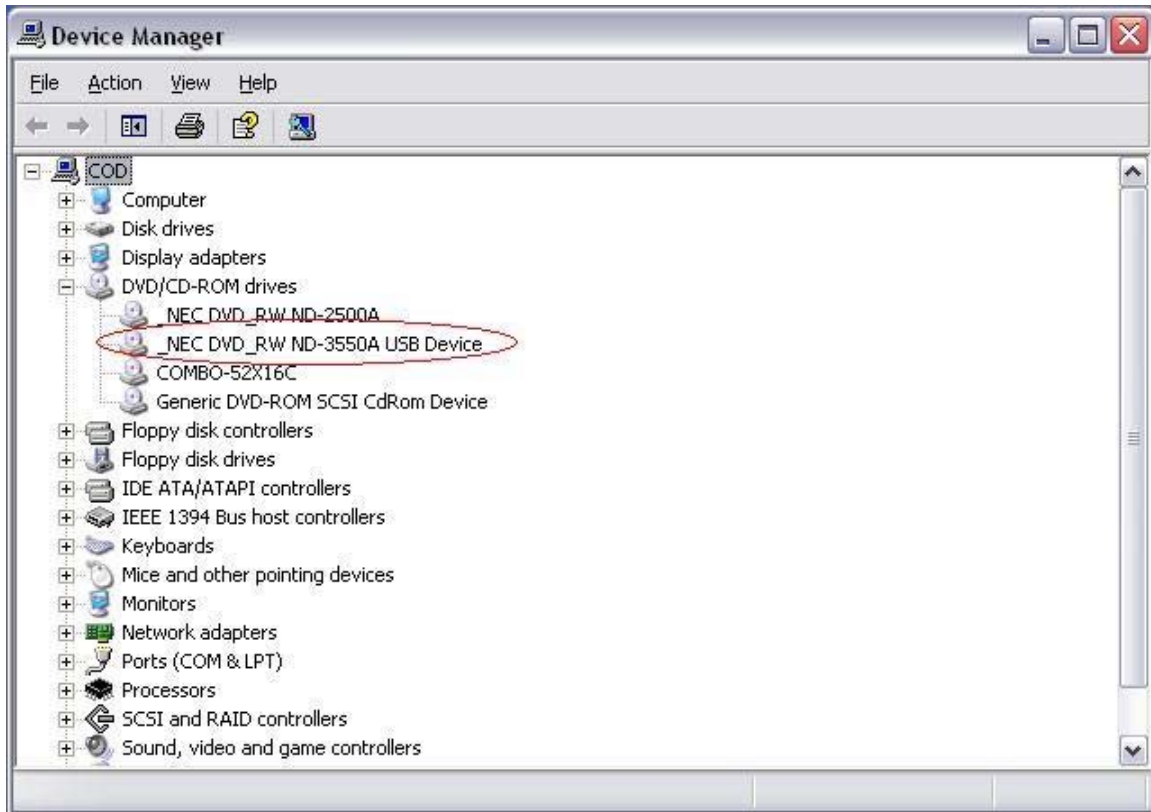
Navigate to <http://mdmm.com/support/drivers.asp>

Scroll down until you find the "Firmware Update" section. Once there, select the appropriate product for firmware update. There are two (2) different versions of these specific MegaSTOR™ drive as follows:

MegaSTOR™ 16x Double Layer (NEC 3550A)

MegaSTOR™ 16x Triple Format (NEC 4570A)

The firmware update is different for each of these drives. If you do not know which version of the MegaSTOR™ drive you have, you can determine this by clicking on the "Start" button, click on "Control Panel", and open (double-click) the "System" icon. If you have Win2K or XP, select the "Hardware" tab and click on the "Device Manager" button. If you have Win98/ME, click on the "Device Manager" tab. Once there, expand the "+" button next to "DVD/CD-ROM Drives" to display your specific MegaSTOR™ drive. The respective Device Manager window(s) should look like the following:



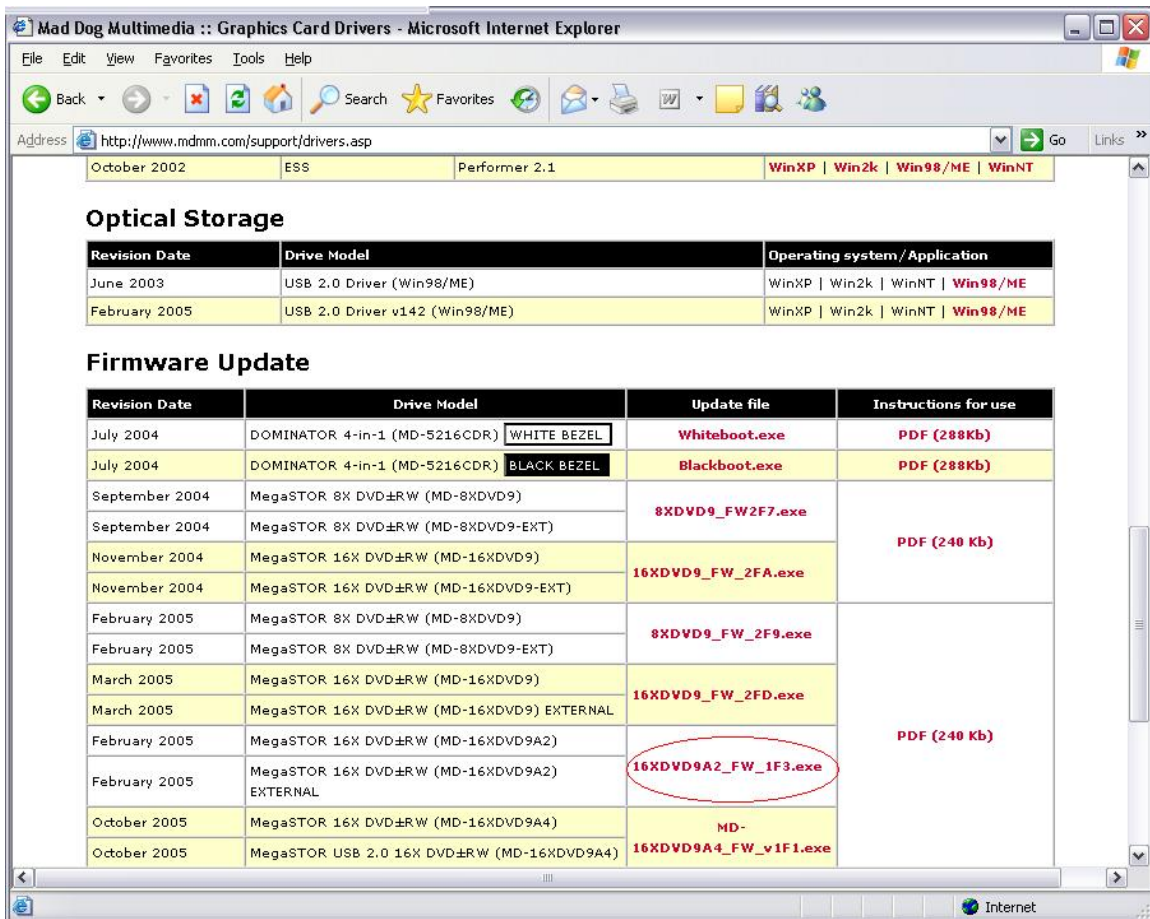
In the Windows 2000/XP example above, you'll notice that a NEC 3550A is installed. So we have the MegaSTOR™ 16x Double Layer (NEC 3550A). Now that we've identified the drive installed, we can download the firmware for that specific product, in this case, firmware version (update) 1F2.

If we saw an NEC 4570 in Device Manager, then we would want to download the firmware version specific to that drive – version 1F0.

Please note that while these are the most current firmware version at the time this is being written, whenever we have new firmware updates those will be posted on our website. While the most current firmware version might differ from what this instructional guide states, the directions for updating remain the same.



Download your product-specific firmware by clicking on the corresponding "Update File" to the right of the drive model on our website. An example is illustrated below:



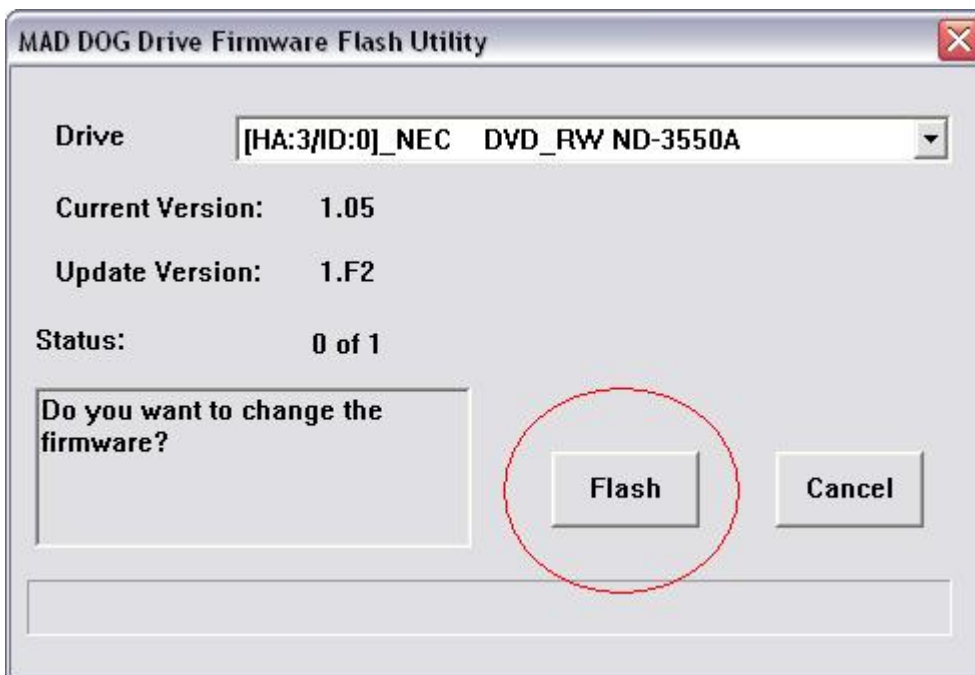
Be sure to select the download location as your desktop for ease of use. Since the firmware update process is identical for these drives, be sure you have downloaded the correct firmware upgrade file to prevent any update problems. We strongly recommend you do NOT attempt to update a drive with non specific firmware.

After you have successfully downloaded the appropriate firmware, it will reside on your desktop as illustrated in the image below.

Examples below and on the following pages are for the MegaSTOR™ 16x Double Layer (NEC 3550A) drive.



Double-click on the file "16X2DVD9-8X_FW_1F2.exe" to launch the flash utility. When opened, the flash tool will look as follows:

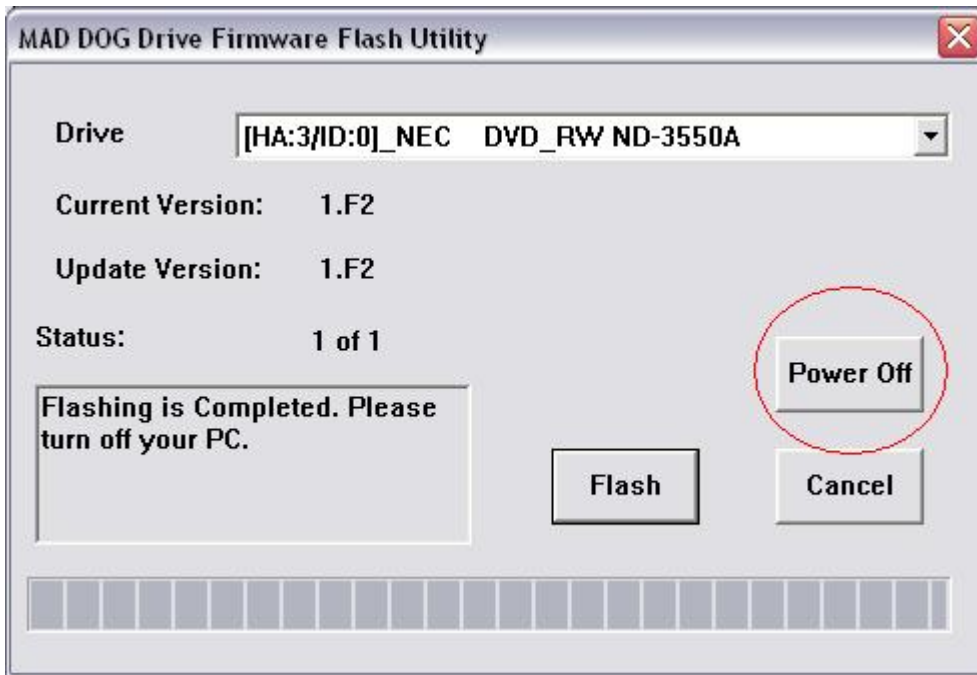


Make sure to confirm that the drive to be flashed appears in the "Drive" window. Additionally, confirm the firmware version of your drive is older than the updated firmware (for example, firmware 1.F2 is currently the newest). After confirming the necessary information,



you can proceed with the update. To do so, simply click on the "Flash" button as circled in the image above. The flash (firmware update) will typically complete in less than one (1) minute.

When the update is complete, simply click (select) "Power Off" to shutdown your system as seen below.



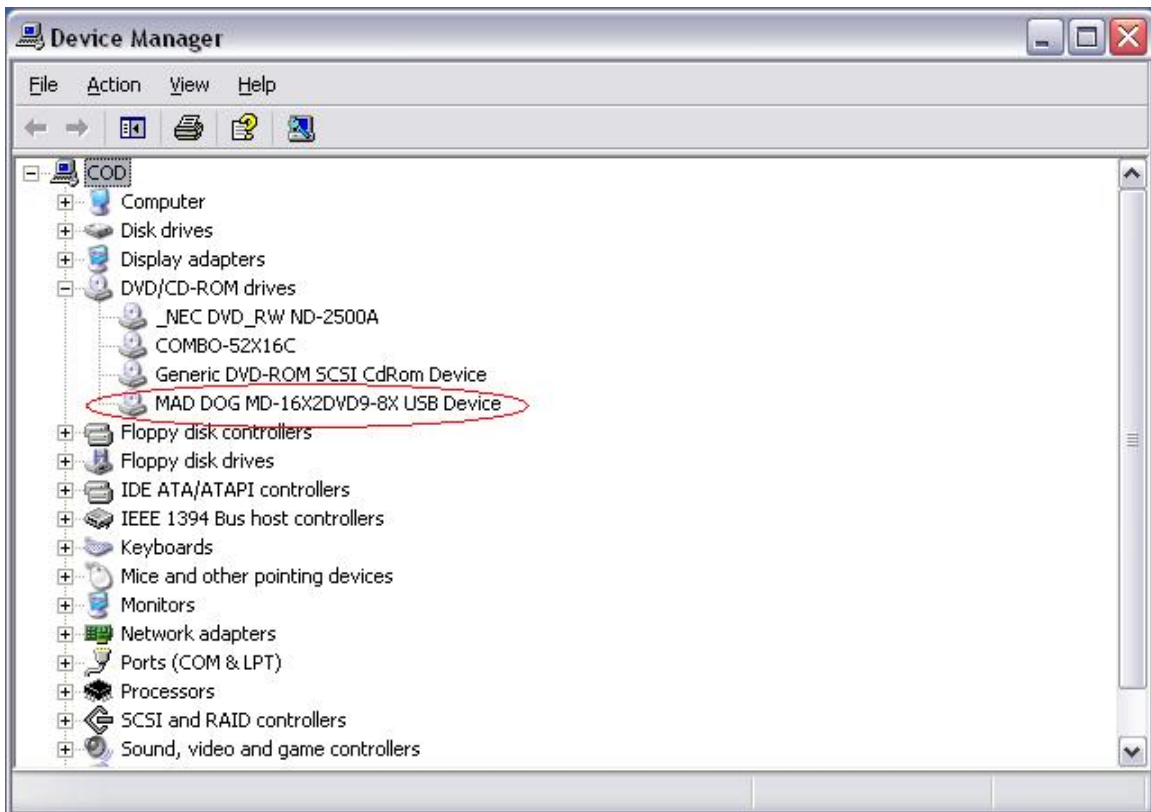
When the confirmation windows, as seen below, pops-up,



click "OK" to shutdown your system. If this an external drive, be sure to power off the drive as well. After your system shuts-down, start your system normally and if using an external drive power it on again once Windows has finished booting. Alternatively, you can select "Cancel" to close the flash utility. If you do so, you will need



to manually re-boot or re-start your system for the firmware changes to take effect. The new firmware will then be recognized by your system and will now be recognized as a Mad Dog drive as in the example below. Update successful!



Should you have any other questions or concerns regarding this process, please contact our technical support staff at (801) 607-4304 or via e-mail at support@mdmm.com.