

AMI
P AND
HAS INVISIBLE
OW UNDER
ING VELLUM

Curtiss
HAWK

NR982V

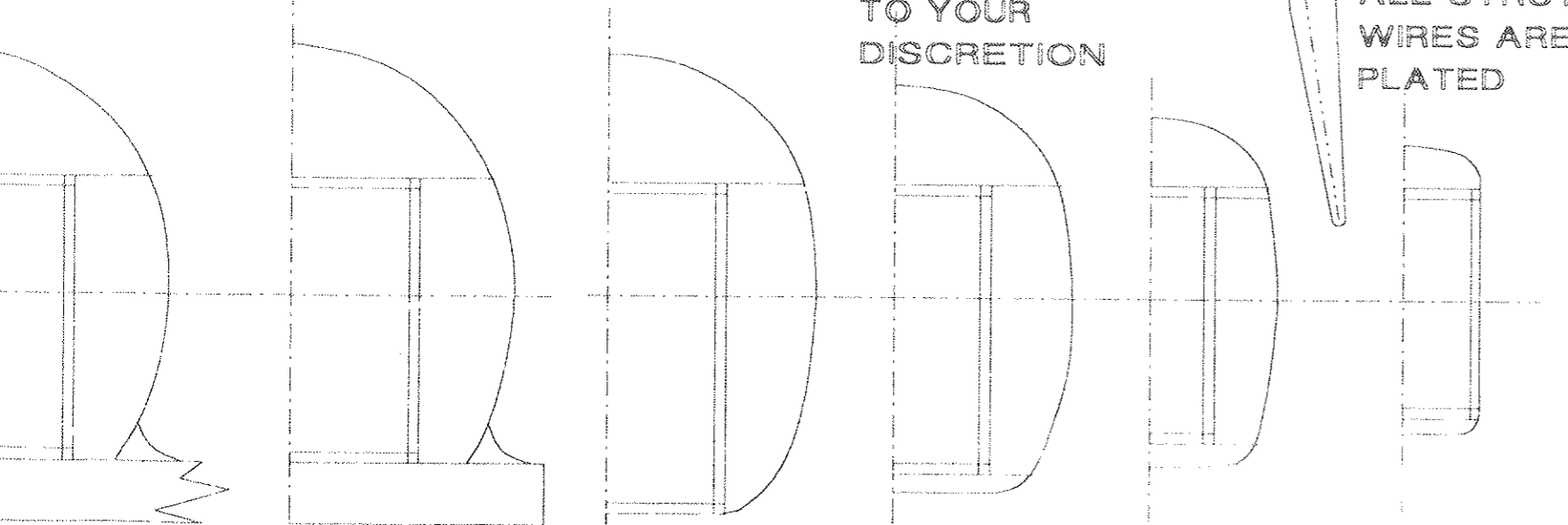
STA.134

STA.157

OT SHOWN, PLACE AS DESIRED

LIGHTENING
HOLES AND
STRINGER
PLACEMENT LEFT
TO YOUR
DISCRETION

ALL STRUTS AND
WIRES ARE CHROME
PLATED



STA.26

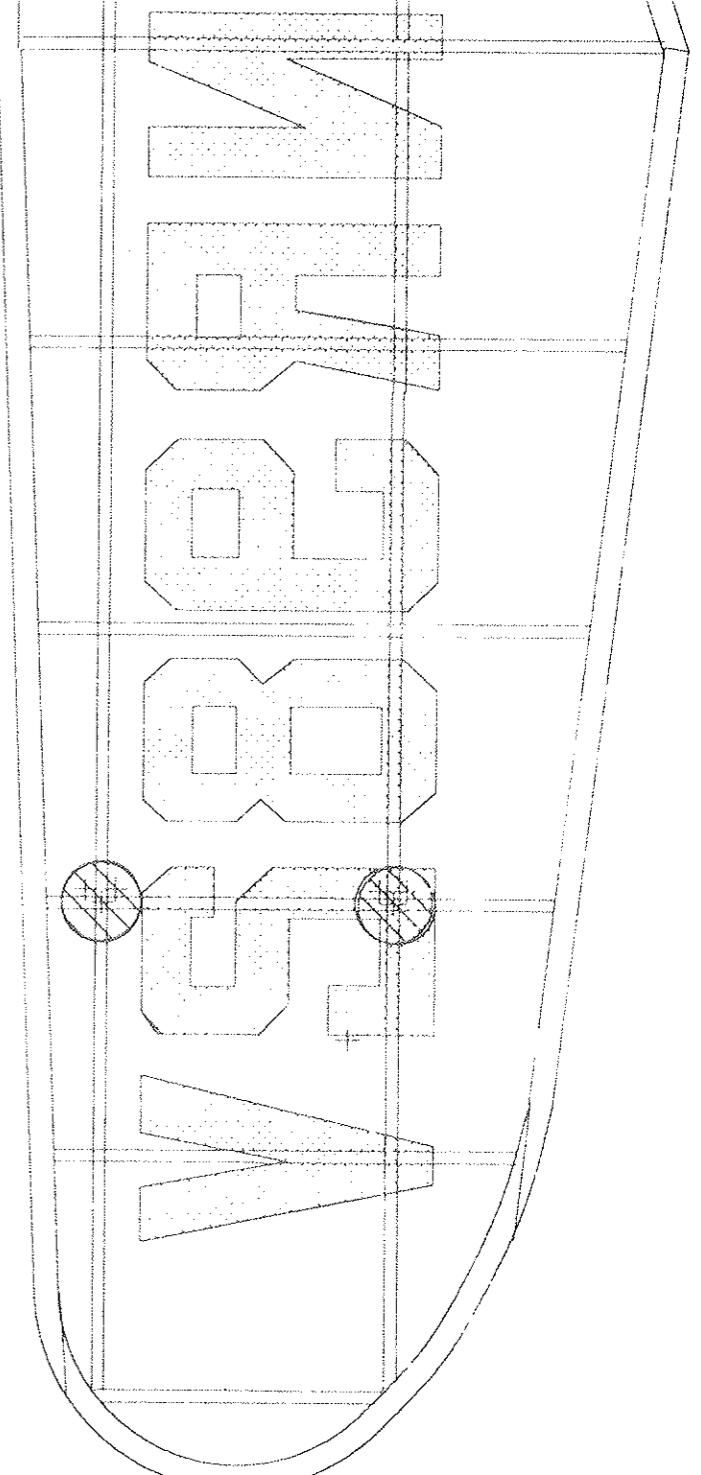
STA.50

STA.80

STA.107

STA.134

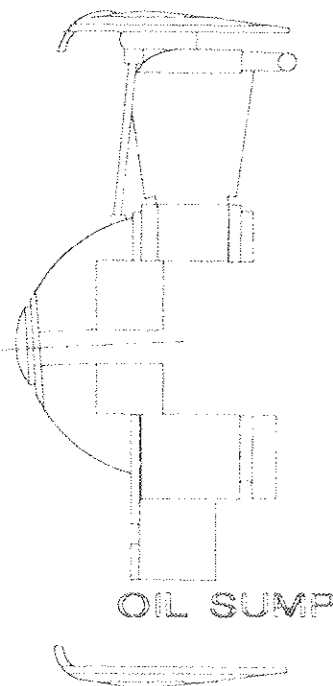
STA.157



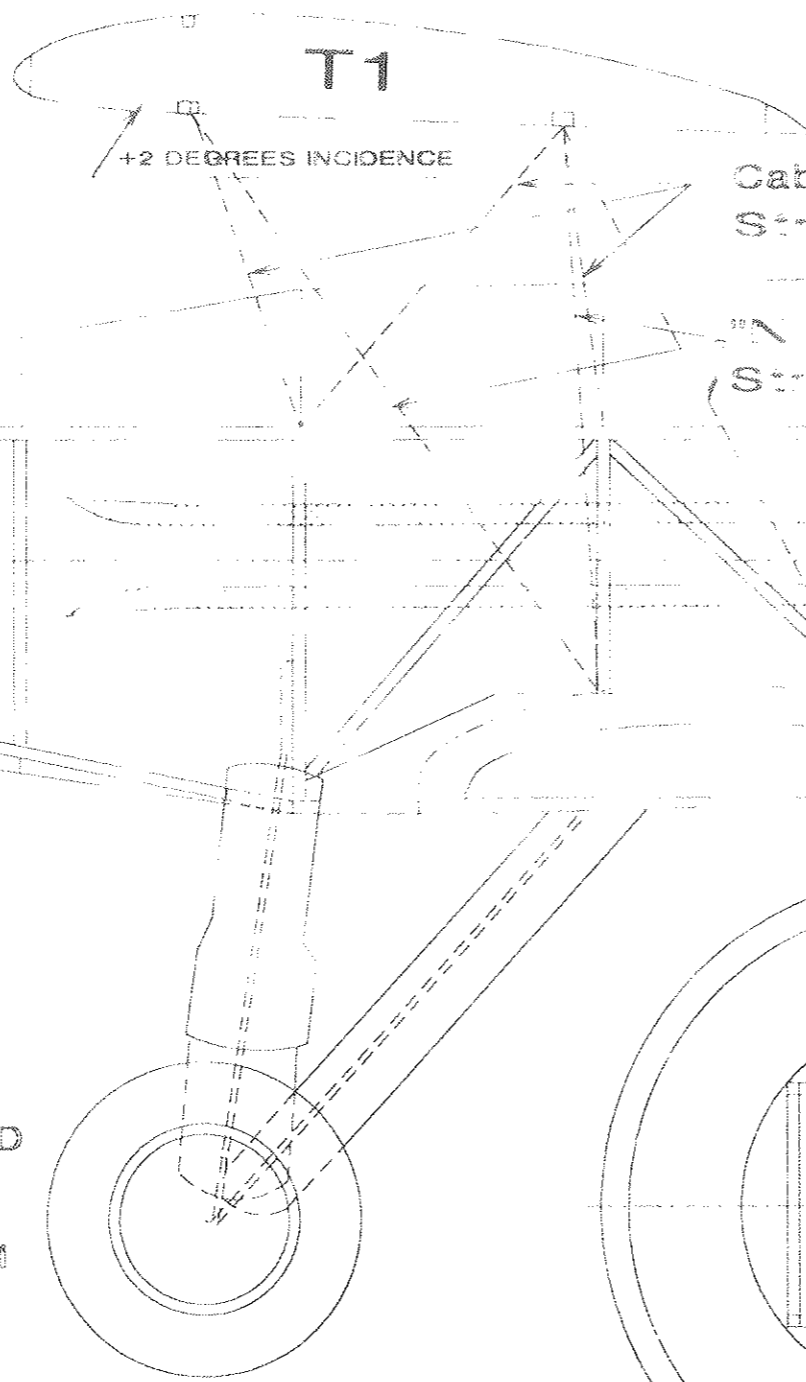
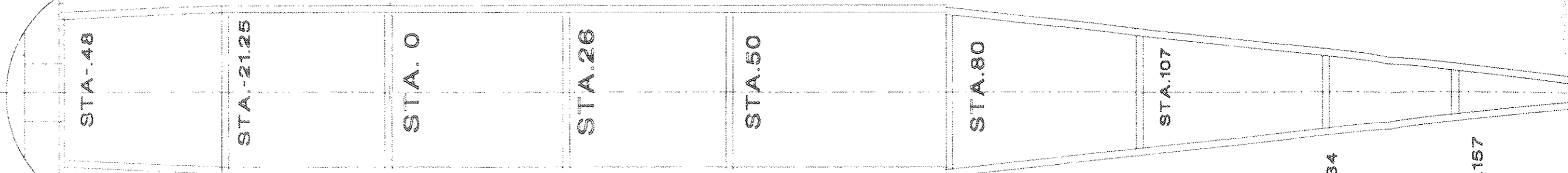
CURTISS GULFHAWK, CIRCA
1929-31 FAC NATS MARK 9
BASED ON PHOTOS FROM CED
GALLOWAY, PETER BOWERS,
SEVERAL MAGAZINES AND PETER
WESTBURGS DRAWING OF 1A
DRAWN IN DESIGN CAD 2D
USING SCANOVER BY DOUG AND
SANDY WILKEY

PATTERNS FOR
 WRIGHT
 CYCLONE
 TAKEN FROM
 COMET KIT OF
 GULFHAWK 2

SIMPLE COWL WITH ZEROX
 OF ENGINE ON 1/8TH Balsa
 FOR MORTALS DELUXE
 VERSION FOR BRUNING
 CYL.TYP 9 PLACES



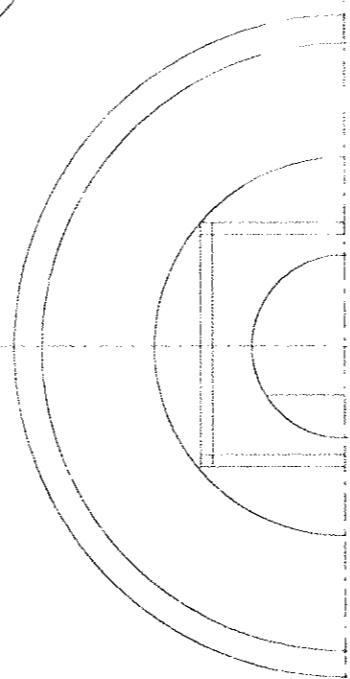
LOW PRESSURE
 TYPE Balsa
 WHEELS FROM OLD
 TIMER MODELS
 USE 1 5/8" OR 1
 3/4" RADIUS IS
 OFF 1/32"
 EITHER WAY.
 SORRY



ORIGINAL COVERED WITH ORIGAMI
 PAPER ON ENTIRE FUSELAGE TOP AND
 SIDES FROM REAR OF COCKPIT
 GENE DUBOIS, ACUSHNUT MA. HAS INVISIBLE
 BOND PAPER THAT DOES NOT SHOW UNDER
 TISSUE BRUNING USES TRACING VELLUM

GULFHAWK

STRINGERS NOT SHOWN, PLACE AS DES

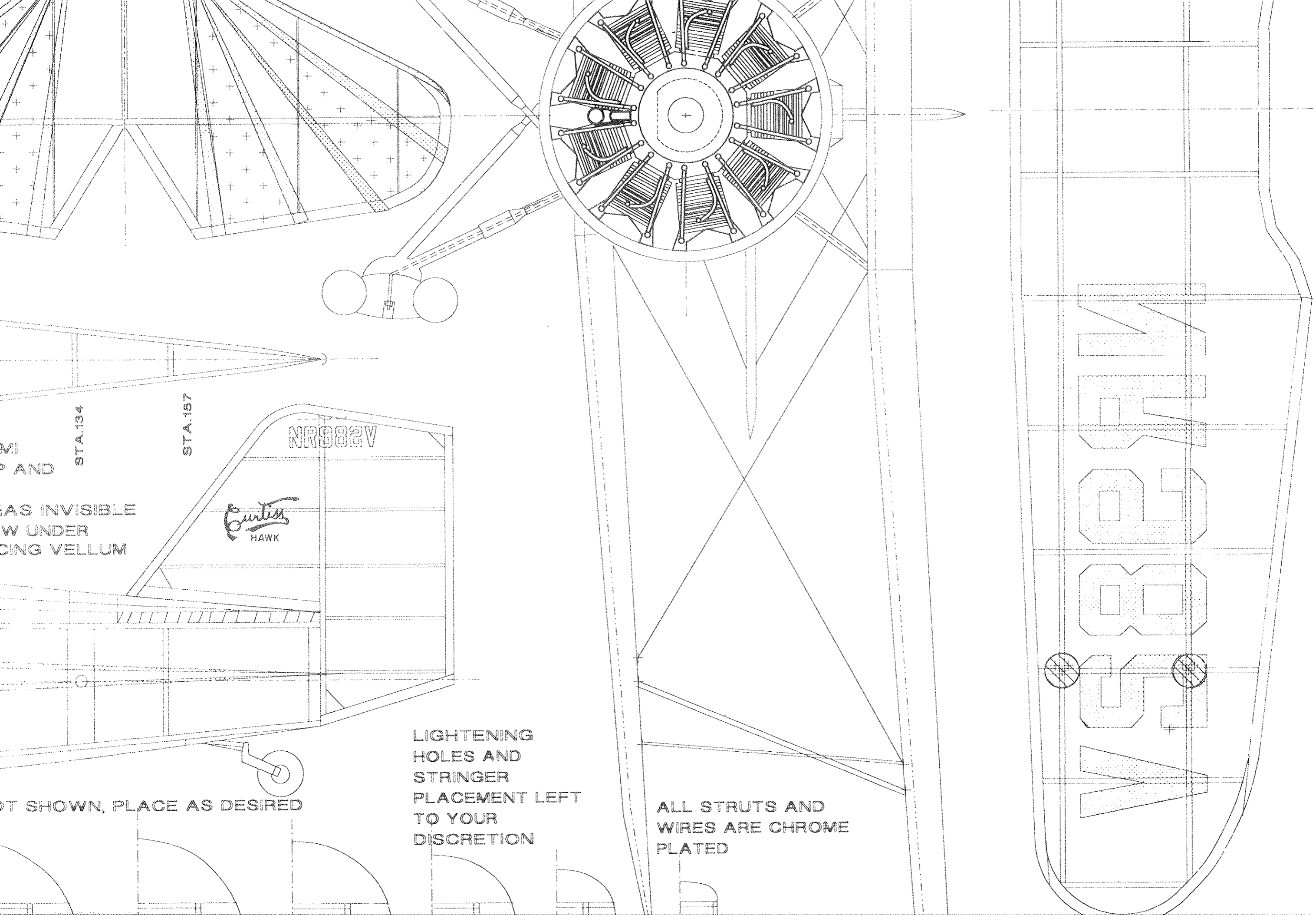


STA.-21.25

STA.0

STA.26

STA.50



MI
AND

STA.134

STA.157

AS INVISIBLE
W UNDER
ING VELLUM

Curtiss
HAWK

NR982V

OT SHOWN, PLACE AS DESIRED

LIGHTENING
HOLES AND
STRINGER
PLACEMENT LEFT
TO YOUR
DISCRETION

ALL STRUTS AND
WIRES ARE CHROME
PLATED

W
A
O
O
G
V

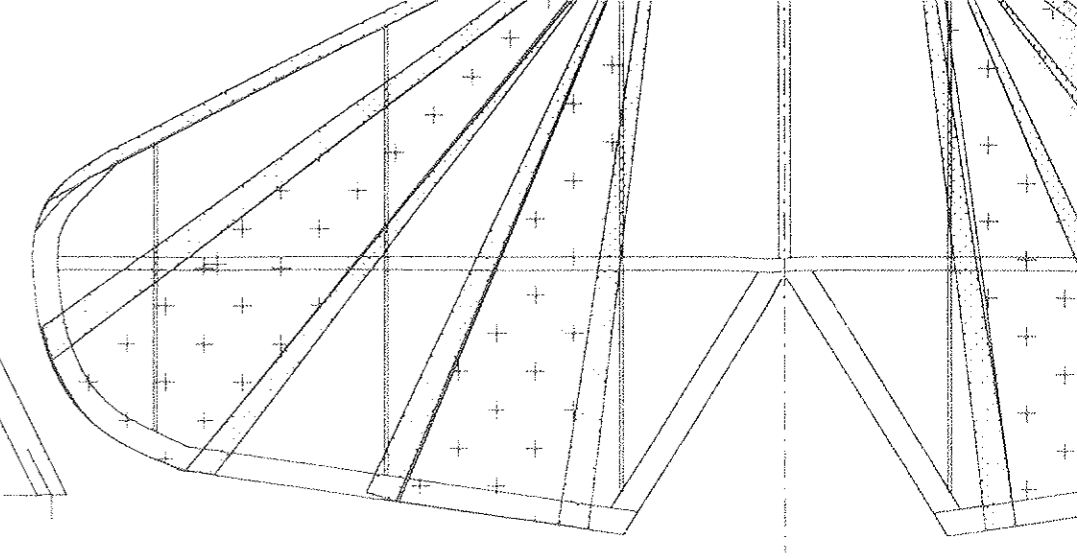
+2 DEGREES
 FRONT AND REAR
 STRUT 8/16" MIDDLE
 STRUT 3/16"

PINS INTO
 SUPPORT
 BLOCKS

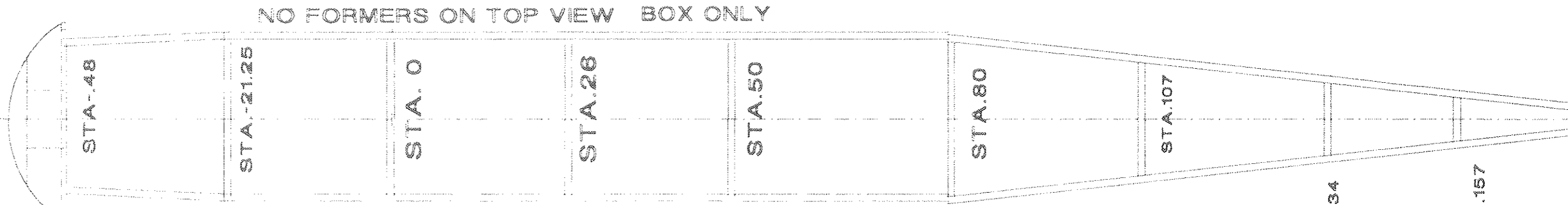
PIN TO SUPPORT BLOCKS

FRONT

ALL STRUTS
 1/8" WIDE. PIN
 INTO LONGERONS.



PATTERNS FOR
 WRIGHT
 CYCLONE
 TAKEN FROM
 COMET KIT OF
 GULFHAWK 2



NO FORMERS ON TOP VIEW BOX ONLY

STA. 48

STA. 21.25

STA. 0

STA. 26

STA. 50

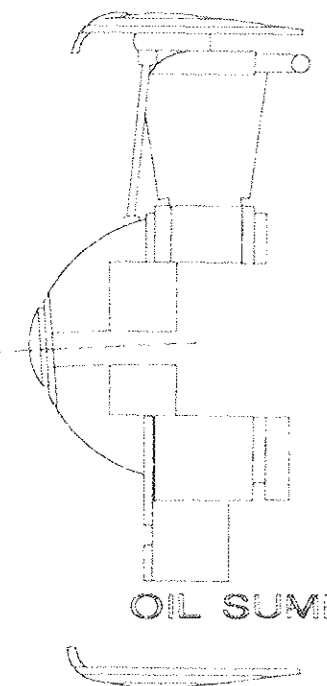
STA. 80

STA. 107

STA. 134

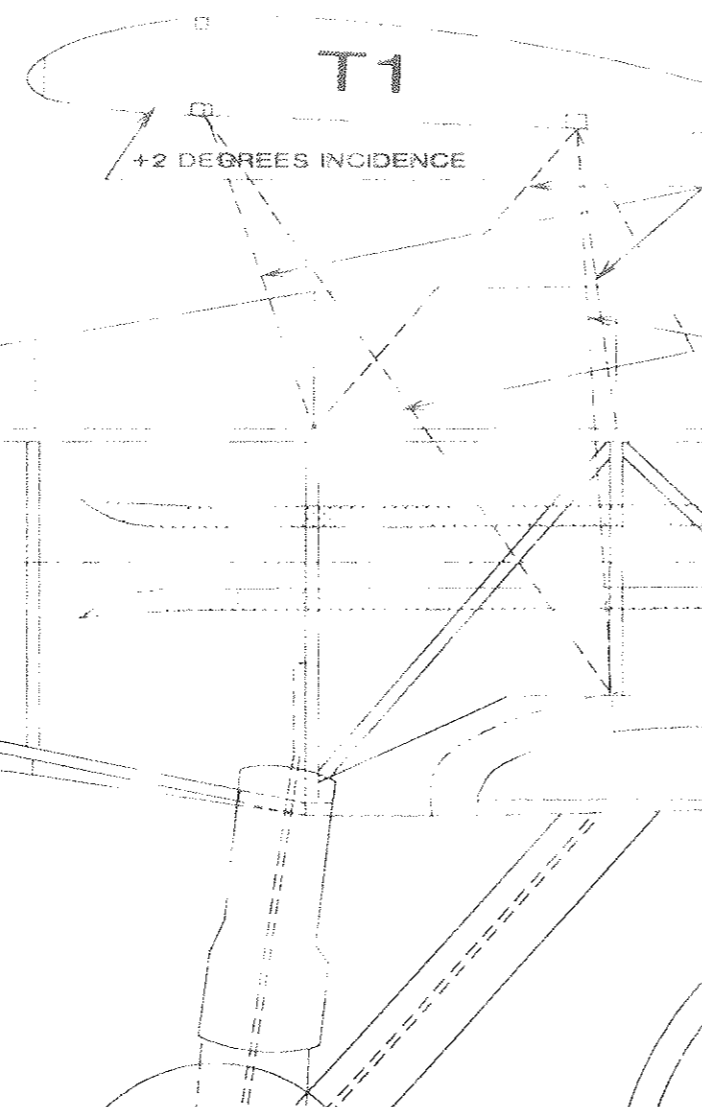
STA. 157

SIMPLE COWL WITH ZEROX
 OF ENGINE ON 1/8TH BALSA
 FOR MORTALS DELUXE
 VERSION FOR BRUNING
 CYL. TYP 9 PLACES



OIL SUMP

LOW PRESSURE
 TYPE BALSA



T1

+2 DEGREES INCIDENCE

Cabane
 Struts

Struts

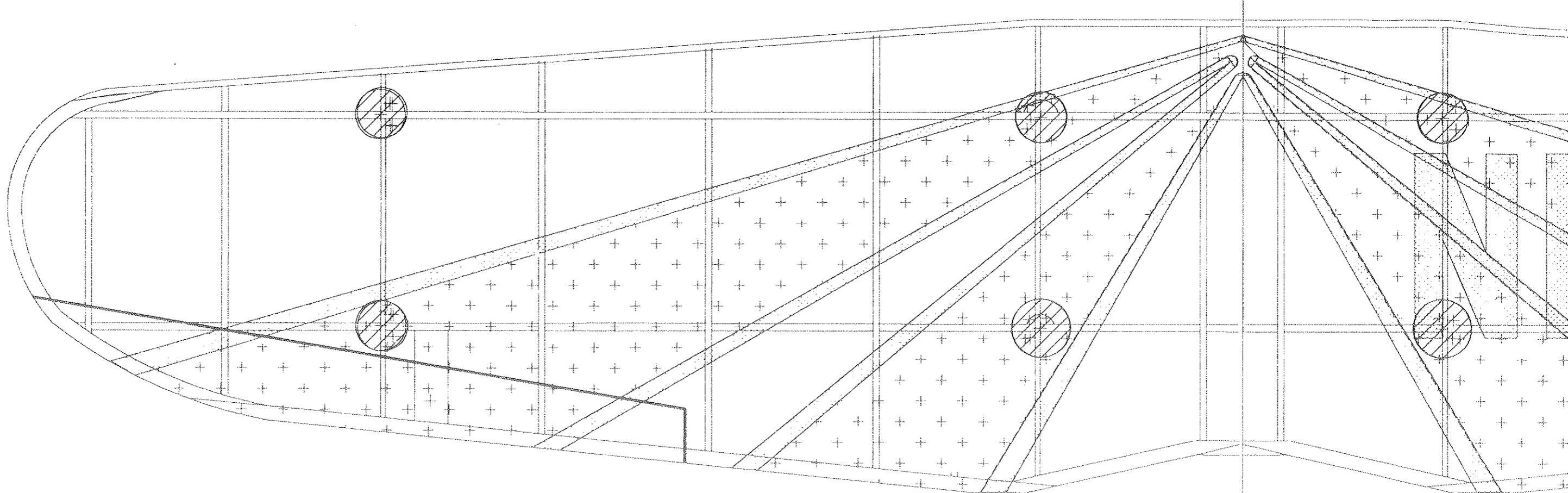
AL WILLIAMS

GULFHAWK

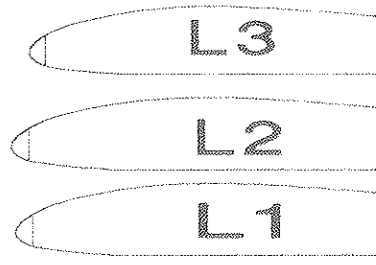
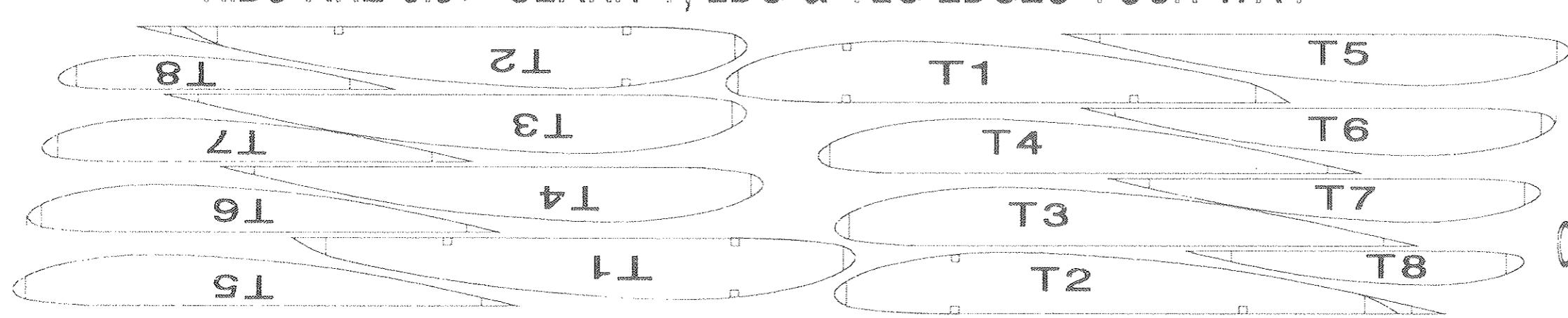
ORIGINAL COVERED WITH ORIGAMI
 PAPER ON ENTIRE FUSELAGE TOP AND
 SIDES FROM REAR OF COCKPIT
 GENE DUBOIS, ACUSHNUT MA. HAS INVISIBLE
 BOND PAPER THAT DOES NOT SHOW UNDER
 TISSUE BRUNING USES TRACING VELLUM

STRINGERS NOT SHOWN, PLACE AS DES

CURTISS GULFHAWK DRAWN ESPECIAL

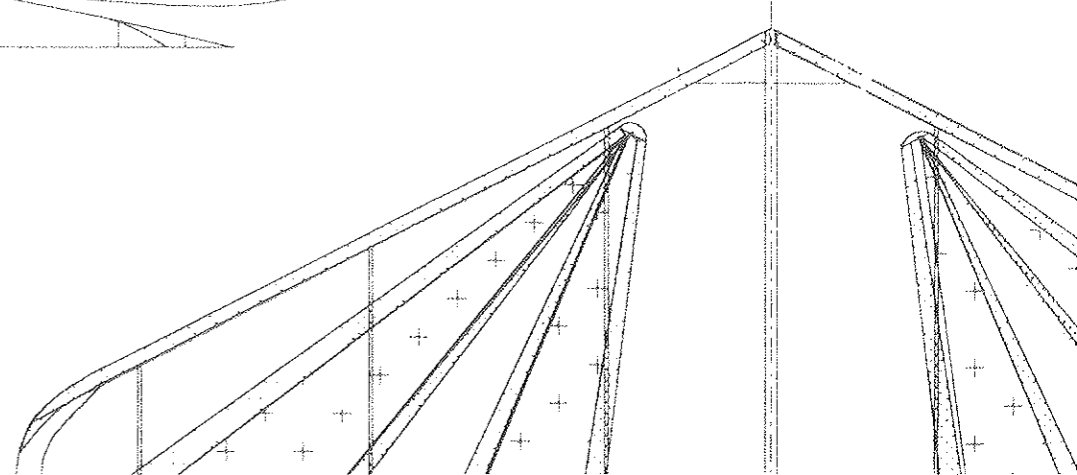
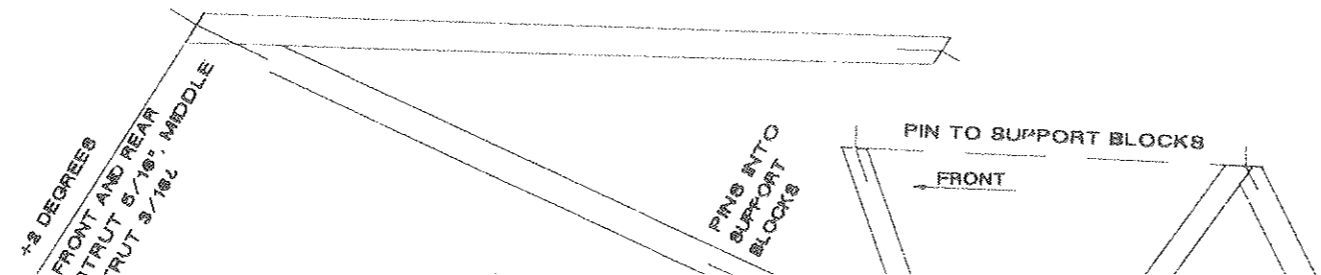


RIBS ARE 9.5% CLARK Y, LDG & TLG EDGES YOUR WAY

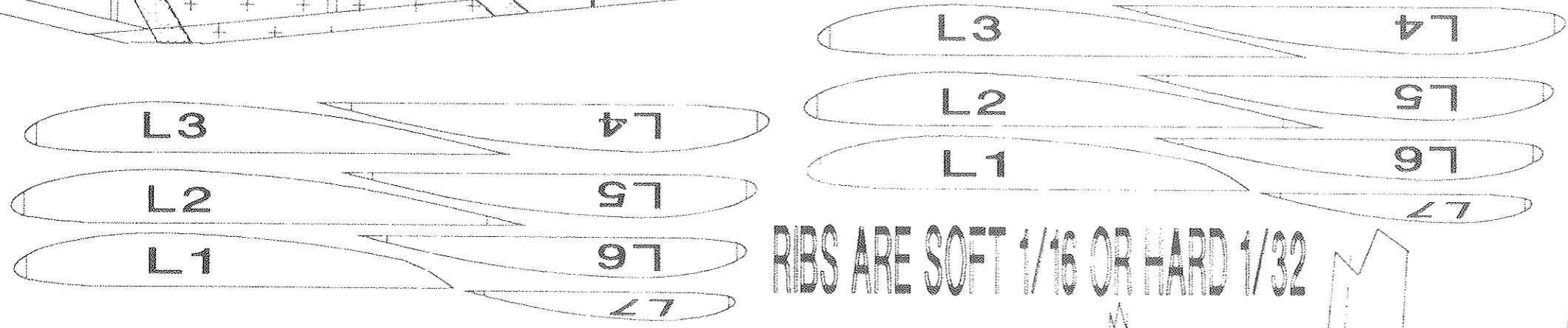
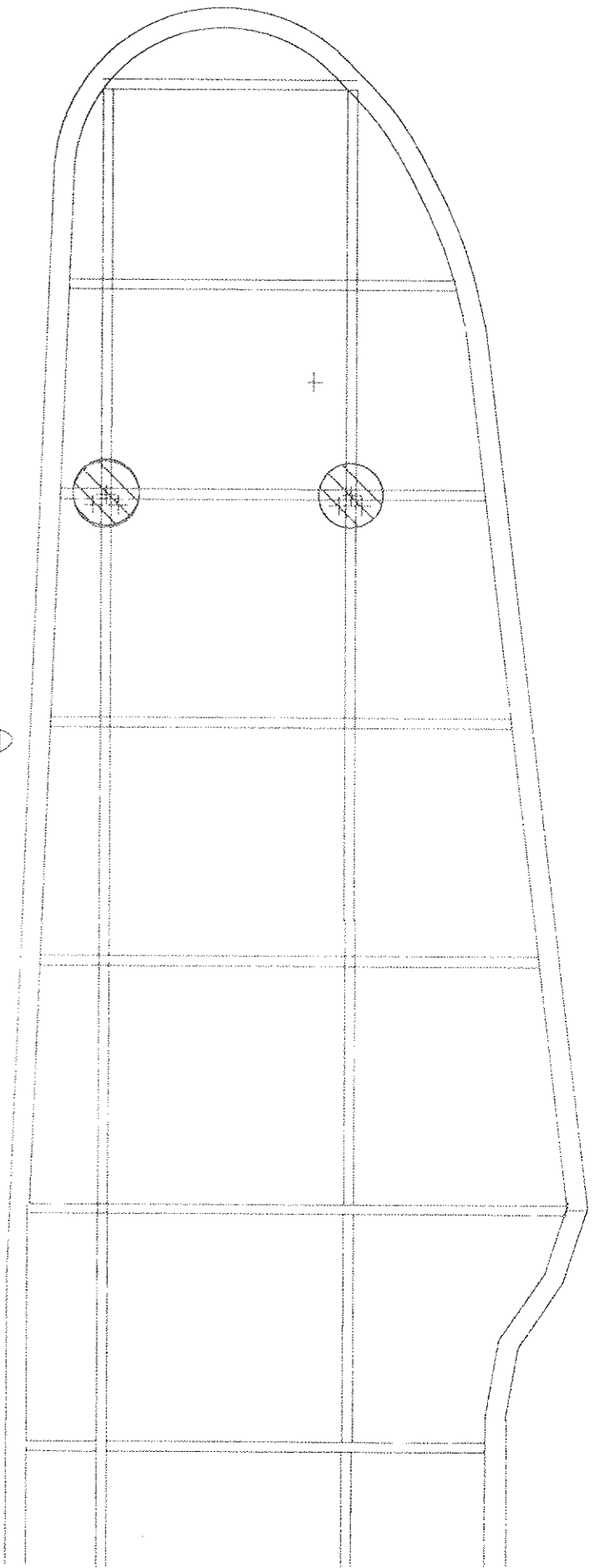
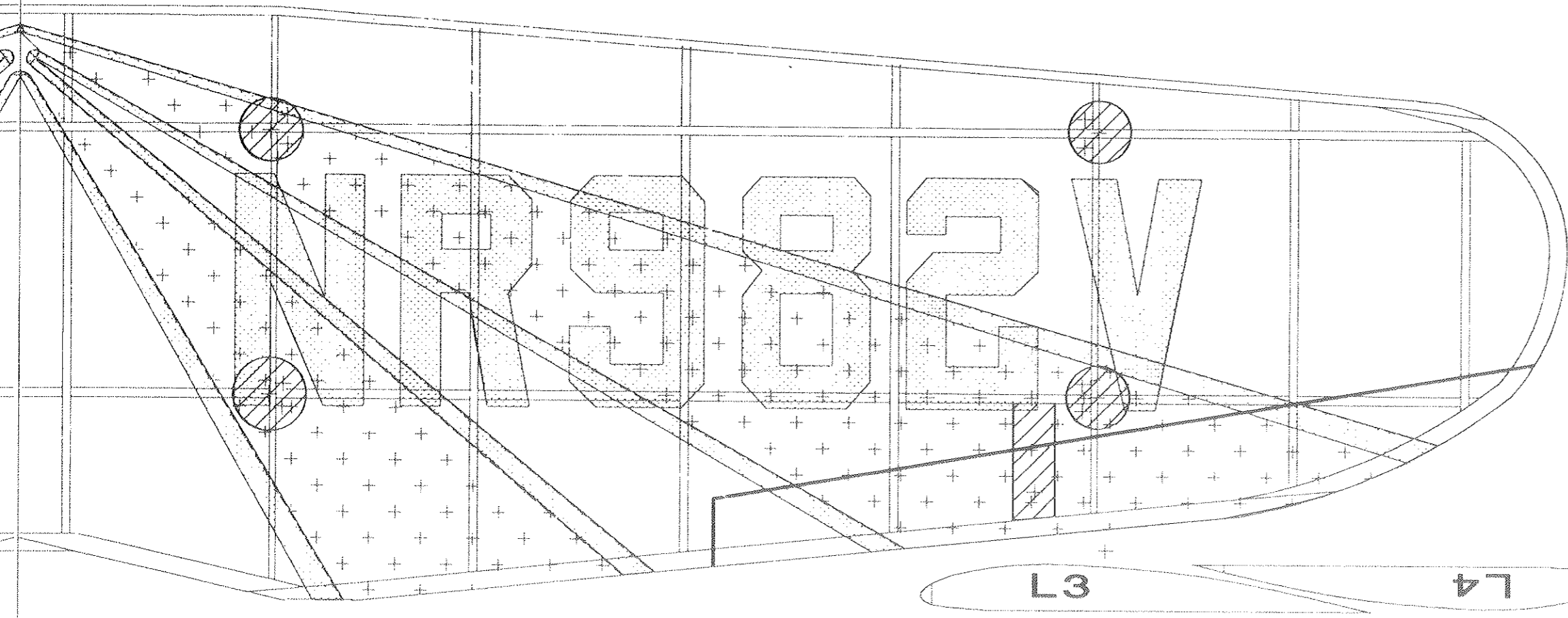


CUT SPAR SLOTS AFTER RIBS ARE GL

ENTIRE ACFT. IS GULF ORANGE, TRIM IS CURTISS BLUE, AND SUNBURST IS WHITE WITH BLUE EDGES. NUMBERS BELIEVED TO HAVE BEEN BLUE, BUT ONE SOURCE SAYS BLACK



IN ESPECIALLY FOR FAC NATS, MARK 9



RIBS ARE SOFT 1/16 OR HARD 1/32

SPAR SLOTS AFTER RIBS ARE GLUED IN PLACE

