

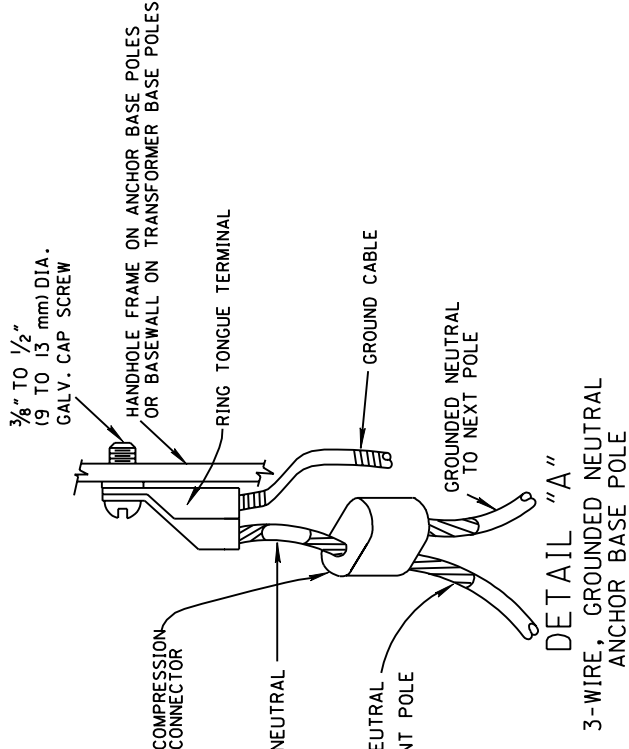
NOTES

1. Provide sufficient slack in all cables to permit bringing kits outside of pole base through handhole of anchor base poles or door in transformer base poles.
2. Fuses for connector kits shall be as follows:

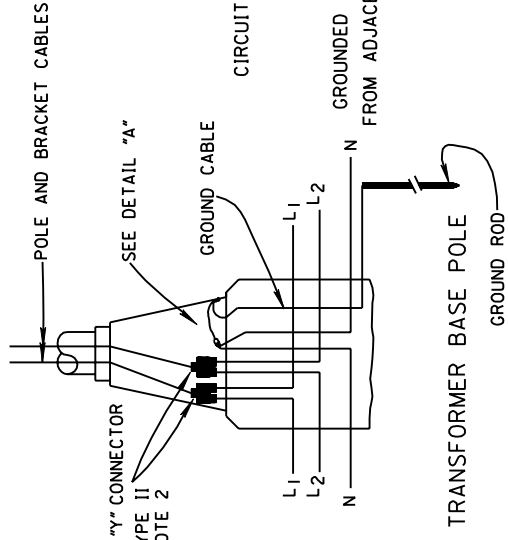


Any standard midjet ferrule type fuse, (except glass tube) may be used in this connection.

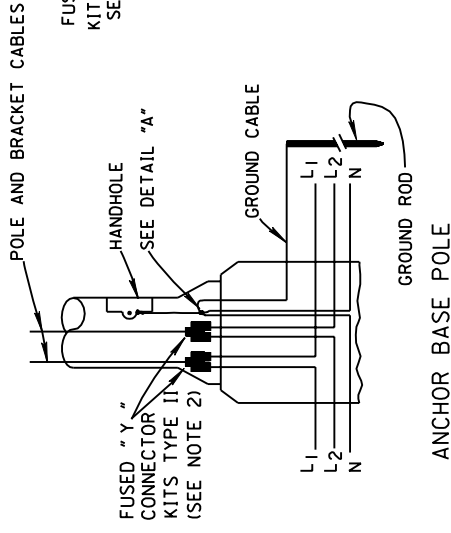
Fuses rated 600 volts and 10 amperes, minimum shall be used unless otherwise specified.



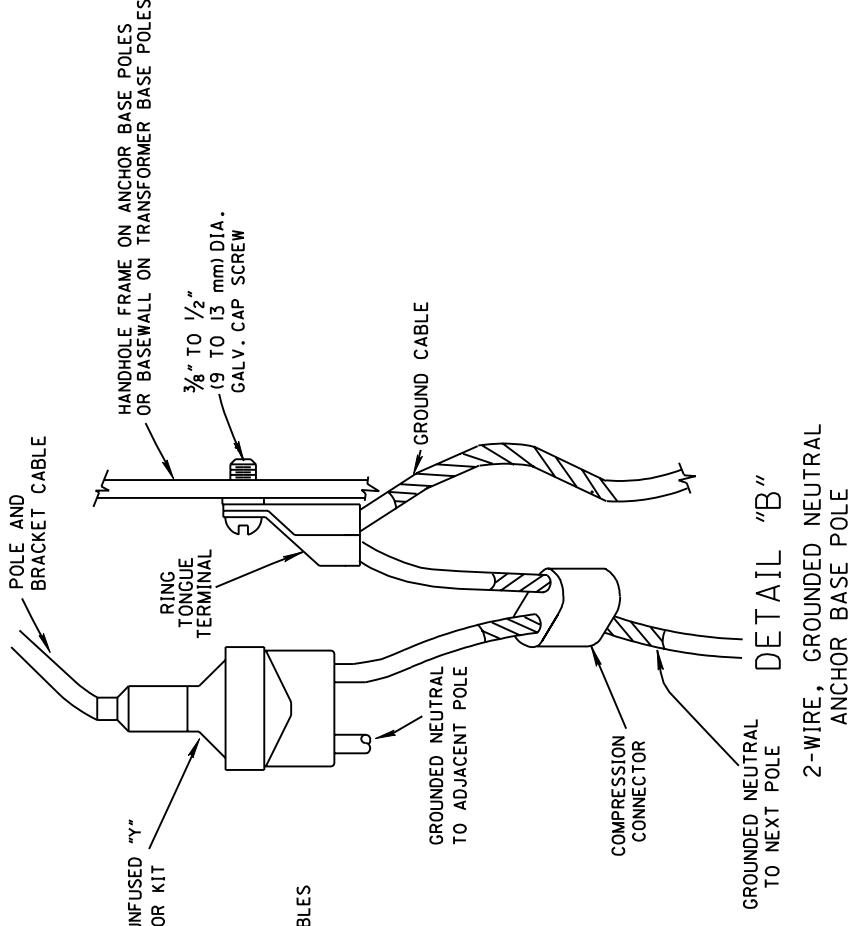
DETAIL "A"
3-WIRE, GROUNDING NEUTRAL ANCHOR BASE POLE



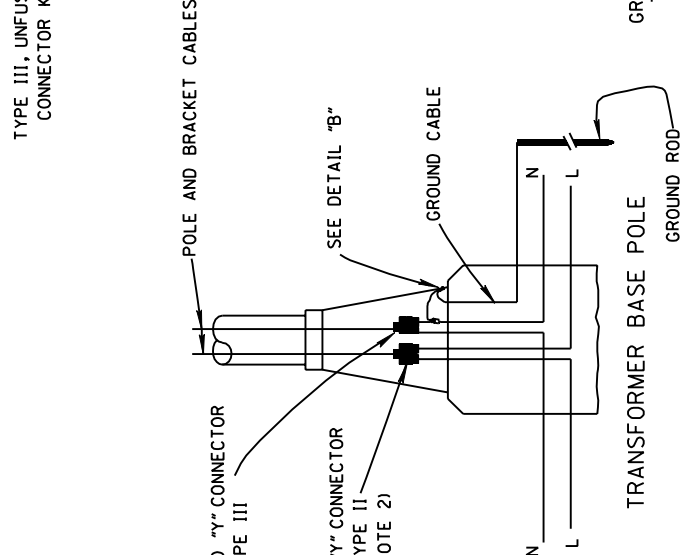
120/240
240/480 VOLTS, THREE WIRE
277/480



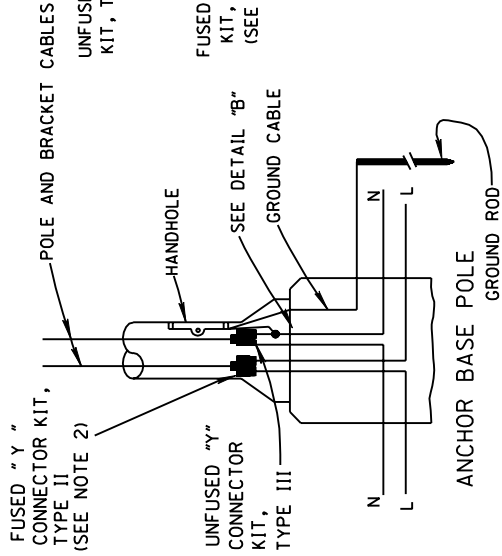
ANCHOR BASE POLE



DETAIL "B"
2-WIRE, GROUNDING NEUTRAL ANCHOR BASE POLE



120 VOLT, TWO-WIRE
277



ANCHOR BASE POLE