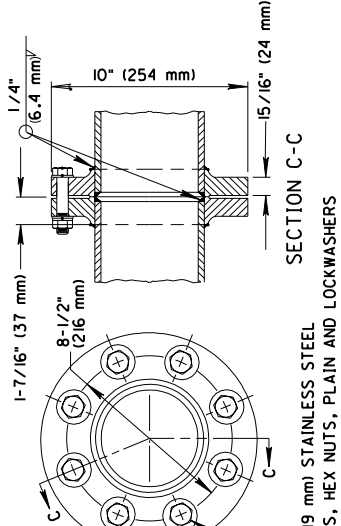
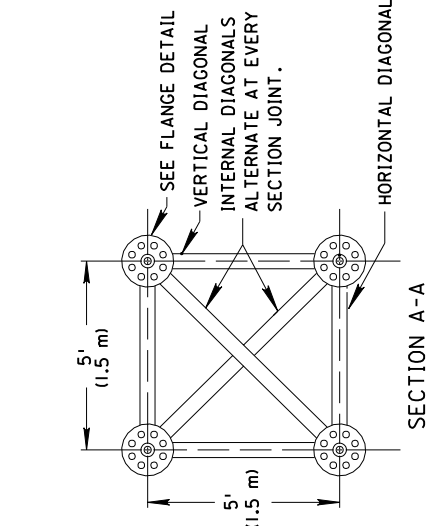
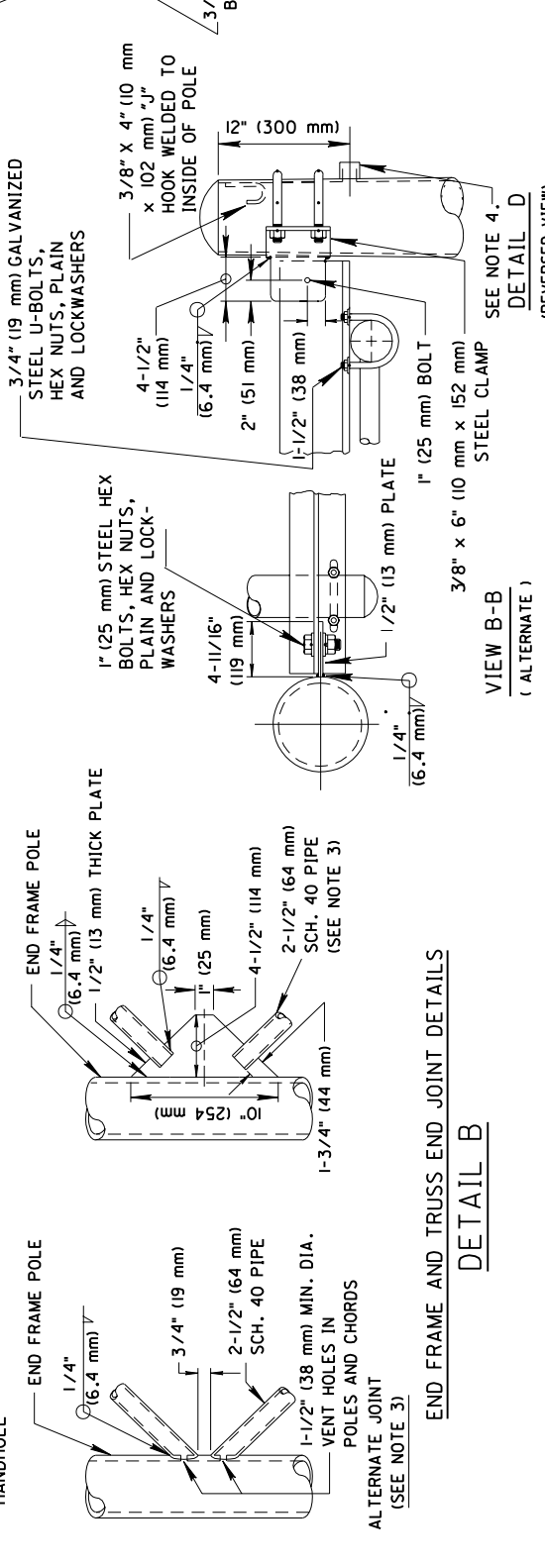
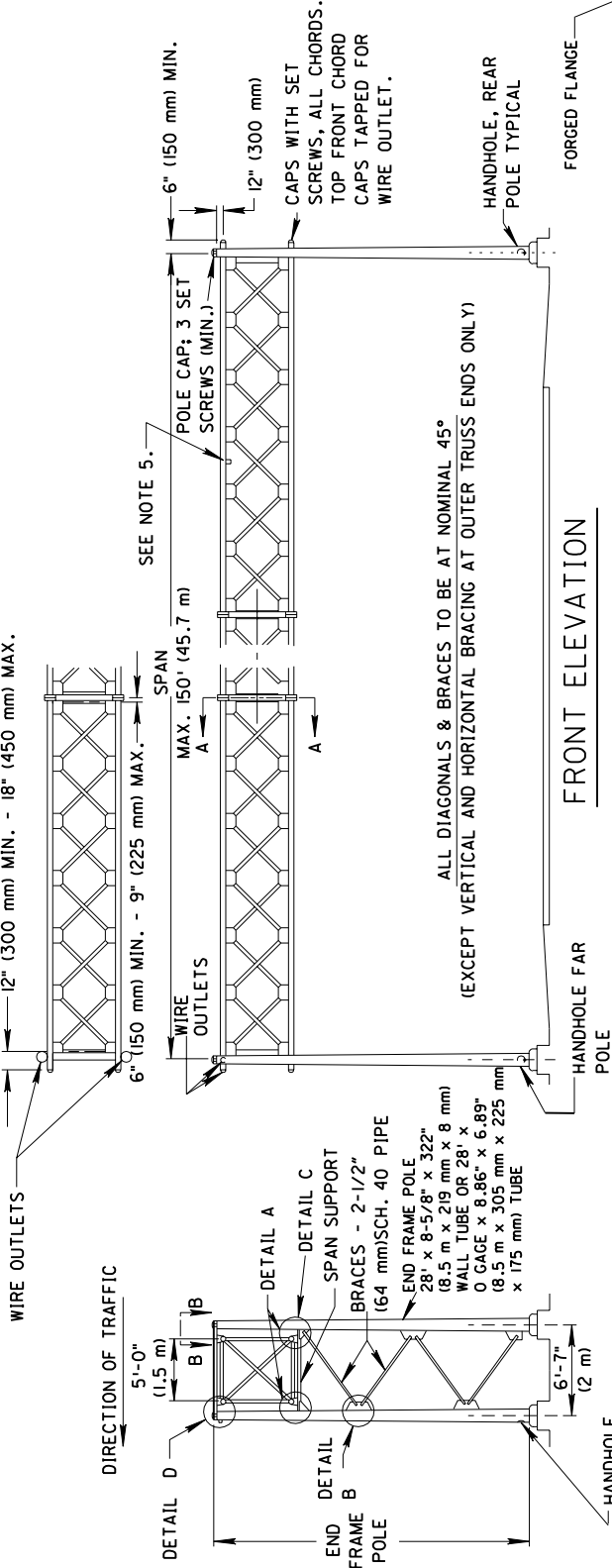
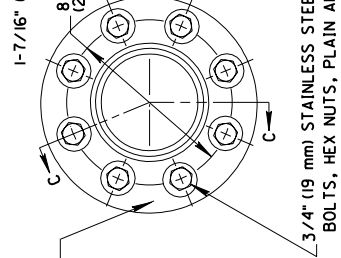


NOTES

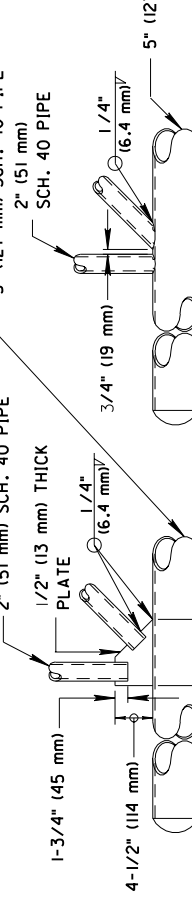
1. For sign attachment assemblies to be furnished with this support, construction details and location of handholes and switch enclosure mounting brackets, see drawings TC-22.10 AND TC-22.20.
2. For foundation details, see drawing TC-21.10.
3. Use nominal 2" (51 mm) schedule 40 pipe for bracing members in the truss. One internal diagonal is required at each end of each section.
4. Weld one threaded steel 1-1/4" (32 mm) pipe coupling or short nipple to the outside of each end frame pole as shown in detail D. Remove all sharp edges inside the pole and pipe coupling.
5. Weld one threaded steel 1-1/4" (32 mm) pipe coupling or short nipple to the front top chord of the truss approximately 12" (300 mm) outboard of the first sign bracket for each sign. Remove all sharp edges inside the chord and pipe coupling.
6. Camber the truss a minimum of 1" (25 mm) for a span of 50' (15.2 m) or less. Increase the camber 1/4" (6.4 mm) for each 5' (1.5 m) of span over 50' (15.2 m).
7. Internal diagonals only may be relocated from the indicated position to avoid weld joint overlap.
8. Provide a removable galvanized cast iron plug for all unused couplings and wire outlets.



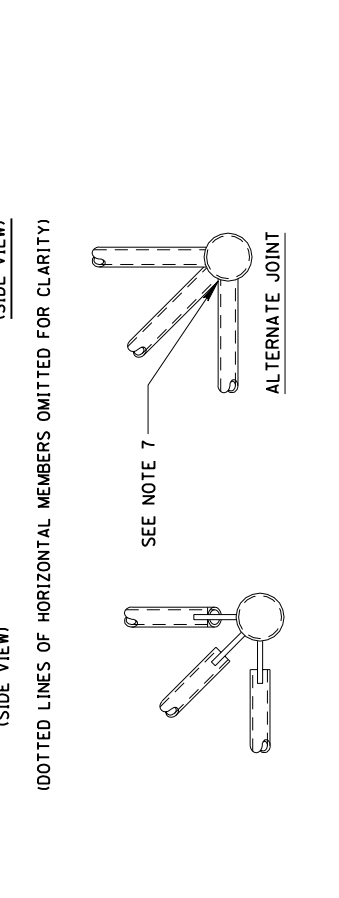
FLANGE DETAIL



UPPER SPAN SUPPORT

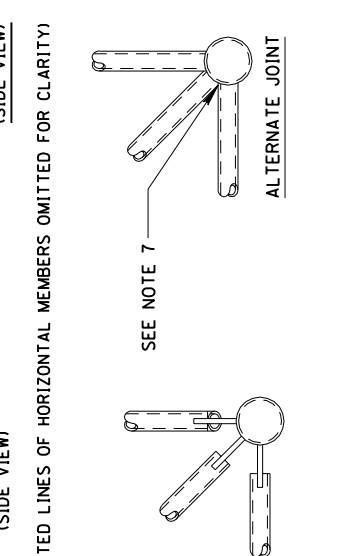


POLE BASE DETAIL



TRUSS END JOINT DETAILS

DETAIL C



SECTION D-D

