

Signage

Signage in the Annex and Pedestrian Tunnel connecting the State House to the Annex contains Braille and raised lettering.

Legislative Information

The Office of Legislative Services (OLS) Legislative Information and Bill Room, located in room B-1 in the basement of the State House Annex, answers questions regarding the legislative process, legislative activity, the status of bills, legislative committee/commission membership, and legislative district and contact information. The phone number is 609-292-4840, or toll free in NJ, 1-800-792-8630.

The office operates a TDD (Telecommunications Device for the Deaf) system at (toll free in NJ) 1-800-257-7490, or 609-777-2744. These telephone lines must be used in conjunction with TDD equipment.

Large Size Print Materials - Large print versions of bills, resolutions and committee statements can be obtained from the OLS Legislative Information and Bill Room. Upon request, the office may produce several publications in large versions as well, including the *Legislative Calendar*, *New Jersey Legislature Roster of Members*, *The Legislative Process in New Jersey*, *Visit the New Jersey State House*, *Visit New Jersey's Capitol Complex* and *Information for Visitors with Special Needs*.

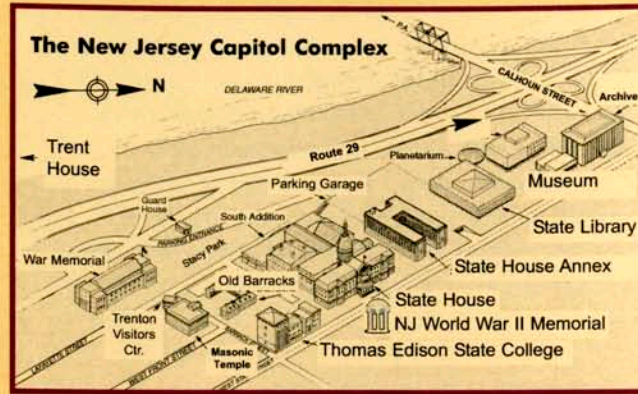
Other items can be enlarged or transferred onto audio cassette by request.

Tours

While the public galleries are not wheelchair accessible, arrangements will be made for the floor of both legislative chambers to be available to visitors in wheelchairs. Advance reservation for this accommodation is appreciated.

Sign language interpreters are available for persons with hearing loss while on tour. Please inform the Tour Office at least five working days in advance of your scheduled tour to make arrangements.

For tour information and reservations call the State House Tour Office at 609-633-2709.



Parking - Specially marked spaces for visitors with special needs are available in the Capitol Complex Parking Garage and on the south side of West State Street between the State House and Thomas Edison State College.

State House Entrances - The West State Street entrance has two exterior wheelchair-accessible ramps and is equipped with an automatic door.

State House Annex Entrance - The Annex front entrance is equipped with a wheelchair-accessible ramp and power-assisted doors.

The Pedestrian Tunnel connecting the State House and Annex accommodates wheelchair users. ADA-compliant entrances and elevators within the State House make commutation to the tunnel possible from all parts of the building.

Security - All visitors should be prepared to show a valid identification and go through a security screening.

More Information - For more information regarding special needs, contact the Administrative Unit of the Office of Legislative Services at 609-984-6818.



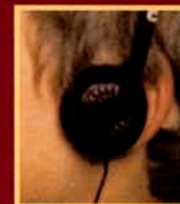
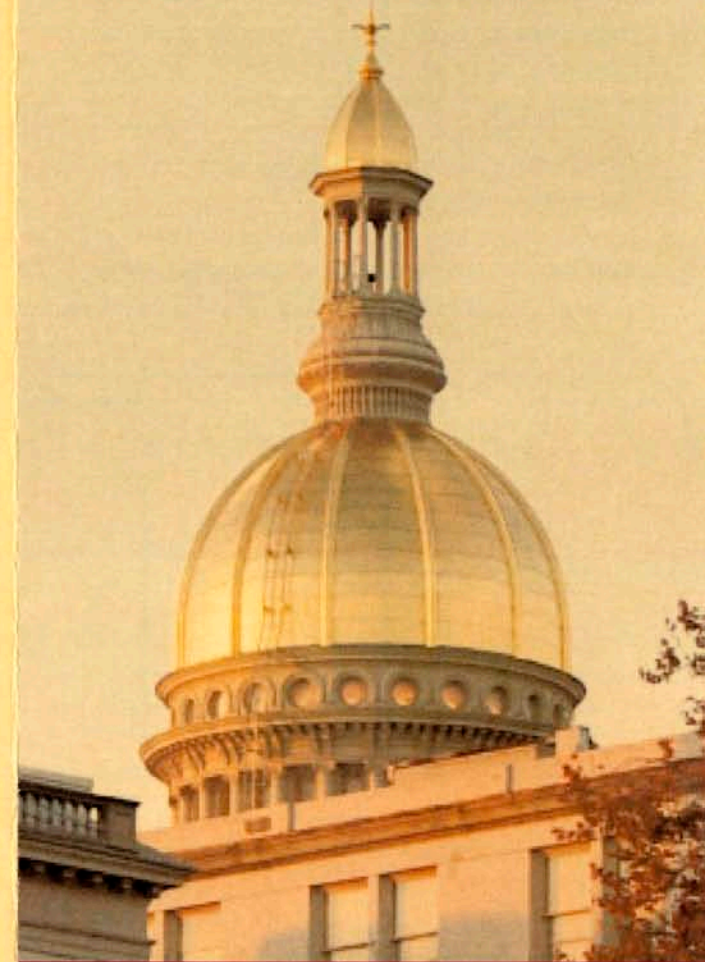
Office of Legislative Services

Office of Public Information
State House Annex, P.O. Box 068
Trenton, NJ 08625-0068
www.njleg.state.nj.us



New Jersey Capitol Complex

INFORMATION FOR VISITORS WITH SPECIAL NEEDS



New Jersey's State House is one of the oldest capitols in continuous use. Since the original structure was built in 1792, numerous additions and modifications have been made.

In 1987, a large renovation restored the legislative portion of the building. Making the historic structure meet barrier-free access sub-code requirements was a major challenge. In areas where a waiver was granted, alternate arrangements were made to ensure access for every citizen.

Legislative Chambers, Offices and Committee Rooms

On session days, sergeants-at-arms of both Houses are required to grant visitors using wheelchairs access to the chamber floors through the first floor main entrance

(at the rear of each chamber). Legislative Leadership offices, located on the second floor in the legislative area of the State House, are accessible by key-operated platform lifts. The keys to both lifts may be obtained from the Assembly Clerk's office in room L214.

The legislative chambers and committee rooms are equipped with built-in, ADA-compliant, FM assisted-listening devices for persons with hearing loss. Headsets and receivers are available when requested 24 hours in advance. Specific arrangements can be made by calling:

Legislative Committee Rooms: 609-984-6818

Senate Chamber: 609-292-6828

General Assembly Chamber: 609-292-5222

Real-time reporters and sign language interpreters are available with a minimum of five working-days notice by calling 609-984-6818.

Elevators

The State House - While both elevators in the legislative area of the State House are wheelchair accessible, the one noted for handicapped use stops at Level B and avoids the four steps that separate Level B from B1. Please note that this elevator is not reserved solely for visitors with special needs. An elevator located along the main corridor of the State House services Levels B, 1, 2, and 3.

The Annex - Three wheelchair-accessible elevators in the center of the Annex provide access to each of the building's main levels. Sub-levels of the basement and first floor in the east wing are also serviced by a wheelchair-accessible elevator.

Restrooms

The State House - Floors A, B1, 1, 2, and 3 in the legislative area of the State House have public restrooms that are accessible to visitors with special needs, including wheelchair users.

The Annex - Restrooms throughout the building contain sinks and lavatories which accommodate wheelchair users.

Public Telephones

The State House - Wheelchair-accessible phones are available in the main corridor of the South Addition and in the legislative area of the State House, near the elevator bank on Levels 1, 2, and 3. All public telephones in the legislative areas of the State House are equipped with a volume control to accommodate persons with hearing loss.

The Annex - Public phones in the Annex include units positioned for wheelchair users. All public phones are equipped with a volume control for persons with hearing loss. A TDD (Telecommunications Device for the Deaf) station is located at the first-floor phone station.

