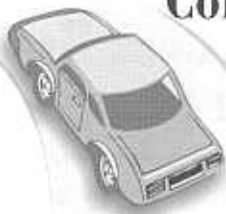




Respond to the Conditions.

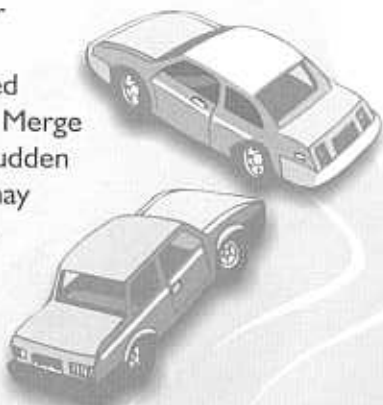


Driving speed should depend on road condition and visibility.

Posted speed limits are generally good guidelines, but motorists would be wise to slow to a safe speed if roads are treacherous or if visibility is limited.

Don't Slide Right In.

Motorists who need to change or merge lanes on icy or snowy roads should proceed with caution. Merge slowly since sudden movements may cause vehicles to skid.

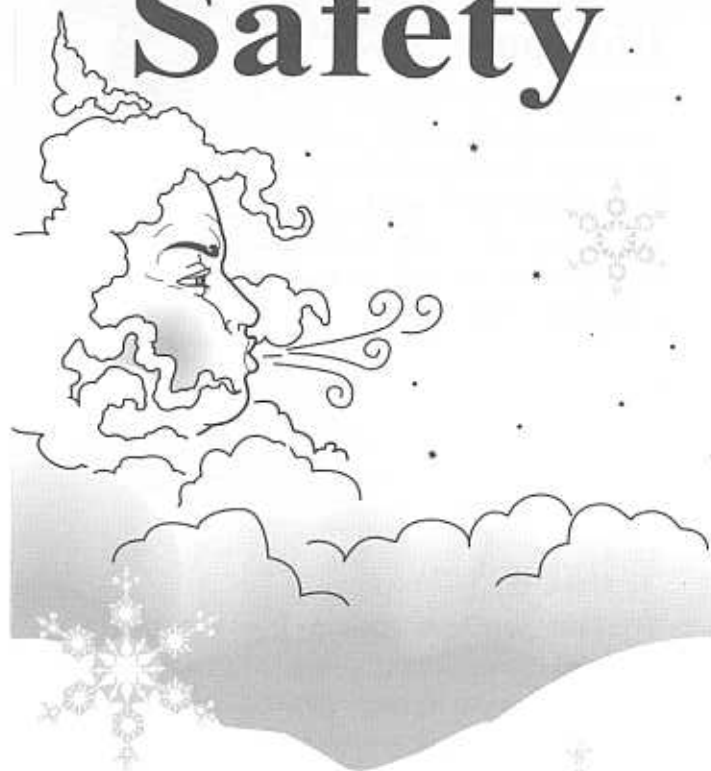


More Winter Driving Tips

- Buckle up every time you get in your car, van or truck. Help save lives: Be sure all vehicle occupants are belted. And buckle your babies, too – it's the law.
- Drive safe and sober.
- Stay awake and alert.
- Deer Don't Know Better...so watch for them – especially on 55 mph roads, between 6 p.m. and midnight, weekends, and 7-8 a.m. weekdays.
- Through your own courtesy on the road, show other drivers that road rage is a crazy way to drive.



Michigan Winter Travel Safety



If you need this information in an alternative format, contact:

MDOT Office of Communications
P.O. Box 30050, Lansing, MI 48909-9791
Phone: 517-373-2160
Web: www.mdot.state.mi.us

or

TDD/TTY through the Michigan Relay Center: 800-649-3777



Improving Michigan's total transportation system by efficiently delivering transportation products, services and information.

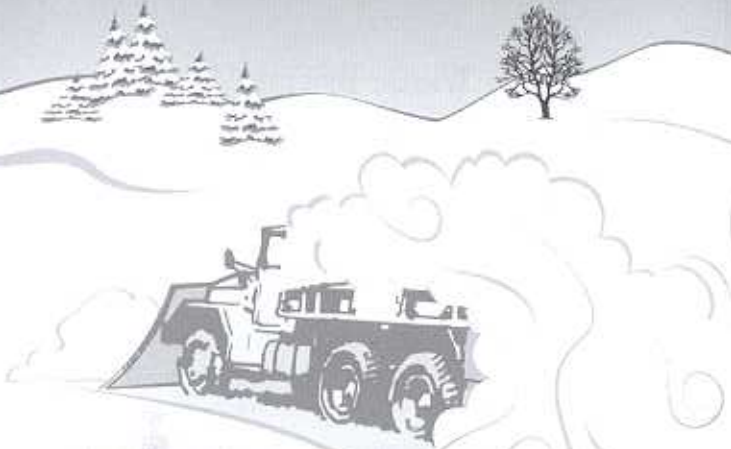


Did You Know...?

When cold air circulates around and under bridges it causes bridge temperatures to drop fast. Add high humidity in the air and you'll get an icy bridge. Bridges may be icy even when the approaching pavement is clear and dry. Motorists should take extra caution on bridges.

What's New...?

The Michigan Department of Transportation is testing innovative technology in areas experiencing the heaviest snowfall. A liquid anti-icer and de-icer – mixed with sand, magnesium chloride and/or salt – is being tested for its effectiveness in preventing ice and snow from bonding to road surfaces. A byproduct of agricultural products and beer and wine distilling, the nontoxic material is often used as an animal food additive. This noncorrosive material can be applied before a winter storm hits; is expected to be more effective than salt/sand mixtures alone; and easily washes off roadways and automobiles.



Don't Crowd the Plow.

Motorists should keep a safe distance between their vehicles and snowplows. Plowing may result in a cloud of snow, limiting visibility and may throw ice, rocks or salt. Always watch for the unexpected.

Anti-Lock Brakes? Don't Pump!

If your vehicle is equipped with anti-lock brakes, apply steady brake pressure to avoid skidding. Pumping brakes is recommended only for vehicles without anti-lock brakes.

