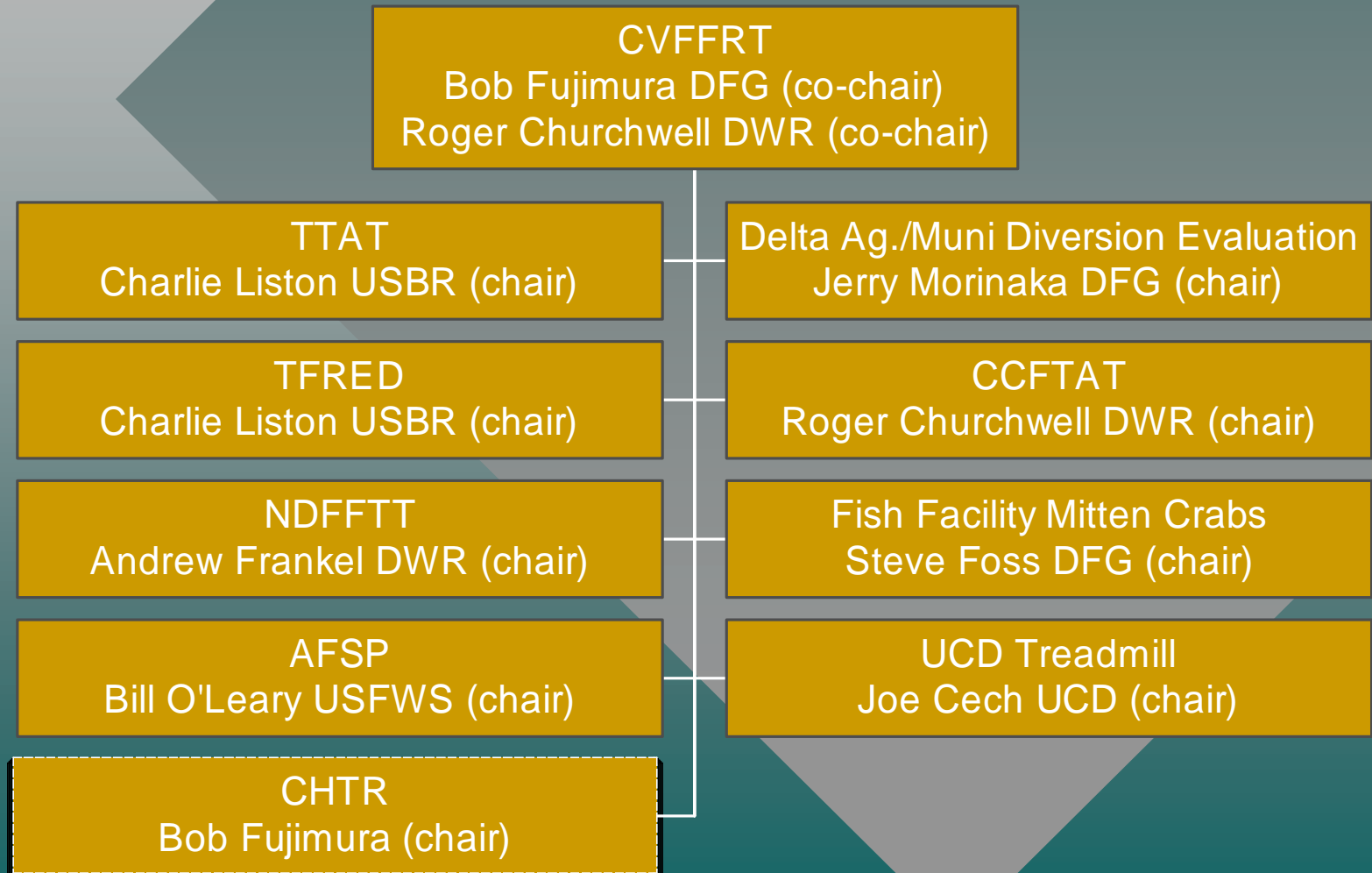


# Central Valley Fish Facilities Review Team and Grapes

# CVFFRT & Grapes



# Why CVFFRT

To coordinate Central Valley fish facility activities through the IEP

This is due to the expansion in fish protective facilities in the Central valley and to support the coordination of fish facility programs

CVFFRT supports and reviews products from the teams which makes up the grapes and also supports and reviews projects not in the grapes such as In-Delta Storage and other projects

# CVFFRT Concerns

- Fish facility issues in the central valley both biological and engineering
- Fish facility projects
- Fish facility criteria
- Fish facility research
- Fish facility conceptual development

# Central Valley Fish Facility Review Team (CVFFRT) Active Members

Roger Churchwell, DWR, Eng, (co-chair)

Bob Fujimura, DFG, Bio (co-chair)

George Heise, Eng, DFG

Dan Odenweller, Bio, NMFS

Jim Buell, Bio, Water Contractors

Richard Wantuck, Eng, NMFS

Darryl Hayes, Eng, CalFed

Leigh Bartoo, Bio, USFWS

Bill O'Leary, Eng USFWS

Tina Swanson, Bio, TBI

Serge Birk, Bio, CVP Contractors

Ryan Olah, Bio, USFWS

Charlie Liston, Bio, USBR

# CCFTAT

- Roger Churchwell, DWR
- Rick Wantuck, NMFS
- Dan Odenweller, NMFS
- Charlie Liston, USBR
- Roger Padilla, DWR
- Don Kurosaka, DWR
- Jerry Raasch, DWR
- Andrew Frankel, DWR
- Bob Fujimura, DFG
- Leigh Bartoo, USFWS
- Lev Kavvas, UCD
- Joe Cech, UCD
- Jim Buell, SWC
- Jim Odem, DWR
- Ryan Olah, USFWS

# TFRED and TFTF

- Charlie Liston, USBR
- Brent Mefford, USBR
- Sandy Borthwick, USBR
- Wren Frizell, USBR
- Mark Bowen USBR,
- Richard Wantuck, NMFS
- Ryan Olah, USFWS
- Roger Churchwell, DWR
- Bob Fujimura, DFG
- Ron Silva, USBR
- Leigh Bartoo, USFWS
- Mike Lee, USBR
- Don Kurosaka, DWR
- Jerry Morinaka, DFG
- Ron Ott, CalFed
- Brent Bridges, USBR