

SHERBROOKE
 PRECAST R.C LINTEL
 CHARCOAL COLOUR
 (SVC CODE: 15.375)
 FITZROY LINTEL FOR
 300 KERB STONES
 (SVC CODE: 15.424)

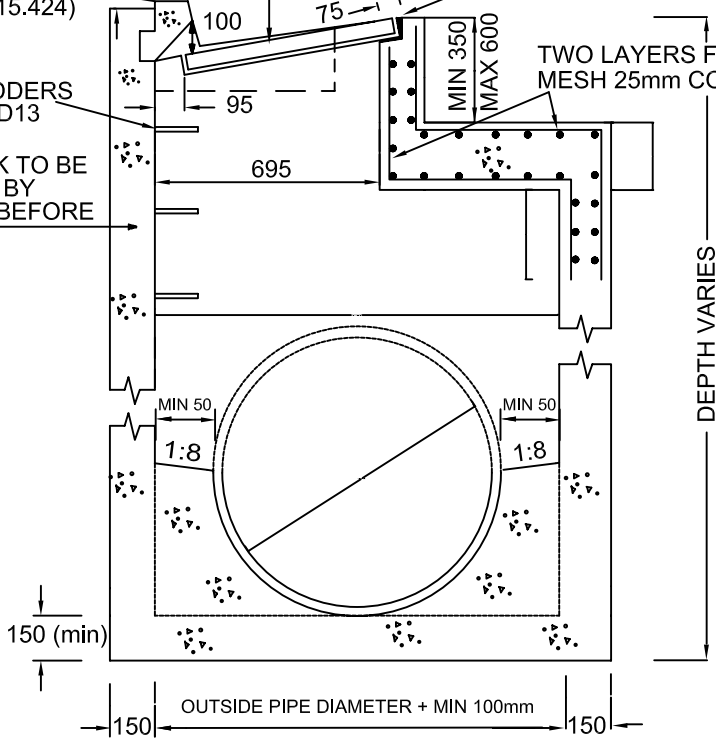
R&S WEAVE STYLE
 GRATE AND FRAME

PACK MORTAR OR GROUT
 AROUND FRAME

TWO LAYERS F81
 MESH 25mm COVER

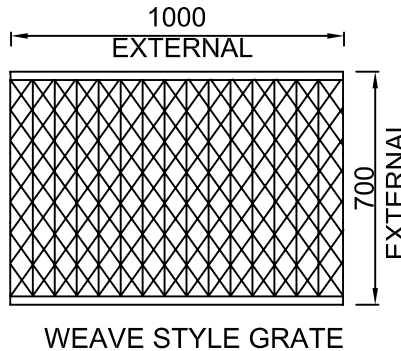
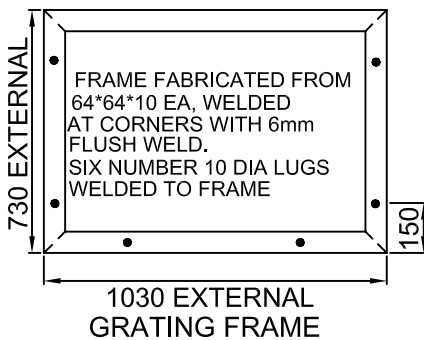
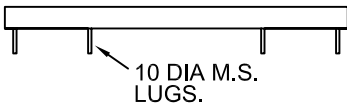
STEP
 IRONS/LADDERS
 REFER YSD13

FORMWORK TO BE
 APPROVED BY
 ENGINEER BEFORE
 POUR



GENERAL NOTES

1. ALL CONCRETE SHALL BE F'c 25MPa AT 28 DAYS
2. PITS DEEPER THAN 750mm SHALL BE FITTED WITH GALVANIZED STEP IRONS. (@ 300mm crs) REFER TO STANDARD YSD13
3. ALL STEELWORK SHALL BE HOT DIPPED GALVANISED
4. THE FLOOR OF THE PIT SHALL BE FORMED UP TO AT LEAST THE SPRINGING LINE.
5. ALL DIMENSIONS IN MILLIMETRES
6. CONCRETE TO BE VIBRATED IN PITS TO ENGINEERS SATISFACTION
7. CONCRETE TO BE POURED INTO PITS DIRECTLY OUT OF SUPPLY VEHICLES
8. F72 REINFORCEMENT IN WALLS OVER 2M DEEP
9. GRATE PERPENDICULAR TO KERB AND CHANNEL



CLASS "D" LOAD RATING GRATE

MATERIAL

- * Straight bars 50*12 bars Qty 17
- * Weave bars 40*10 bars Qty 16
- * End bars 50*25 bars Qty 2

* PRECAST PITS WITH THINNER WALLS AND LESS STEEL, MAY BE ACCEPTED WHERE THE MANUFACTURER CAN DEMONSTRATE THAT THE PITS HAVE ADEQUATE CAPACITY TO SUPPORT A COMBINATION OF THE FOLLOWING LOADS:

- LATERAL LOADS - EARTH PRESSURE WITH 210KN SURCHARGE
- HYDROSTATIC PRESSURE
 - COMPACTION PRESSURE (25 KPa MIN)

VERTICAL LOAD 210 KN

Yarra Standard: YSD13
Drawing Title:

HAUNCHED SIDE ENTRY PIT

Scale at A4 N.T.S
 Updated 29/11/07

