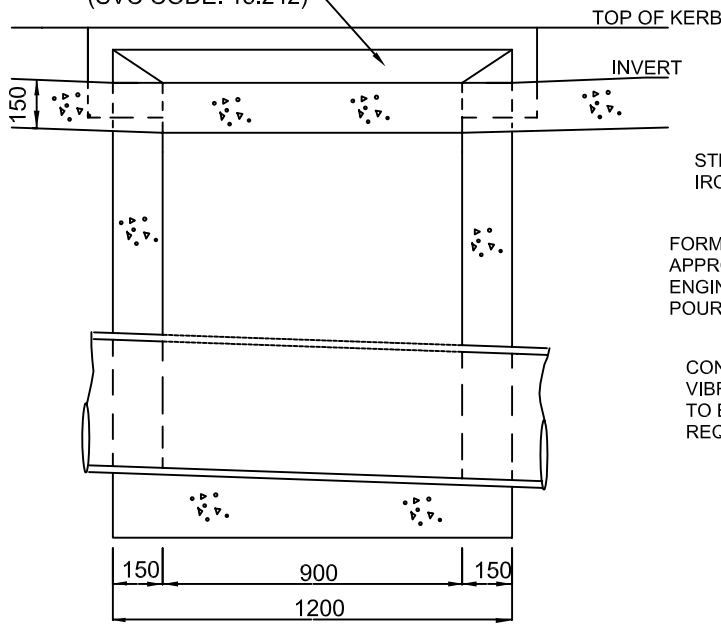
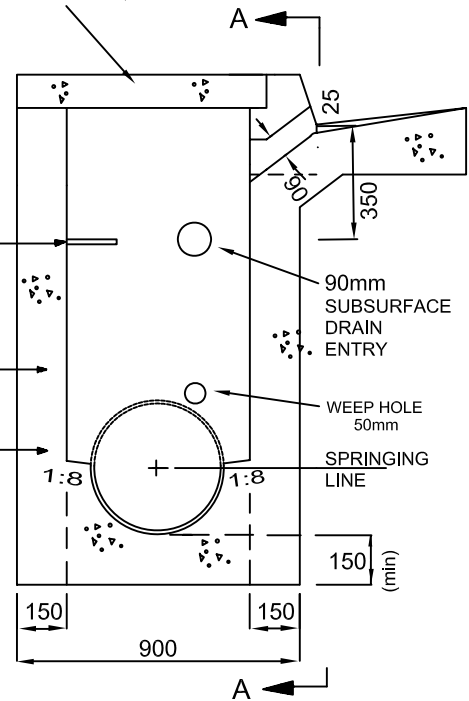


SHERBROOKE PRECAST R.C. LINTEL
CHARCOAL COLOUR (SVC CODE :- 15.375)
OR CHARCOAL COLOUR FITZROY
LINTEL FOR 300 KERB STONES
(SVC CODE: 15.242)

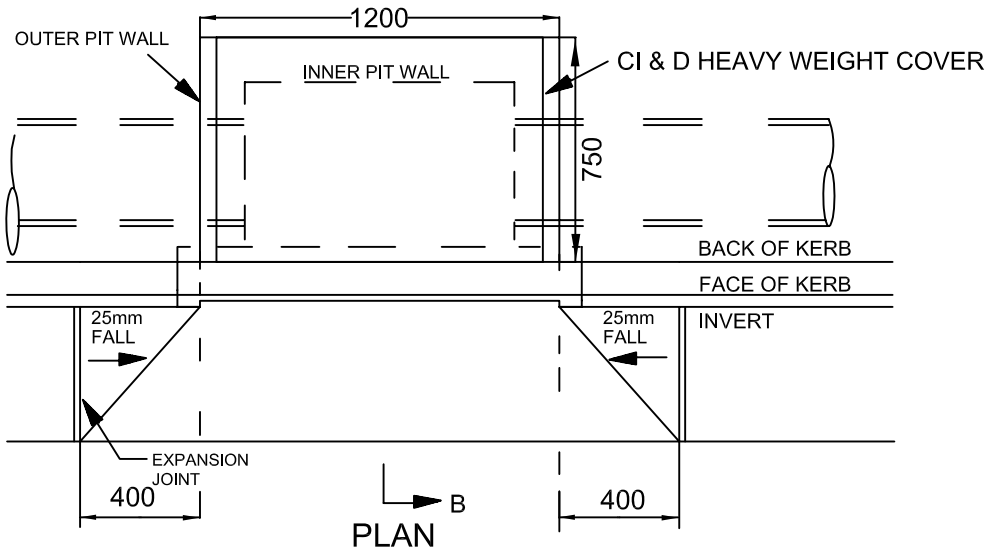
Ci&D HEAVY WEIGHT COVER
(CAST IRON) 1090*720 OVERALL
WIDTH OR APPROVED EQUIVALENT



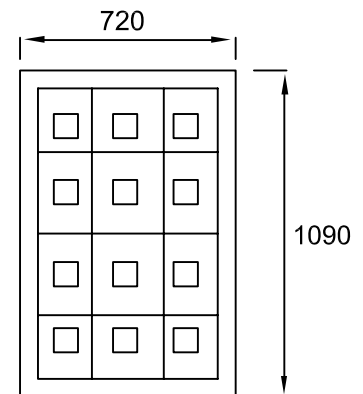
SECTION A-A



SECTION B-B



PLAN



HEAVY WEIGHT
COVER Ci&D
PRODUCT No.MH69H
OR APPROVED EQUIVALENT

GENERAL NOTES

1. ALL CONCRETE SHALL BE F'c 25Mpa AT 28 DAYS.
2. PITS DEEPER THAN 750mm SHALL BE FITTED WITH GALVANIZED STEP IRONS (SPACE @ 300mm C.T.S) REFER TO STD YSD13 FOR FURTHER DETAILS.
3. THE FLOOR OF THE PIT SHALL BE FORMED UP TO AT LEAST THE SPRINGING LINE.
4. CONCRETE TO BE VIBRATED IN PITS TO ENGINEER SATISFACTION.
5. CONCRETE TO BE POURED INTO PITS DIRECTLY OUT OF SUPPLY VEHICLES.
6. BEDDING MATERIAL SHALL BE 100mm COMPACTED THICKNESS OF CLASS 2 C.R.
7. F72 REINFORCEMENT IN WALLS OVER 2m DEEP.
8. GRATE PERPENDICULAR TO KERB AND CHANNEL.
9. ALL LINTELS TO BE CHARCOAL COLOUR.
10. ALL PIT SURROUNDS TO BE CHARCOAL COLOUR.
11. S.V.C. P/L PRODUCT CODE FOR THE Ci&D HEAVY WEIGHT COVER IS MH69H OR EQUIVALENT

Yarra Standard: YSD15 Drawing Title:

SIDE ENTRY PIT WITH HEAVY DUTY
COVER DETAILS

Scale at A4 N.T.S
Updated 29/11/07

