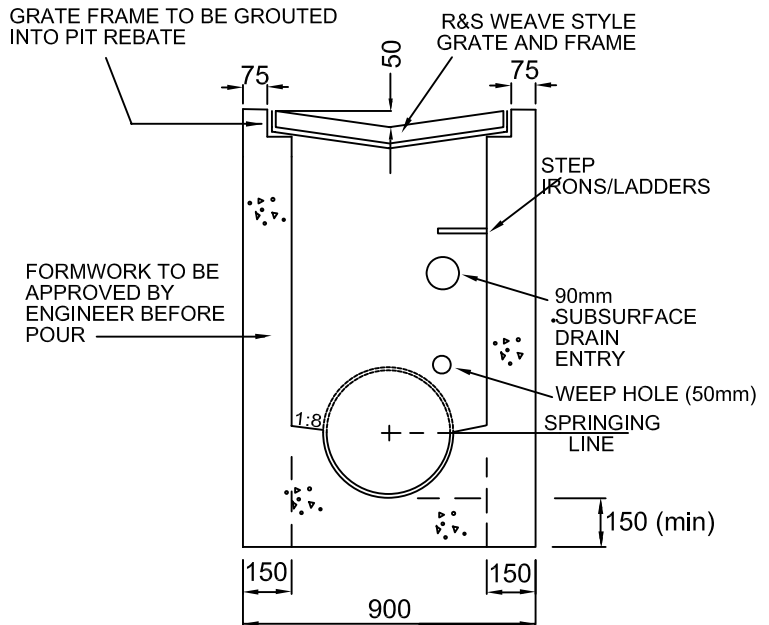
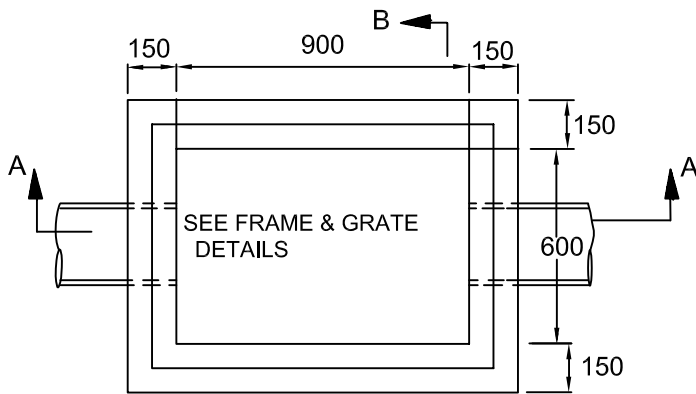


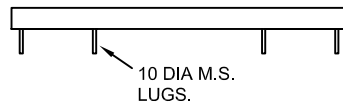
SECTION A-A



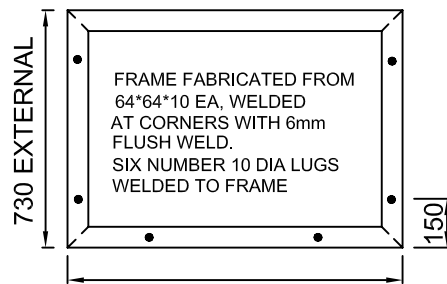
SECTION B-B



SEE FRAME & GRATE DETAILS



10 DIA M.S. LUGS.

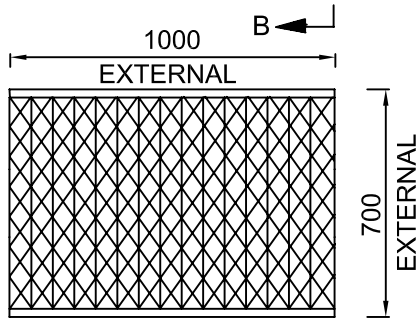


GRATING FRAME

CLASS "D" LOAD RATING GRATE

MATERIAL

- * Straight bars 50*12 bars Qty 17
- * Weave bars 40*10 bars Qty 16
- * End bars 50*25 bars Qty 2



WEAVE STYLE GRATE

GENERAL NOTES

1. ALL CONCRETE SHALL BE F'c 25Mpa AT 28 DAYS.
2. PITS DEEPER THAN 750mm SHALL BE FITTED WITH GALVANIZED STEP IRONS (SPACE @ 300mm C.T.S) REFER TO STD YSD13 FOR FURTHER DETAILS.
3. THE FLOOR OF THE PIT SHALL BE FORMED UP TO AT LEAST THE SPRINGING LINE.
4. CONCRETE TO BE VIBRATED IN PITS TO ENGINEER SATISFACTION.
5. CONCRETE TO BE POURED INTO PITS DIRECTLY OUT OF SUPPLY VEHICLES.
6. BEDDING MATERIAL SHALL BE 100mm COMPACTED THICKNESS OF CLASS 2 C.R.
7. F72 REINFORCEMENT IN WALLS OVER 2m DEEP.
8. GRATE PERPENDICULAR TO KERB AND CHANNEL.
9. ALL LINTELS TO BE CHARCOAL COLOUR.
10. ALL PIT SURROUNDS TO BE CHARCOAL COLOUR.

Yarra Standard: YSD18
Drawing Title:

"V" SHAPED GRATE FOR PITS IN OPEN INVERTS

Scale at A4 N.T.S
Updated 29/11/07

