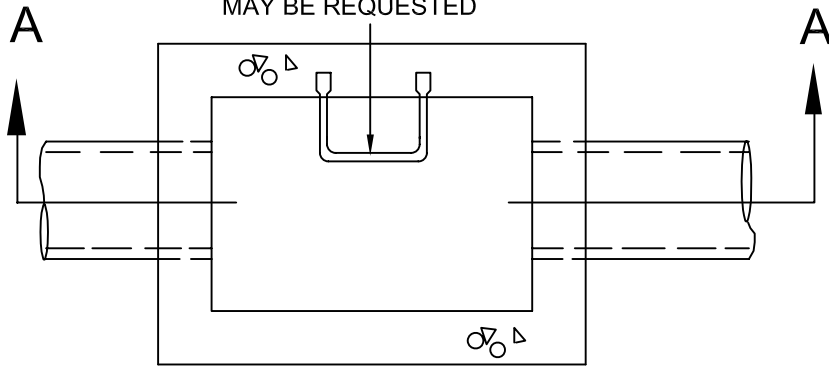
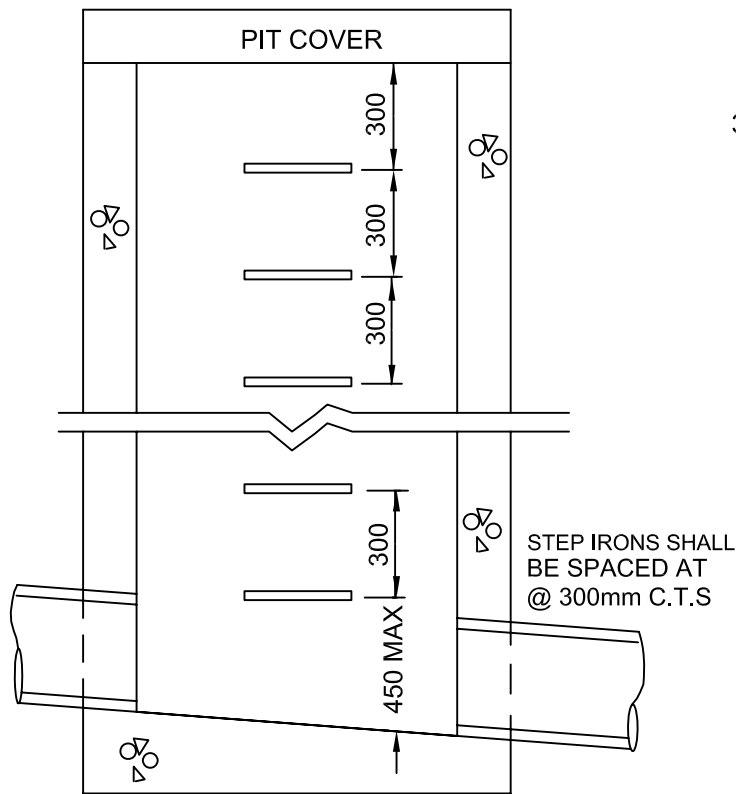


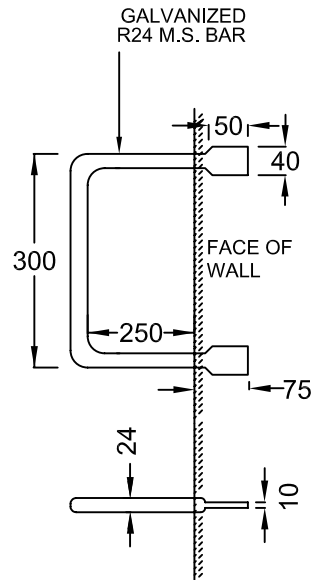
ENGINEER TO DECIDE WALL LOCATION FOR STEP IRONS.
A "STAGGERED" FORMATION MAY BE REQUESTED



PLAN



SECTION A-A



STEP IRON
DETAIL

GENERAL NOTES

1. MATERIALS FOR LADDERS & STEP IRONS SHALL BE STRUCTURAL GRADE 250 TO AS3679.1 OR APPROVED EQUIVALENT.
2. ALL WELDING SHALL CONFORM TO AS1627 AND GALVANIZED IN ACCORDANCE WITH THE REQUIREMENTS OF AS 4680 AS 4791 OR AS 4792 AS APPROPRIATE.
3. ALL STEEL COMPONENTS TO BE HOT DIPPED GALVANISED.
4. ALL SHARP EDGES SHALL BE ROUNDED BEFORE GALVANISING.
5. LADDERS & STEP IRONS SHALL BE FREE FROM DEFECTS AND PROJECTIONS LIABLE TO CAUSE INJURE TO HANDS, WITH MINIMUM DISTORTIONS.
6. ALL OTHER STEEL COMPONENTS - NUTS WASHERS ETC, TO BE GALVANISED.
7. PITS DEEPER THAN 750mm AND LESS THAN 2400mm SHALL BE FITTED WITH STEP IRONS.
8. PITS DEEPER THAN 2400mm SHALL BE FITTED WITH LADDER.

Yarra Standard: YSD20
Drawing Title:

STEP IRON DETAILS FOR PITS

Scale at A4 N.T.S
Updated 29/11/07

