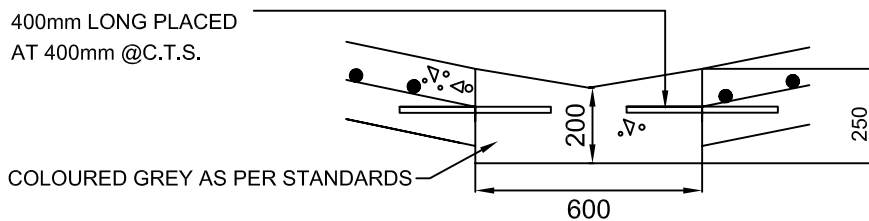


Y16 DEFORMED BARS  
400mm LONG PLACED  
AT 400mm @C.T.S.



**DETAIL A**

**GENERAL NOTES:**

1. THE 4% CEMENT TREATED C.R SHALL BE LAID WITHIN 15 MINUTES UPON ARRIVAL TO SITE. IT SHALL BE 4% ABOVE OPTIMUM MOISTURE CONTENT.
2. SUBGRADE TO BE GRADED AND ROLLED TO ENGINEERS SATISFACTION PRIOR LAYING THE STABILIZED LAYER.
3. EXPANSION JOINTS ARE REQUIRED AROUND POLES, MANHOLES AND OTHER SERVICE AUTHORITY FIXTURES.
4. TRANSVERSE JOINTS, CONSTRUCTION JOINTS, SAWCUT JOINTS, LONGITUDINAL JOINTS AND ISOLATION JOINTS TO BE CONSTRUCTED AS PER STANDARD DETAIL.
5. ENGINEER TO SPECIFY SPACINGS FOR JOINTS SPECIFIED IN NOTE 4(ABOVE).
6. CHAIRS TO BE USED TO SUPPORT F92 MESH
7. A ROUGH BROOMED FINISH IS REQUIRED TO THE ENGINEERS REQUIREMENTS.
8. MINIMUM LONGITUDINAL GRADE OF R.O.W. TO BE 0.3%
9. CHANNEL TO BE CONSTRUCTED SEPERATELY TO 200mm CONCRETE PAVEMENT. PAVEMENT TO BE CONNECTED TO CHANNEL VIA DEFORMED BARS AS SPECIFIED.

**Yarra Standard: YSD47**  
**Drawing Title:**

CONCRETE RIGHT OF WAY

Scale at A4 N.T.S  
Updated 27/11/07

