



Moving California Forward California's High-Speed Train System

"Economic power is how fast you move people and goods around the state."

Governor Arnold Schwarzenegger,
remarks to the Silicon Valley Manufacturing Group,
January 15, 2008



SIMULATION ARTWORK: N3CD

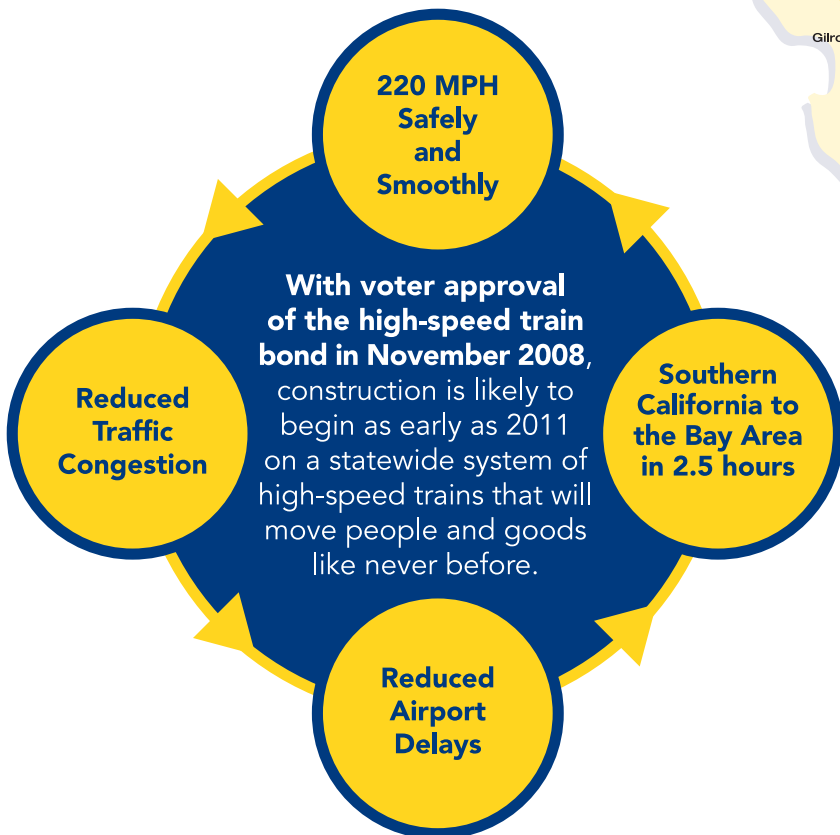
Approximately 800 miles long, the high-speed train network will provide Californians with predictable, safe, environmentally-friendly and competitive region-to-region transportation options.



LEGEND

- HST Preferred Alignments
- Proposed High-Speed Commuter Rail / HST Overlay
- Stations
- Potential Station

Map based on 2005 Statewide Programmatic EIR/S preferred route, and staff recommendation to Authority Board December 19, 2007.



Fly California Without Ever Leaving the Ground

Governor Schwarzenegger says high-speed trains will bring:
“improvements to our air quality, reductions in greenhouse gas emissions, congestion relief on our highways and greater mobility.”

— Fresno Bee, May 4, 2007

The Problems:

- **Congestion and Increasing Population**
California’s population will grow to 50 million people in 20 years. Already, California has three of the top five most congested urban areas in the United States. (Los Angeles, Bay Area, San Diego)
- **Automobile Traffic**
Congestion costs Californians approximately \$20 billion per year in wasted fuel and lost time, and congestion is increasing by an average of 10% per year.
- **Overcrowded Airports**
Over the next 20 years, the Los Angeles, San Diego and San Francisco airports are predicting “unacceptable delays” and will reach capacity. These costly delays will result in demand for 90 new gates and five new runways to serve trips between California’s major metropolitan areas—with virtually no room to accommodate future expansion.

The Solution: High-Speed Trains

- California’s high-speed train system **will cost two-to-three times less** than expanding freeways and airports to meet equal passenger demand.
- The system **will connect California’s major cities**, traveling at speeds up to 220 mph.
- **High-speed trains have a proven track record of safety.** Operating in Japan for over 40 years and in Europe for 25 years, high-speed trains have a proven record as the safest and most reliable form of transportation. High-speed train systems currently operate and are expanding in Japan, Korea, France, Germany, Spain, Italy, England, Belgium, Taiwan, the Netherlands and China.

Examples of High-Speed Train Travel Times

Travel Route	Travel Time hours : minutes
San Francisco to Los Angeles	2:38
San Francisco to San Diego	3:56
Los Angeles (Union Station) to San Diego	1:18
Bakersfield to Los Angeles	:54
Riverside to Palmdale	:59
Sacramento to Anaheim	2:36
Fresno to San Jose	:51
San Jose to Sacramento	1:24
San Jose to Merced	:45
Ontario to San Francisco	3:02
San Diego to Sacramento	3:35
Bakersfield to Modesto	1:02

“...California would have to build nearly 3,000 miles of new freeway plus five airport runways and 90 departure gates in the next two decades... The price tag: \$82 billion, and such levels of construction are barely possible in the real world.”

Oakland Tribune, January 28, 2004



CALIFORNIA HIGH-SPEED RAIL AUTHORITY
 925 L Street, Suite 1425, Sacramento, CA 95814
www.cahighspeedrail.ca.gov